

Listen to your soul and

SPEAK UP

You have something
worth hearing...

and, you can make a difference.



**COLDWELL
BANKER**

PREMIER

2016 S. Big Bend, St. Louis MO 63117



Marti Frumhoff
Coldwell Banker Premier
314-368-6373 cell
314-647-0001 x146 office

May/June 2002

Changing Woman: She Who Rejuvenates Herself Time and Again



GASH/VOIGT DANCE THEATRE

Banking worth a standing ovation.



When the lights dim and the curtain rises, the efforts and teamwork of talented individuals come together. That same philosophy holds true at Union Planters, where the efforts of many are brought together for your total satisfaction. For the location nearest you, call (314) 615-2300, or visit us online at www.unionplanters.com.

**UNION
PLANTERS
BANK**

www.unionplanters.com © Copyright 2002 Union Planters Bank. Member FDIC. 02/2249

GASH/VOIGT Dance Theatre
Presents

Changing Woman: She Who Rejuvenates Herself Time and Again

Friday, May 24 at 8 p.m.
Saturday, May 25 at 8 p.m.
Sunday, May 26 at 2:30 p.m.
Friday, May 31 at 8 p.m.
Saturday, June 1 at 8 p.m.
Sunday, June 2 at 2:30 p.m.

Susan Gash • Dawn Karlovsky
Mary Ann Rund • Beckah Voigt
&

CHARIS – The St. Louis Women's Chorus
Merry Keller – Artistic Director, Charis

Susan Gash and Beckah Voigt
Choreography
Co-Artistic Directors

Moira Smiley
Composer/Recorded Vocalist

Michael Eastman
Light Shadows Design

Janet Gwi-Yeun Park
Costume Design

Frieda Speropolous
Mask Design and Creation

Bryan Schulte
Lighting Design
Technical Director

Scott Giffen
Executive Director

Sonja Sanae Furiya
Company Manager

Co-Sponsored by Missouri Historical Society

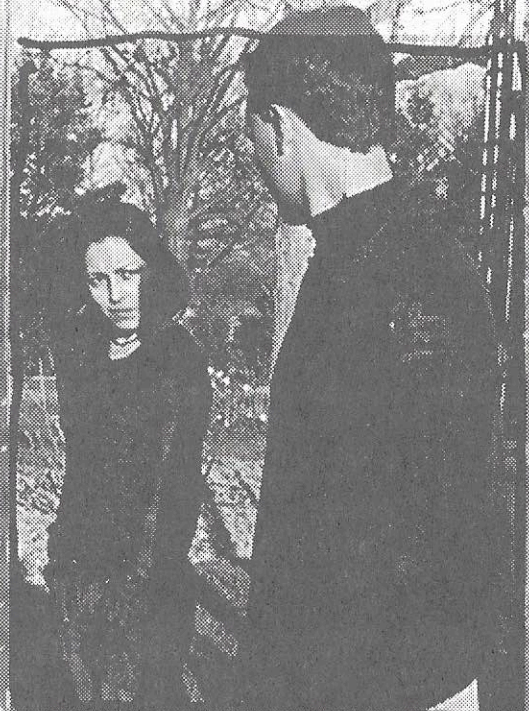
Special thanks to Mary Ann Rund, Dawn Karlovsky, Sonja Sanae Furiya, Jaclyn Brandt and Janet Gwi Park for their creative contributions to the choreographic process.

GASH/VOIGT Dance Theatre would like to give special thanks to Missouri Historical Society for co-sponsoring Changing Woman.

Financial assistance for Changing Woman has been provided by:
Arts & Education Council, Emerson, Enterprise Rent-A-Car, Harris Foundation, Maritz Inc., Mid-America Arts Alliance, Missouri Arts Council, a state agency, Regional Arts Commission of St. Louis & Whitaker Foundation



www.skifo.com



Apparel for the ever changing woman and man

SKIF INTERNATIONAL

2008 Marconi Avenue

St. Louis, MO 63110

Shop on line or email for an appointment
fa@skifo.com

Changing Woman:

She Who Rejuvenates Herself Time and Again

*"She moves around the circle of life and spirit as do the quarters of the day,
the seasons of the year, and the phases of our lives".*

Sacred Wisdom: The Circle of the Spirit by Peter Gold

Prologue

Charis - The St. Louis Women's Chorus

Accompanist: Matthew Chapman

There is a Season

By Janey Nance Hall

*Kore Evohe -
A Hymn to the Wheel of the Year*

by John Schrag, based on a chant

by Sabina C. Becker

Sky Dances

Words by Jimmy Durnam,

Music by Roy Brown

Arranged by Jennifer Stasack

Blow, Blow, Thou Winter Wind

Words by William Shakespeare,

Music by Emma Lou Diemer

Pause

I. Winter

The Dark Of Night

II. Spring

The Dawn Of Our Day

Intermission (15 minutes)

III. Summer

Life At Its Fullest

IV. Fall

The Autumn Of Our Year

Post-Performance Discussion

You are welcome to stay for a discussion with the artists.

Premiere Performances



2002-2003 Concert Season:

All performances are at 8:00 p.m.

October 21, 2002

Artemis String Quartet

Ethical Society

Widely regarded as the premier quartet of the new generation in Europe, these captivating musicians from Berlin have enjoyed a meteoric rise. Winners of the 1996 Munich and 1997 Borciani Competitions.

October 27, 2002

Opera Theatre-St. Louis: La Bohème

JC Penney-UMSL

Beginning their national tour with our series, Opera Theatre-St. Louis presents Puccini's beloved La Bohème at the UM-St. Louis campus.

November 11, 2002

Trio Apollon: Viola, Clarinet, Piano

Ethical Society

Warm instrumentation combined with the comfortable, engaging personalities of the musicians make this evening an experience to savor. Trio Apollon presents delicious, unusual repertoire, expertly played.

January 13, 2003

Trio Fedele: Flute, Cello, Piano

Sheldon

A charismatic artist, flutist David Fedele and his trio of exceptional artists perform dramatic repertoire ranging from Haydn to Prokofiev to Crumb. Their appealing stage presence is an additional delight.

January 27, 2003

Clancy Newman, Cello

Ethical Society

Winner of the 2000 Naumburg Competition, Australian Clancy Newman lights up the stage with his winning personality and exceptional technique. Mr. Newman's is decidedly a career to watch!

February 10, 2003

Rosario Andino, Piano

Sheldon

A particular favorite of the Latino community, Cuban-born Rosario Andino returns to the Sheldon for an encore performance on this series. Her program, "Appassionata!" is a perfect fit with Valentines Day.

March 3, 2003

Alon Goldstein, Piano

Ethical Society

Having recently triumphed as a soloist with the St. Louis Symphony Orchestra, Mr. Goldstein returns for a solo recital. His expression and suavity of tone are indescribably beautiful. He is a consummate artist.

March 17, 2002

NEXUS Percussion Ensemble

Sheldon

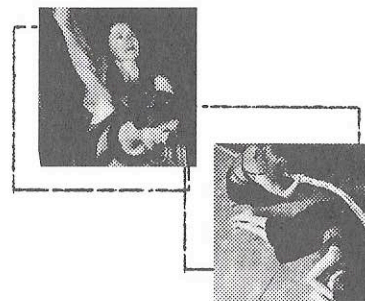
Acclaimed throughout the world, NEXUS's incomparable virtuosity and humor have led to appearances with international festivals, nearly a hundred symphony orchestras and fifteen recordings. Dazzling!

April 7, 2003

Vermeer String Quartet with Arianna String Quartet

Sheldon

The world-renowned Vermeer returns to St. Louis to enrich us with more memorable music, including a very rare treat...combining forces with UM-St. Louis's Arianna Quartet to perform Mendelssohn's Octet.



Choreographer's notes

Changing Woman is the second work of a triptych exploring the rich symbolism and community of native cultures. Following Sacred Ground, this new work is inspired by the Navajo Goddess whose life essence moves through the four seasons of a woman's life.

We begin the dance in the season of Winter where we find "Sage Woman". She is definitive in her nature and wise in her choices. Spring bursts through with adolescence, carrying both abandoned joy and peer rivalry. Summer takes us into a place of fullness and celebrates the richness of life. Fall brings us into a time of reflection, a time to deepen our connections with ourselves and others.

Throughout the dance a "snake" appears and moves through the seasons representing the power and mystery of the feminine, continually changing and shedding skin.

Changing Woman is our second collaboration with composer, Moira Smiley, who conceived the work with us. We are extremely appreciative of Moira and are very grateful to Merry Keller, Charis, and Micheal Eastman who joined us in this magical journey to celebrate the many faces and facets of being a woman.

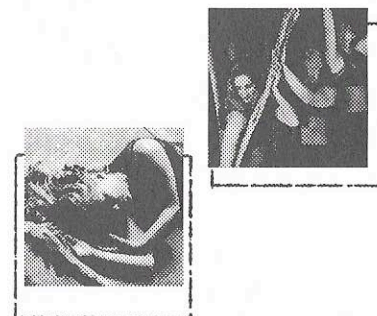
"Land Rites", set to premiere in May of 2003, completes the triptych.

Enjoy the program,
Susan Gash and Beckah Voigt
May 2002

Composer's Notes

The music for Changing Woman began with the idea of marking four parts, four seasons, four ages in our lives. This idea, and our decision to collaborate with the singers of Charis provided a very open and rich framework for the music to grow from. I was also inspired to write for the masked voice when I witnessed Hopi Kachina dancing and singing last spring in Hopi Land. The incredible spatial contrast of the hushed, intimate sound of many masked voices to the wide-open landscape thrilled me. Echoing, masking, whispering and droning are all ways to explore our external and internal landscape with sound, and all of these elements went into the composition of the choral pieces and the soundscapes that were created for this piece. My musical influences are very broad - both geographically and historically. It was fun to think of the music/sounds of places and periods that epitomized that particular season in mood and color, and move from there.

Moira Smiley



For information call (314) 516-5818. www.umsi.edu/~premiere



Don't Miss Out on Metro Theater Company's Fun-Filled Summer Program

For Young People Ages 7 - 11 Years Old

Three weeks of creative discovery at the Missouri History Museum

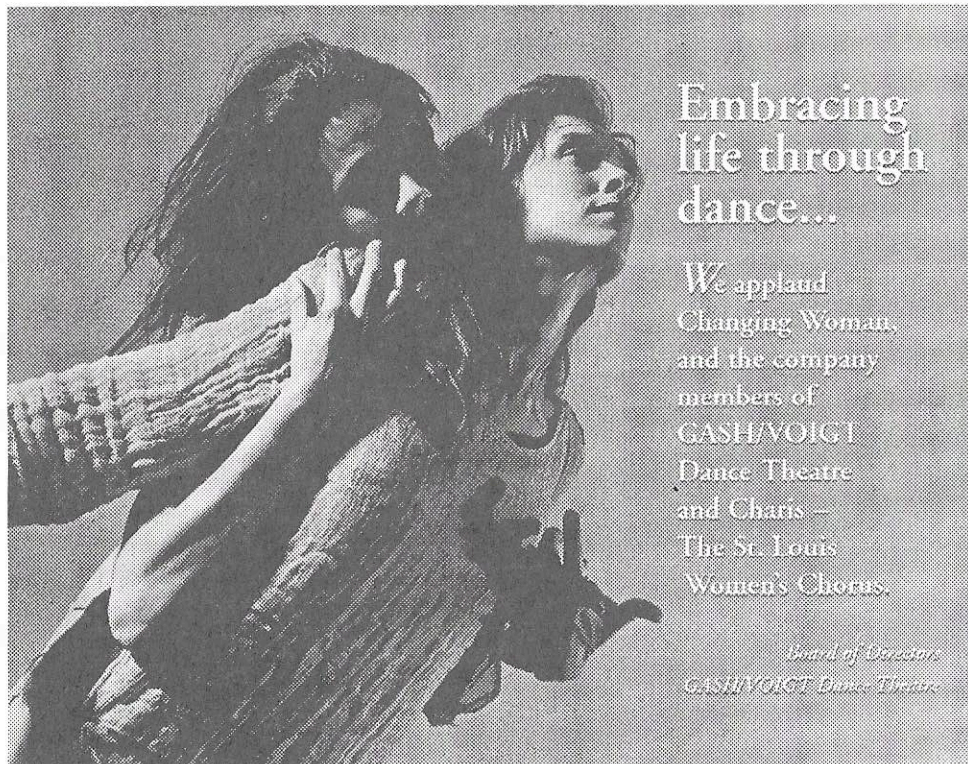
♦ Acting ♦ Music ♦ Improvisation
♦ Mask-Making ♦ Scene Work ♦ Puppetry ♦ Movement

June 17 - July 3, 2002
10:00 a.m. - 12:00 p.m. daily
Tuition: \$195

For Information Contact:
Joni Doyle, Education Director
314/997-6777

Register Now !! Enrollment limited to just 30 children.

www.metrotheatercompany.org



Embracing
life through
dance...

We applaud
Changing Woman,
and the company
members of
GASH/VOIGT
Dance Theatre
and Charis -
The St. Louis
Women's Chorus.

Board of Directors
GASH/VOIGT Dance Theatre

Performers

GVDT COMPANY DANCERS

Susan Gash, Dawn Karlovsky, Mary Ann Rund, Beckah Voigt

CHARIS - THE ST. LOUIS WOMEN'S CHOIR

ARTISTIC DIRECTOR, Merry Keller | ACCOMPANIST, Matthew Chapman

ARTISTIC SIGN LANGUAGE INTERPRETER, Glenace Humphrey

MOVEMENT CHOIR - Jaclyn Brandt, Sonja Sanae Furiya, Susan McIntosh, Jane V. Clark, KKH, Susan Levin, Sharon Spurlock | FIRST SOPRANOS - Wendy Bruner, Dayna F. Deck, Lesley Wilson | SECOND SOPRANOS - Sandra M. English, Cindy Fedders, Penny Frame, Marti Frumhoff, Loretta Haggard, Jeanne Sabbert Smith

FIRST ALTOS - Karen Clodfelter, Katherine Kinnamon, Kelly Mitchell, Nadine Varner

SECOND ALTOS - Deborah A. Lawson, Lesley Proud, Chataunya Rawles,

Debbie Stover, Mia Ulmer

Musicians (PRE-RECORDED)

VOICE, PERCUSSION, KEYBOARDS - Moira Smiley | VOICE, PERCUSSION - Dave Weber

VIOLIN, SAZ, KAMANCHE - Megan Weeder | VOICE - Stephanie Heidemann

CELLO - Mia Dalglish | KAMALE NGONI - Cullen Strawn

SPOKEN VOICE - Julianna Burrell

Artistic Collaborators

COMPOSER, Moira Smiley | LIGHT SHADOW DESIGN, Michael Eastman | LIGHTING

DESIGN, Bryan Schulte | COSTUME DESIGN, Janet Gwi Park COSTUME INTERN, Bethany

Taylor | MASK DESIGN AND CREATION, Frieda Speropoulos

RECORDING ENGINEER, David Weber, Airtime Studios, Bloomington, IN, Feb-Mar, 2002.

Production Staff

TECHNICAL DIRECTOR, Bryan Schulte | PRODUCTION MANAGER - S. Sanae Furiya

STAGE MANAGER - Natasha Baumgardner | HOUSE MANAGER - Erin Schulte

|LIGHTBOARD OPERATOR - Jason Jones | RUNNING CREW - Ernesto Monza, Brock

Hill, Chris Weaver, Tom Quintas | VIDEOGRAPHER - Matthew Pitzer

ASSISTANT VIDEOGRAPHER - Chad Eivins

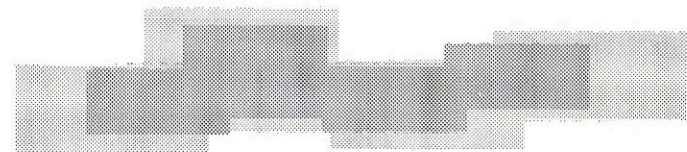
GVDT Administrative Staff

CO-ARTISTIC DIRECTORS - Susan Gash & Beckah Voigt

EXECUTIVE DIRECTOR - Scott D. Giffen | COMPANY MANAGER - Sonja Sanae Furiya

PR/MARKETING INTERN - Dana Bisignani | EDUCATION ASSOCIATE - Jaclyn Brandt

GRAPHIC DESIGN - Eric Koehn



HISTORYONICS THEATRE COMPANY

THEATRE IN RESIDENCE FOR THE MISSOURI HISTORICAL SOCIETY

TWENTIETH ANNIVERSARY SEASON



SEASON 20 · 2002-2003

BULLY PULPIT: *Theodore Roosevelt*

September 13- 29 – 2002

AIR WAVES: *Early Days of Radio & T.V.*

November 1-17 - 2002

CONTROLLED COOL: *The Arthur Ashe Story*

February 7- 23 - 2003

ALL A WOMAN NEEDS: *Virginia Woolf*

March 28-April 13 - 2003

Call (314) 361-5858 for tickets & information.

Corporate seasonings

(314) 993-7100 • Fax (314) 993-7030

Best Choice in Business Catering
Box Lunches • Continental Breakfast
Hot & Cold Buffets

Call us for your Business Catering needs!

Sally Fitzhugh & Lesley Proud
Owners & Managers

GASH/VOIGT Dance Theatre

GASH/VOIGT Dance Theatre (GVDT), founded in 1985, is one of the few all women's contemporary dance theatre companies in the United States. GVDT's highly acclaimed all-original performance works include collaborations with internationally and nationally renowned visual artists, composers, directors, writers, and videographers. Under the artistic direction of Susan Gash and Beckah Voigt, the company develops their work around social and political issues as viewed through the human condition, particularly about women.

GVDT is one of St. Louis arts and culture ambassadors. The company's international touring has taken them to Western and Eastern Europe, China, Taiwan, Russia, and Central America. The company hosted and presented two foreign dance companies in their United States debuts: Samara Square Theatre from Samara, Russia, and Central European Dance Theatre of Budapest, Hungary. GVDT was the only United States dance theatre company represented at the International Women's Conference in China in 1995. In 1996, under the auspices of the International Arts Programming Network, the company toured to Costa Rica and subsequently collaborated with a Costa Rican writer/director on their 1998 production of *ESPERANZA*. In 1998 GASH/VOIGT Dance Theatre was awarded a two-year international grant funded by the U.S. Department of State. The project *WEAVING THE WORLD*

THROUGH THE EYES OF WOMEN brought GVDT together with Roes Dance Theatre of Athens, Greece and Dance Factory of Istanbul, Turkey.

GVDT has strongly impacted arts-in-education through hundreds of residencies and in-school programs. Numerous outreach projects with St. Louis and statewide communities include women's service organizations, special and minority populations, area universities, and arts groups. A unique GVDT program, *DANCE & DIALOGUE: AWAKENING THE WOMAN WITHIN*, developed with leaders of the Empowering Young Women's Conference at UMSL, is offered several times a year as a wellness retreat for adult women and as workshops for adolescent young women. Young Audiences of St. Louis list GVDT on their educational rosters. They regionally tour as a part of the Missouri Arts Council's Missouri Touring Program and are on the ten-state Heartland Arts Fund roster. They are also founding members of the St. Louis Mid-Size Arts Cooperative, an arts advocacy group, and City Arts, a not-for-profit arts organization dedicated to creating a performance and visual arts facility in St. Louis.

GVDT is unique in that two women shape its artistic direction. Susan Gash and Beckah Voigt are celebrating over a decade of choreographic collaboration. The company's work reflects this shared vision, both global and humanistic in its scope. Through its multidiscipline collaborations, performances, educational outreach, and international touring, GVDT has brought acclaim to itself, the city of St. Louis and the State of Missouri.

If you are interested in becoming one of our treasured VOLUNTEERS, or for more information, call the GVDT office, (314) 721-0052, email us: info@gvdt.com, or visit our website at www.gvdt.com.

SUSAN GASH (Co-Artistic Director) is a choreographer, performer and teacher. She received her undergraduate degree in dance at Washington University in St. Louis, Missouri and is a Certified Movement Analyst from the Laban Institute of Movement Studies in New York. She is currently an adjunct faculty member of the Fine and Performing Arts Department at St. Louis University and on the teaching staff of the Missouri Fine Arts Academy in Springfield.

BECKAH VOIGT (Co-Artistic Director) began collaborating with Susan Gash in 1988. She is a choreographer, performer and teacher. Beckah received her MA from the University of Colorado and is an associate professor of dance at Webster University in St. Louis. Her choreography is best described as theatre dance, as she draws on the use of props, voice and the motivation of human interactions to create her pieces.

MARY ANN RUND (Dancer) joined GVDT in 1998. She teaches modern dance, related dance arts and yoga at Washington University, Mary Institute & Country Day School and Center of Contemporary Arts. Her work, presented regularly at SIUE and Washington University, has also been seen across the United States. Mary Ann was a member of Suzanne Grace's BURNING FEET DANCE CO. for five years. Her education includes Bachelor degrees in Dance and Biology from SIUE, and a master of Fine Arts from Florida State University.

DAWN KARLOVSKY (Dancer) joined GVDT in 2001. She teaches at Washington University in St. Louis as an adjunct faculty member in the Performing Arts Department and also teaches at the Center for Contemporary Arts. Dawn has an MFA from the University of Utah and a BA degree from Northern Illinois University. She is a former member of California Contemporary Dancers in San Francisco and of Afterimages Repertory

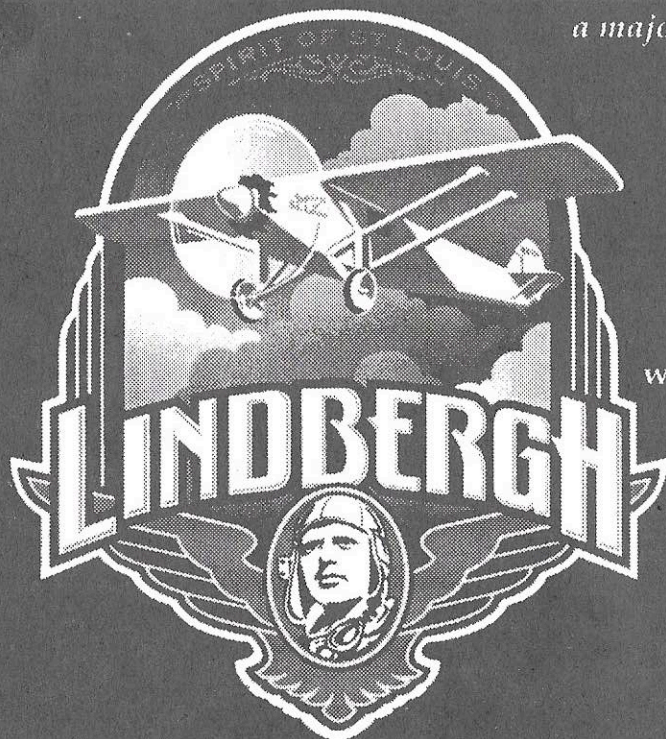
Dance Co. in Louisville, KY. Dawn has choreographed works for several modern companies throughout the U.S. and has performed locally with Atrek Contemporary Dance Co. in several dance improvisation venues. Dawn is in the process of training to become a teacher of the Alexander Technique.

MOIRA SMILEY (Composer/Recorded Vocalist) has worked internationally with leading performers of early, traditional and contemporary music - as vocalist, composer and teacher. She graduated from Indiana University's School of Music with a degree in Early Music Vocal Performance (BM '98). Her performing and recording includes work with: Paul Hillier's Theatre of Voices; the pioneering American group, Northern Harmony; The New World Symphony; Fretwork Consort of Viols; and the KITKA Vocal Ensemble. She has written music for contemporary dance theatre companies in London, and Los Angeles and recorded for BBC television. Moira frequently premieres new music and

sings traditional music as a soloist. VIDA, the four-woman a cappella group she founded in 1995, toured internationally and recorded two CDs traditional and original song (praised in Billboard and Dirty Linen magazines). VIDA was featured in Lincoln Center's "Great Performances" Series in 2000.

MICHAEL EASTMAN (Light Shadow Design) Based in Saint Louis, Michael Eastman has been active as a fine art and commercial photographer for the past thirty years; Mr. Eastman has been exhibited and published extensively. His collections include: Metropolitan Museum of Art, Art Institute of Chicago, Los Angeles Museum of Art and San Francisco Museum of Art. In the fall of 2003, Knopf Publishing will release Mr. Eastman's debut book, entitled: HORSES.

JANET GWI-YEUN PARK, (Costume Designer) joined GVDT in 1994, appearing in the productions of UNHEARD VOICES, WITCHES, SANCTUARY, MIRA, AND ESPERANZA. Gwi also traveled with GVDT to Greece and



a major exhibition at the
**MISSOURI
HISTORY
MUSEUM**

Lindell and
DeBaliviere
in Forest Park
www.mohistory.org
314.746.4599

presented in
St. Louis by:

Boeing-McDonnell
Foundation

Edward Jones

Serving Our Community



Southampton

HEALTHCARE, INC.

2340 Hampton Ave.
St. Louis, MO 63139
(314) 647-2200



David J. Prelutsky, M.D.
Internal Medicine

Catherine Williamson, F.N.P.
Nurse Practitioner

Turkey as a dancer in 2000. This is her second year designing costumes for GVDT and she is very excited for the continued opportunity.

BRYAN SCHULTE (Lighting Design & Technical Director) received his BFA in Scenic and Lighting Design from University of Cincinnati-College Conservatory of Music. Recently moved from Los Angeles, Bryan is the Technical Director and Scenic Designer at the Art Loft Theatre in St. Louis. He also works as a freelance Stagehand and Carpenter.

FRIEDA SPEROPOULOS, (Mask Design and Creation) was born and raised in St. Louis. Frieda has a Masters Degree from Washington University. Following seven years of teaching high school art and physical education, Frieda taught at Harris-Stowe State College for twenty-six years as Assistant Professor of Education. In her art, she likes to work with materials that are found and recycled. A world traveler, Frieda incorporates ideas of her own culture as well as other cultures she has experienced into her work.

SCOTT GIFFEN (Executive Director) native Texan, musician, artist, actor, traveler, and business person, embarked on his career in Arts Administration as an undergraduate of Greenville College in Illinois. While actively involved in producing and performing in artistic productions, Scott achieved his Bachelor's degree in Business with an emphasis in Arts Management, Finance, and a minor in Music. In 1997, he laid the grassroots of a nonprofit organization, Canvas Arts Production Inc., which specialized in promoting young artists and their work, and became the Finance Director for the self-supporting Agape Music Festival. Scott has been an Association of Fundraising Professionals member since 1999 and serves on their board of directors for the St. Louis Chapter as Government Relations committee chair. In 2000, Scott began his masters in Performing Arts Administration at New York University through their study abroad program. For the

past three years, Scott has enjoyed supporting and promoting GVDT's artistic programs Dance Theatre in St. Louis. He believes in their international mission and empowering spirit, and seeks to bring the organization to a new level of efficient quality and professionalism.

SONJA SANAE FURIYA (Company Manager) started her dance training at the age of eight at the Martha Graham School of Dance in NYC. She earned her BA in Dance at Washington University, St. Louis. Sanae studied Labanotation at the Dance Notation Bureau in New York and currently teaches Introduction to Notation through University College, Washington University. She lived in England for 12 years and gained administrative experience working for a small company offering theater workshops, the Education Department of the Theatre Royal, Plymouth, Devon, UK and the British Society for the History of Mathematics. Sanae brings admin-

istrative and organizational skills coupled with her extensive knowledge of dance to GASH/VOIGT Dance Theatre and also serves as Treasurer of the board of directors for St. Louis' Circus Day Foundation. Sanae is thrilled to have been the connecting link between Charis and GVDT and to be performing in Changing Woman.

JACLYN BRANDT (Education Associate) graduated from Washington University with a BA in Dance and Theater Design. Jaclyn performs and teaches in the St. Louis area, most recently at Sheldon Concert Hall's Notes from Home Series performances of FLYING FABLE and SLEEPWALKING. She sings with the City Voices Chorus and joined Charis for the performance of CHANGING WOMAN. As GVDT's Education Associate, Jaclyn led GVDT's school residencies at Holy Trinity and St. Margaret's Catholic Schools.

BRAVA BODYWEAR

"For Your Active Life"

DANCE APPAREL, SHOES & MUCH MORE
2204 S. BRENTWOOD BLVD. (314) 962-1000
1/2 mile south of the Galleria and Hwy. 40



SPRING CLEARANCE
50% OFF ON HUNDREDS OF ITEMS
CHILDRENS AND ADULTS

Hurry in for best selection!

We're growing this summer by moving to
2605 S. Brentwood-Join our mailing list!

yoga

healing touch

"thai yoga therapy™" bodywork

yoga for pregnancy

meditation



suzanne fischer
starfin / candle river yoga llc®

314.569.5744
starfin1@msn.com

nationally registered  kripalu certified

Dance St. Louis  **2002-2003**

Season of Dance

At the Fox Theatre

Georgian State Dance Company	October 4 - 5
Pilobolus	November 8 - 9
Hubbard Street Dance Chicago	February 14 - 15
Stuttgart Ballet - <i>Romeo and Juliet</i>	April 11 - 12

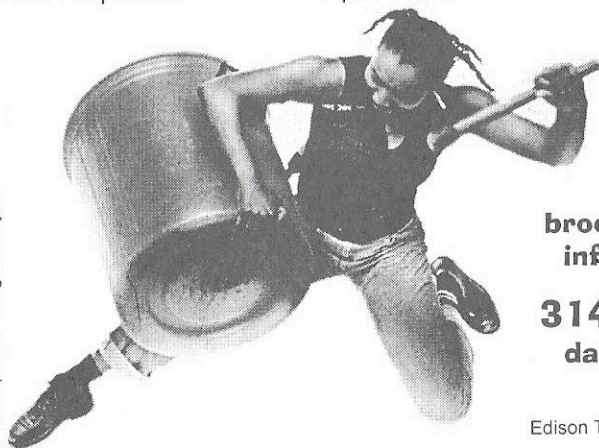
Special Events at the Fox Theatre

STOMP	January 24 - 25
Blast!	February 4-9
Swing!	May 30-June 1



At the Edison Theatre*

Limon Dance Company	October 11-13
Rhythm in Shoes & The Red Clay Ramblers	February 21-23
Ballet Hispanico	April 25-27



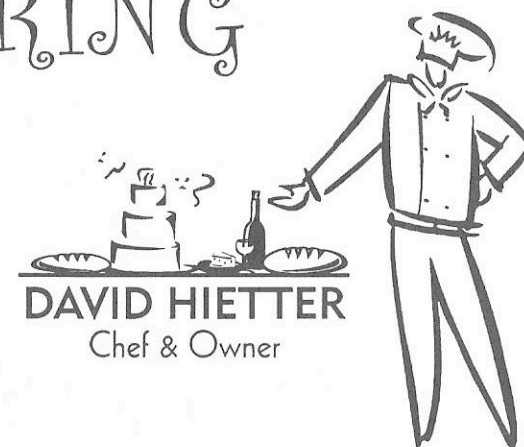
For a season
brochure or more
information, call

314.534.6622
dancestlouis.org

*Co-presented with the
Edison Theatre Ovations! Series

STOMP photo: Oleg Micheyev

"CREATIVE" CATERING



DAVID HIETTER
Chef & Owner

Phone or Fax
(314) 434-1050

Lunch and dinner
served daily

3131 S. Grand Blvd.
St. Louis, MO
314-773-3100

delicious
vietnamese and
vegetarian cuisine
in the heart of
Grand South Grand

Mekong Restaurant



OUTREACH

**Gifts,
Classes,
Camps,
and more...**

**In the Loop
6640 Delmar Blvd.**

314-725-1177



GALLERY



EDUCATION

Craft Alliance

GALLERY EDUCATION OUTREACH

www.craftalliance.org

CHARIS - The St. Louis Women's Choir

Charis is a lesbian chorus open to all women. Members differ in age, size, ethnic background, sexual orientation, and abilities, but share a goal to seek musical excellence, voice messages of social justice, and create a fun and supportive place for all women. The chorus was founded in January 1993 as a non-auditioned women's community chorus focusing on issues of importance to women and, specifically, to the lesbian community.

Since its founding, CHARIS has produced two or three major concerts each year in addition to performing in benefits for a variety of community organizations. In 1996, the chorus traveled with its founding co-directors, Cindy Sohn and Juliet Jackson, to Tampa, Florida for the Quadrennial GALA Festival of Gay and Lesbian Choruses. Merry Keller became the Artistic Director of CHARIS in 1999. CHARIS' past seasons include "Music She Wrote" - songs by and for women, "Heart of a Woman" - a concert of love songs, and "Rainbow World" - celebrating children. In June of 2001, CHARIS performed "Sing for the Cure" with the Gateway Men's Chorus. This 10-movement song cycle for eight-part chorus and full orchestra was commissioned by the Susan G. Komen Breast Cancer Foundation, premiered by the Dallas Women's Chorus and Turtle Creek Chorale in 2000, and

debuted in St. Louis under the direction of Merry Keller. In November 2001, St. Louis jazz favorite Denise Thimes joined the chorus for "CHARIS Sings the Blues" at the Grandel Theatre. CHARIS is delighted to collaborate with Gash/Voigt Dance Theatre in this original performance of "Changing Woman."

Merry E. Keller, (Artistic Director, CHARIS) brings a professional choral background and extensive performing experience to her work with CHARIS - the St. Louis Women's Chorus. With an undergraduate degree in vocal/choral music, and advanced studies in choral conducting and voice, Merry has been involved in performing, directing and teaching music for over twenty-five years. Merry's local performance experience includes The St. Louis Women's Chorale, Random Access, The St. Louis Chamber Chorus, several community-based groups, and solo performance in a variety of venues in the area.

With additional degrees in business and divinity, Merry is an ordained minister of the United Church of Christ. She has produced and hosted a community service program, "Steeple and People" for KMOV, Channel 4, was Chaplain of Evangelical Children's Home and was Director of Development at Care and Counseling. Merry continues her ministry as "Minister of Choral Music" at Parkway United Church of Christ in Creve Coeur. Merry lives in St. Louis with her partner, Debbie, and two sons, David and Mike.

SPECIAL THANKS FROM CHARIS TO:

Centenary United Methodist Church, Union Avenue Christian Church, Corporate Seasonings, Creative Catering, Gateway Men's Chorus and our Board of Directors.

For more information about Charis call 314-822-7578

email chariswomen@yahoo.com or visit our website at www.charischorus.org

Health and Dental Insurance

AT AFFORDABLE RATES
INDIVIDUAL • GROUP

Short Term or Standard Medical
Flexible Programs • Prescriptions
Choice of Doctors and Hospitals



Long Term Care • Annuities • Life
Medicare Supplements

Estate & Retirement Planning
Certified Elder Planning Specialist, CEPS



Provider of insurance services to
GASH/VOIGT Dance Theatre of St. Louis

Affordable Health Plans of
Missouri
(314) 576-3999

Upcoming Events

JUNE 2002 JUNE 12 PERFORMANCE Missouri Fine Arts Academy Springfield, MO	JUNE 2002 JUNE 22 BENEFIT PERFORMANCE Benefit for Cedarhurst Sculpture Park Mt. Vernon IL.	AUG. 2002 AUG. 31 APMD ART, POETRY, MUSIC, & DANCE A Day of Contemporary Art in the Park Faust Park, Chesterfield
SEP. 2002 SEP. 14 APMD ART, POETRY, MUSIC, & DANCE A Day of Contemporary Art in the Park Tower Grove Park, St. Louis	DEC. 2002 DEC. 13-15 DANCE & DIALOGUE RETREAT Retreat for Women Il Ritiro, Dittmer, MO	SPRING 2003 TRAVEL TO BRAZIL GVDT will be traveling to Brazil and taking companions Brazil, SA

For more information on these events,
call: (314) 721-0052, or email: info@gvdt.com

GVDT would like to extend
Special Thanks to:

Skif International	Lyn Magee
Emily Kim	Rachel Preiss
Pat & Michael Harris	Martie Genovese
Barney Bradshaw	Dennis Rau
Missouri Historical Society	St. Louis Community College
Merry Keller	at Forest Park
Russell Wycoff	St. Louis Arts Commandos
Peter Gold	Sven Carlson-
Kevin Martini-Fuller	carrier of the snake
Hot House Theatre	Trevor Carlson
Sun Smith-Foret	Peggy: Gene Del Printing
Alice Galt	Airtime Studios
Wendy Ballard	Tim Angelo
Katie Miller	Webster University
Karen: Duff's Restaurant	
Our Volunteer Ushers	

GVDT Board
of Directors

Kate Moore - PRESIDENT
Kit Jenkins - VICE-PRESIDENT
Liz Nahnsen - TREASURER
Deborah Miller - SECRETARY
Susan Gash
Laura Patton
Sandi Phillips
Everett Russell

GVDT Advisory
Board

Bob Brauch
Daniel E. Butler
Therese Cristiani
Michael Harris
Bryan W. Knicely
Svetlana Igoshkina O'Brien
Dawn Ottensmeier
Dennis Rau
Katie Stotler



Opera doesn't scare me.

I'm not exactly the type who watches sitcoms. I want the best out of life, and if that means doing something out of the ordinary, so much the better. I love raw fish and apple martinis – so why should I let a thing like opera scare me?

The music and acting at Opera Theatre are phenomenal – and you get the Saint Louis Symphony playing in the pit. Don't worry about languages – they sing everything in English.

With operas like **The Magic Flute**, **Lucia Di Lammermoor**, **Hamlet**, and the world premiere of **Loss of Eden**, the 2002 season is a great time to give opera a try. Call 314.961.0644 to find out more.

A festival of opera in English!
www.opera-stl.org

OPERA
THEATRE
OF SAINT
LOUIS

GASH/VOIGT Dance Theatre says THANK YOU!

July 1, 2001 through April 18, 2002

Founder (\$5,000 or more)

Regional Arts Commission of St Louis ♦, City of University City ♦, Deborah & Mark Miller ♦ *Daily Points of Light Award Recipient*, Connie & Craig Schnuck, Emerson, American Express ♦, The Enterprise Rent-A-Car Foundation, The Whitaker Foundation, Missouri Historical Society ♦, Missouri Arts Council, Full Circle Productions ♦

Ambassador (\$3,000 to \$4,999)

Beckah Voigt ♦ ♦ - *In Honor of Kit Jenkin's 50th Birthday & Katie Stotler*

Benefactor (\$1,500 to \$2,999)

Maritz Inc., Kit Jenkins & John Maxwell ♦ - *In Honor of Bob Brauch & Aya Kawasaki's Wedding*, Harris Foundation

Collaborator (\$1000 to \$1,499)

Robert N. Brauch ♦ - *In Honor of Susan Gash & Beckah Voigt*, Michael & Pat Harris ♦, Laura Patton, Tai Tran †

Sponsor (\$500 to \$999)

Kate Moore ♦ ♦ - *In Memory of Mary Louise Moore & In Honor of Bob Brauch & Aya Kawasaki's Wedding*, Webster University ♦ - *Sponsor of Peter Gold Workshop*, Mark & Beth Ann Taylor, Scott Giffen ♦ ♦ - *In Honor of GASH/VOIGT Dance Theatre's Board of Directors*, Susan Gash, Beckah Voigt, & Sanae Furiya, Susan Gash ♦ ♦ - *In Honor of Kit Jenkin's 50th Birthday*, Mallinckrodt, Inc. †, Sven Carlson ♦ - *In Memory of New York Fire Fighters*, Frank & Jane Ollendorff, Bill & Val Snyder, Bryan Knicely, Jeffrey Aeling, Marion Black, Mr. & Mrs. Andrew C. Taylor

Patron (\$150 to \$499)

Michael & Therese Cristiani, Katie Stotler ♦, Monsanto People Project Sponsor, Carol Colligan, Steve Adams, Sandi Phillips & Chris Lipinski - *In Honor of Bob Brauch & Aya Kawasaki's Wedding*, Dr. Brenda-Fay & Jeff Glik, Dr. Alice Bloch, Holekamp Foundation, Adobe Systems Incorporated ♦, Association of Fundraising Professionals, Doug & Anne Albrecht, John & Anita O'Connell, Nancy Ross, Susan Jenkins

& Robert Ginsburg, Cindy & Greg Dart, Jerry & Barbara McKenny, Michael & Marcia Lacour-Little, Danny Giffen, Lisa Eck & David Ripp ♦, Sherry Londe ♦ - *In Memory of Ellen Glazier*

Supporter (\$50 to \$149)

Jayne Schroeder, Anne Tomasson, Bill & Esther Gash, Debbie Stiefferman & David Burjoski, Debra & Michael Von Gerichten, Ernest & Mary Behnke, Stephanie & Bruce Clifton, Frieda Speropoulos, Kathy Corley, Alice Galt, Arthur B. Schweich, Doug & Carolyn Giffen ♦ - *In Honor of Scott Giffen*, Gail & William Gold, Gene Del Printing ♦, Jack & Joan Goldman, Kathy & Bob Becker ♦ - *In Honor of Mary Ann Rund*, Kent & Diana Chancellor, Linda Horsley ♦, Linda M. Slagell, Mary Ann Rund ♦, Maureen Rumping, Mekong, Inc., Rick & Carol Short, Sally B. Bliss, Schlafly's Beer ♦, S. Sanae Furiya ♦ ♦ - *In Honor of Kit Jenkin's 50th Birthday*, Caroline Heckman Liebman, Carolyn Anderson, Blueberry Hill, Cindy Curley, Dr. Bill Russell Lyn Magee, R. Martin Arthur, Liana Marek, Big Bend Center, Bob Franklin & Jeanne Morrel-Franklin, Carol North & Nicholas Kryah, David Wood, Jessica D. Hentoff ♦ - *In Honor of Maggie Manilla*, Laura Cohen ♦ - *In Honor of Shirley Cohen*, Lois & Bill Rund, Mae Gordon, Mary Jane Young, Pamela M. & Cal Nicholson, Thomas M. Fortel, Tim & Kitty Daly, Todd T. Frisch D.C., P.C., Walter N. Epstein

Friend (\$1 to \$49)

Puritan Springs Water ♦, Stuart Tsubota, Yvonne M. Logan, Elizabeth Nahnsen ♦ - *In Memory of Donna Fluck*, Anonymous (APMD Donation Basket), Janet Gwi Park, Kevin & Heather Swinigan, Louis J. Naeger, McGraw-Hill Companies †, Paul Donnell, Signe Lindquist ♦ - *In Honor of Susan Gash*, Barbara & John Finch, Charles Khan, Dennis Rau ♦ - *In Honor of Bob Brauch & Aya Kawasaki's Wedding*, Julie Wiegand & Tom Griesedieck, Karen Albin Edmonds, Ken Balk ♦ - *In Honor of My friend Sunny*, Lynn Hackethal, Margret A. O'Neill, Mark & Joan VanMatre, Rebecca Culpepper-Hoffman, Sarah Anne Patz & Howard S. Nathanson ♦ - *In Honor of Susan & Beckah*, Savneet K. Talwar, Debra Simpson, Lisa Geger, Sally Smith, Betty A. Salamun, John Ehlers

♦ In-kind Contribution (Partial or Whole)

† Matching Gift

♦ Tribute Gift

♦ Monthly Contribution Plan

For all your printing needs ◀ ◀ ◀ ◀ ◀

- ▶ Full color printing
- ▶ Quickprinting
- ▶ Digital color printing
- ▶ High-speed copying
- ▶ In-house pre-press
- ▶ Full Bindery

PRINTING BY
gene•del
INCORPORATED

9019 Manchester Brentwood, MO 63144 314-962-4750 314-962-6563 fax

JOAN M. BRACKMANN, M. A.
LICENSED PROFESSIONAL COUNSELOR
EMDR

INDIVIDUALS > COUPLES **PSYCHOTHERAPY**
NATIONALLY CERTIFIED PSYCHOLOGIST

tel 314.664.9766

3672B ARSENAL STREET, SAINT LOUIS, MISSOURI 63116

ANIMAL HEALTH & HEALING

CHRIS CROSLY, D. V. M.
and associates

2615 South Big Bend Blvd.
St. Louis, MO 63143

314-781-1738

Homeopathy
Acupuncture/TCM
Nutraceuticals
Bach flower remedies

Brandt's

Market & Cafe

Great food, great company, great music

6525 Delmar Blvd., University City, MO 63130
(314) 727-3663 www.brandtscafe.com

Face Your Future

*Facials, Microdermabrasion,
Body Treatments*

Dora Peters, Esthetician

Salon du Jour

(314)852-8588

10753 the Plaza at Sunset Hills

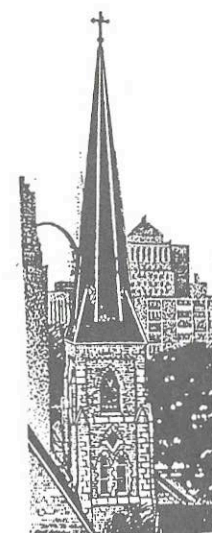
Centenary
United Methodist Church
55 Plaza Square
Saint Louis, MO 63103
314. 421. 3136

You are a stranger only once!

Gwen Trullinger, Senior Pastor

Looking for Spiritual Enrichment?
Santa Rosa Labyrinth is available 24/7
Located on the Pine Street Entrance!

+ Centenary Church supports the Reconciling Congregation Program +
www.centenarychurch.org



KINGSBURY ANIMAL HOSPITAL



Phone: 314-721-6251

Fax: 314-721-7513

Web Site:

<http://www.kah.com>

Hours by Appointment

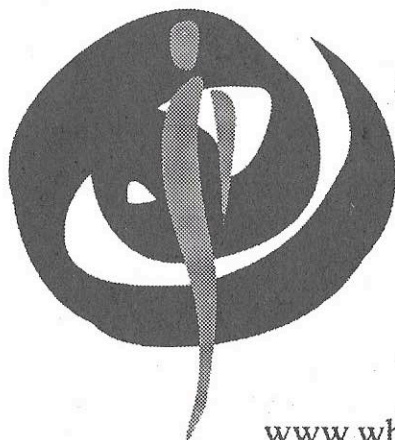
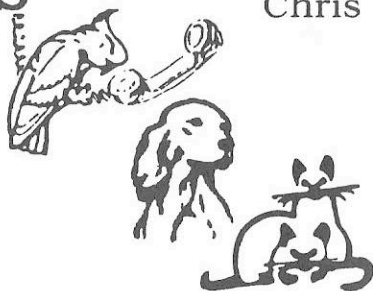
Stephen A. Brammeier, D.V.M.

PET CONNECTIONS



2212 S. Vandeventer
773-PETS

Lewis
Tom
Chris



Sven Carlson
Advanced Rolf Practitioner

Tel. 314.569.3312

Fax. 314.569.3394

svenc@att.net

www.wholistic.net/rolf/carlson.htm

PERSONAL AND BUSINESS LEGAL COUNSEL

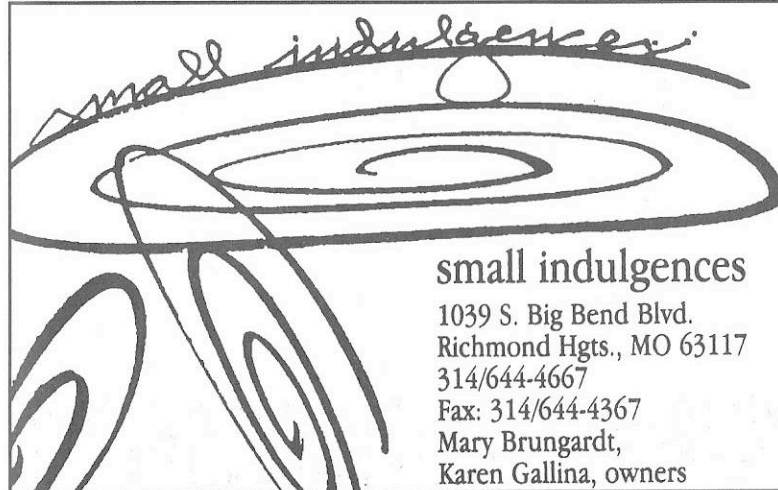
Arlene Zarembka

Attorney at Law

Since 1974

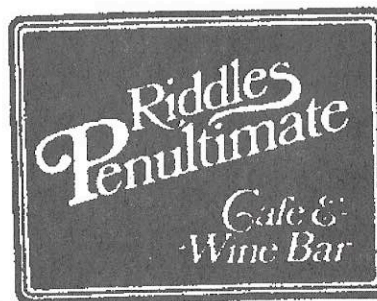
Wills • Trusts • Estate Planning • Powers of Attorney
Beneficiary Deeds • Living Wills • Probate
Accident Cases • Personal Injury • Workers Compensation
Social Security Disability • Small Business
Real Estate • Security Clearances • General Litigation

225 So. MERAMEC, SUITE 210, CLAYTON, MO 63105 PHONE: (314) 726-6355



small indulgences

1039 S. Big Bend Blvd.
Richmond Hgts., MO 63117
314/644-4667
Fax: 314/644-4367
Mary Brungardt,
Karen Gallina, owners



**Andy & Paula
Ayers**

in the Exciting UCity Loop

6307 Delmar
University City, MO 63130

voice 314.725.6985

fax 314.725.1153

www.RiddlesCafe.com



Dr. Bill Russell MFA, DC, DACBSP

Performing Arts Injuries

Clayton Physical Med.
7700 Clayton Rd., Suite 109
St. Louis, MO 63117
781-0181

Performing Arts Rehab Center
524 Trinity Avenue
St. Louis, MO 63130
(314) 795-8839 24 Hrs.

WEBSTER EYE CARE

7945 Big Bend Blvd.
Webster Groves, MO 63119

Phone: 314.962.7580 ■ Fax: 314.962.3026
webstereyecare@att.net

Hours: M-W-F: 9-5. T-Th: 9-6. Sat: 9-1

Gail B. Doell, O.D.
OPTOMETRIST

SCHUCHAT, COOK & WERNER

ATTORNEYS AT LAW

SERVING LABOR UNIONS AND THEIR MEMBERS
FOR OVER 50 YEARS

LORETTA K. HAGGARD
ATTORNEY AT LAW
(314) 621-2626

THE SHELL BUILDING
1221 LOCUST ST., 2ND FL.
ST. LOUIS, MO 63103

UNION AVENUE CHRISTIAN CHURCH

Are you
seeking peace?

ALL
who
seek
the
GOD
of
peace
are
WELCOME



733 Union Blvd. • Union at Enright • (314) 361-8844 • www.union-avenue.org



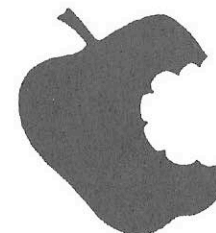
Cutting Edge Styles

David's Design Salon
2233 S. Grand St. Louis, MO 63104
314.771.9001

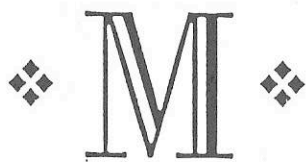


Since 1984

THE
ST. LOUIS
HILLS
DENTAL
GROUP
6979 CHIPPEWA
ST. LOUIS
MISSOURI
63109
(314) 644-0440



John O. Andreas, D.D.S.



Mayer Funeral Home

Thomas R. Kraus, Manager

4356 Lindell Boulevard
St. Louis, Missouri 63108

314.533.0293

314.533.6974 FAX



GE Financial Assurance
Terra - Independent
Accountants Network

Louis J. Naeger
Registered Representative

Branch Office
662 North Creek Drive
Festus, MO 63028
636 937-8351, Fx: 636 937-0574
lounaeger@ljnaegerassoc.com

Terra Securities Corp.
Member NASD, SIPC, MSRB
Office of Supervisory Jurisdiction
1065 Executive Parkway, Suite 220
St. Louis, MO 63141

LEFT BANK BOOKS

St. Louis' Full-Line
Independent Bookstore

- Full-selection of new & used books.
- 10% off all hardcovers everyday.
- Friendly, knowledgeable service. We love books!
- Educational & corporate discounts with free delivery.
- Booksignings, literary events & reading groups!

399 NORTH EUCLID

314-367-6731

WWW.LEFT-BANK.COM



Randle & Associates, LLC
Certified Public Accountants

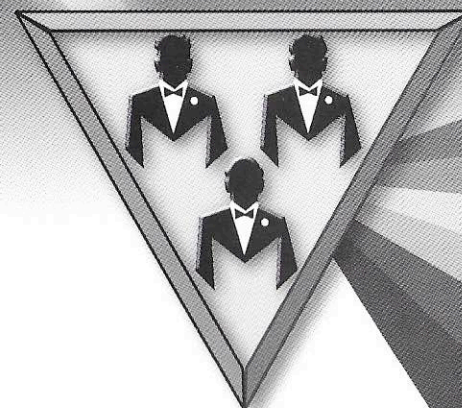
320 Brookes Drive (Suite 200)
St. Louis, MO 63042
314.731.8085
314.731.8091

Member: American Institute of Certified Public Accountants
Missouri Society of Certified Public Accountants

A Crystal Celebration:

The Gateway Men's Chorus

Fifteenth Anniversary Concert



21 - 22 June 2002

8 p.m.

St. Louis Art Museum

Tickets \$20 & \$25

Tickets available at Botanicals,
Left Bank Books, Planet Proud,
through Chorus Members
or call 314.621.7286

www.gmc-stl.org



Interpreted for the Deaf