

when ordinary  
just won't do

Botanicals  
Design  
Studio

'The  
Alternative  
To Ordinary'



314-772-7674

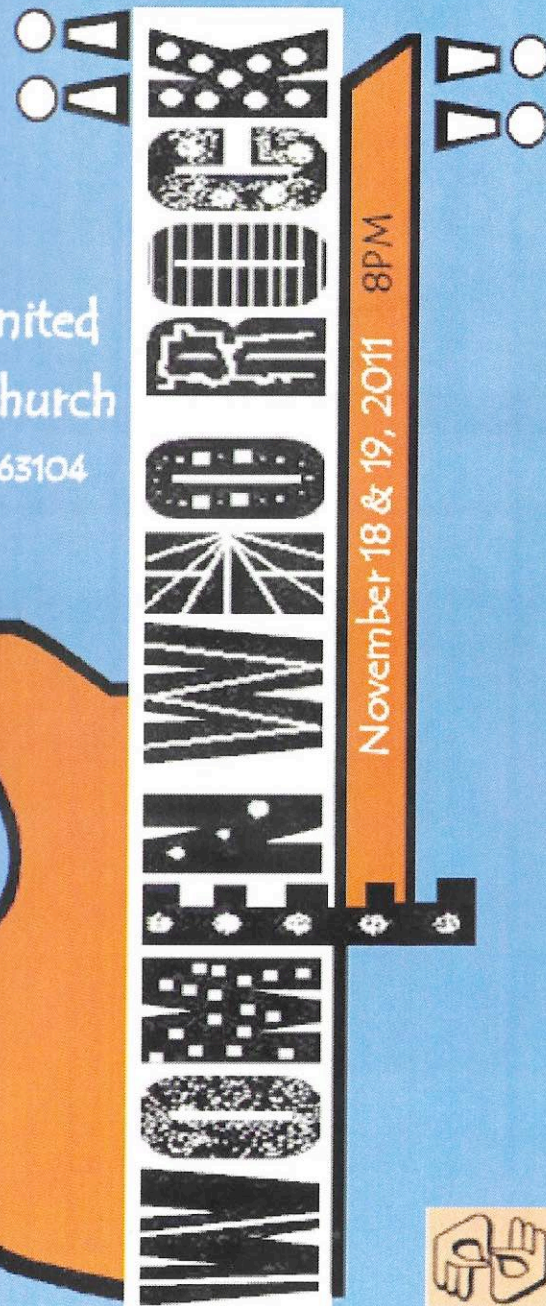
3014 South Grand Avenue • St. Louis, MO 63118 • [flowers@botanicalsdesignstudio.com](mailto:flowers@botanicalsdesignstudio.com) • [www.botanicalsdesignstudio.com](http://www.botanicalsdesignstudio.com)

November 2011

CHARIS  
The St Louis Women's Chorus

PRESENTS

Lafayette United  
Methodist Church  
2300 Lafayette 63104





NIGHTCLUB•LOUNGE•PATIO BAR•KARAOKE BAR•DANCE PARTY•

*Just John*  
**CHARIS**

4112 Manchester ave

**OFFICIAL  
AFTER  
PARTY!**

**\$2** BUD LIGHT!  
BUD SELECT!  
EVERY SATURDAY

*With the friendliest staff in the STL!*

DRINKS•LAUGHS•FRIENDS•MUSIC•DANCING•FUN•*Just John*

# CHARIS

The St. Louis Women's Chorus  
presents

## **WOMEN WHO ROCK**

November 18 and 19, 2011  
8:00 P.M.

Lafayette Park  
United Methodist Church

Kourtney R. Strade, Artistic Director

Chelle Habecker, Accompanist

CHARIS receives financial assistance from the  
Regional Arts Commission.





## Who We Are

CHARIS is a diverse group of women united in our mission to perform music that celebrates and encourages women and the LGBTQ community.

## Membership Information

CHARIS is a non-auditioned chorus that extends an open invitation for membership. Rehearsals are held on Tuesday nights from 7:00-9:30 p.m. at Center for Divine Love, 3617 Wyoming Ave. If you are interested in membership information or in attending a rehearsal, please visit our website at [www.charischorus.org](http://www.charischorus.org) or call (314) 664-9340.

We are accessible to those with disabilities.

## Board of Directors

**Sharon Spurlock, President**

**Kendra Henry, Vice-President**

**Allison Benoit, Secretary**

**Candice Freeman, Treasurer (non-board member)**

### **Members At-Large:**

**Andrea Compton,, Stephanie Keysacker, Desy Maus**

**Kelly Mitchell, Megan Petra, Lisa Riek,**

**Carol Weisman**

## From the Board President Ms. Sharon Spurlock



**A**s we enter our 19<sup>th</sup> season, I am filled with gratitude for the community relationships that sustain our mission and committed to expand those partnerships as we move forward. In the past year, we have moved our board meetings to the LGBT Center, a wonderful place to connect with other like-minded groups. We've been involved in several long range planning and development activities with other LGBT A-focused organizations, and we've had the pleasure of performing with both of our sister organizations, the *Gateway Men's Chorus* and *Band Together*.

We are so grateful to businesses like *Hartford Coffee Company*, *Center for Divine Love*, our advertisers, and silent auction donors who share their space and services with us throughout the year. We are also blessed to have dedicated and hard working volunteers and individual donors who champion our activities. CHARIS is committed to giving back and welcomes opportunities to perform throughout the St. Louis metro area, so give us a call!

Open rehearsals for our World War II style USO show, "*We Can Do It!*", will begin Tuesday, January 10, 2012. If you'd like to sing with us, contact us through our website or on Facebook. If you'd like to support us in other ways, we are always looking for volunteers to help with fundraising, organizing music, and planning social activities. Be a part of the music!

Sharon Spurlock, President  
The St. Louis Women's Chorus





## From the Artistic Director Ms. Kourtney R. Strade

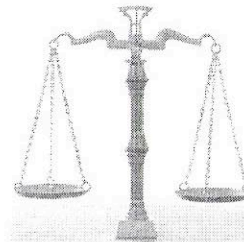
The Rock and Roll Hall of Fame is celebrating 25 years of inductees in 2011, and while none of the first people to enter the Hall of Fame were women, many of the subsequent induction ceremonies paid homage to women rockers. The efforts of female artists in the genre have turned pop culture on its head numerous times over the last several decades. Tonight, we honor those performers who made musical history by giving us their 'no holes barred,' 'get outta my way,' 'I'm not taking any crap' attitudes.

We are also very excited to present our show in concurrence with a special new exhibit at the Rock and Roll Hall of Fame entitled *Women Who Rock: Vision, Passion, Power*. This "groundbreaking and provocative new exhibit illustrates the important roles women have played in rock and roll, from its inception through today. *Women Who Rock: Vision, Passion, Power* highlights the flashpoints, the firsts, the best, the celebrated -- and sometimes lesser-known women -- who moved rock and roll music and American culture forward." (RRHoF website) Since a trip to Cleveland may not be in your near future, we are bringing the museum exhibit to you! Well, sort of. Our concert may not have Lady Gaga's famed "meat dress" or 2 floors of artifacts and videos, but it does include a small slice of music from all of the major rock eras. The songs you will hear tonight were all made famous by women or bands with women members, and all the artists are either in the Hall of Fame, or highlighted in the special exhibit. Your program lists the year the singer or band was inducted, where applicable.

For me, with my classical music background, this concert has been very educational! For instance, I learned that Marilyn Manson is not a woman (his name is *Marilyn*, for goodness sake!), and that Peggy Lee and Brenda Lee are not related (who says studying rock and roll can't be worthwhile?!). I also think the chorus has had a lot of fun learning music from the different rock eras, especially with the wide age range of our chorus members. The younger singers enjoyed visiting the 1950s and '60s, and I would dare to say that even our more mature CHARISians had a good time singing Pink and Lady Gaga! I hope you find something you like in tonight's show, and have as much fun hearing the musical evolution as we have singing it for you. Finally, in the words of Janis Joplin, "Rock On Out."

Kourtney

## Loretta K. Haggard, Attorney at Law



Schuchat, Cook & Werner  
1221 Locust St., 2nd Floor  
St. Louis, MO 63103  
(314) 621-2626

Representing labor unions and  
employees in employment matters

Proud member and supporter of CHARIS for the past 17 years!

**Nutritional support for men, women and  
children living with HIV/AIDS or Cancer.**

**Make a difference, make a donation.  
Your Food | Your Funds | Your Time**



**www.foodoutreach.org  
info@foodoutreach.org  
314.652.FOOD**

## ROSENTHAL, PACKMAN & CO., P.C.

Certified Public Accountants



*Serving the gay and  
lesbian community for  
over 40 years!*

Providing accounting, estate  
and tax planning, tax return  
preparation, personal  
financial planning, and  
small business consulting.

www.rosenthalpackman.com  
(314) 726-0020



## CHARIS:

**C** HARIS was the realization of the dream of its founders Cindy Sohn and Juliet Jackson. With the guidance and support of the Gateway Men's Chorus (GMC), they organized the Committee to Unite Women Singers in the fall of 1992, with the goal of creating a chorus open to all women, regardless of cultural background or musical experience. CHARIS has always been a non-auditioned chorus.

Twenty-five women attended the first meeting of the chorus held in January 1993. An acting Board of Directors was appointed at that time to organize and direct the activities of the chorus. CHARIS was granted status as a not-for-profit organization by the State of Missouri on September 27, 1993 and received confirmation of its tax-exempt status as a 501(c)(3) corporation in July 1994.

The chorus made its first public appearance on May 23, 1993 at Trinity Episcopal Church in a fundraiser to benefit Northside AIDS Outreach. Shortly thereafter, CHARIS took the stage with GMC to perform at the latter's Pride Concert in 1993. CHARIS made its solo debut in October 1993 and has subsequently produced two to three solo performances along with community benefits each year.

Chorus highlights include a performance at the "Notes From Home" series at the Sheldon Memorial on January 24, 1995, at which time the chorus recorded "Dream In Color," its first commercially released tape. CHARIS hosted and performed at the 1995 Gay and Lesbian Association of Choruses (GALA) Leadership Conference for delegates from around the U.S. and a number of foreign countries.

In 1996, CHARIS proudly performed in Tampa, Florida at GALA Festival V. Our performances have benefited the Cathedral Mission Society, The Names Project, Metropolitan Food Pantry Association, Habitat for Humanity, and Parents, Families and Friends of Lesbians and Gays (PFLAG).

Merry Keller came to CHARIS as Interim Director in 1999 and accepted the position of Artistic Director in January 2000. Many wonderful concerts ensued under her direction. Highlights included "Sing for the Cure," a concert benefiting the Susan G. Komen Breast Cancer Foundation in June 2001 and CHARIS' tenth anniversary concert, "A Decade of Song," featuring special guest artist Holly Near.

Another era in CHARIS' legacy began in the chorus' 12th season with the leadership of new Artistic Director Aric Henson, former director of GMC's Ensemble. During Henson's debut season, he directed CHARIS in "Postcards: Journeys of the Heart" at the New City School and "In The Groove" at The Shrewsbury Community Center. CHA-

## Through the Years Herstory

RIS' 13th season featured the shows, "Fired Up!" at the Missouri History Museum and "Broadway: A CHARIS Cabaret" at the Shrewsbury Community Center.

In January 2006, the chorus officially moved to its new rehearsal space and home at Lafayette Park United Methodist Church. An important factor in this decision was a commitment to greater accessibility. The church's elevator made it possible for those with disabilities to become members of CHARIS, serve on its Board of Directors, or attend other chorus functions.

The 2006-2007 season was a banner year for the chorus and opened with "Legends" featuring St. Louis' own legend, Kim Massie as the guest artist. In the spring, CHARIS staged the world premiere performance of "The Vegans of Provincetown," a witty and lesbian-friendly homage to Gilbert and Sullivan.

CHARIS' 15th anniversary season began in November 2007 with the Academy Awards tribute - "CHARIS Does Oscar." In April 2008, the chorus invited special guest artist Lisa Koch, a talented singer-songwriter and comedienne, to the stage for "CHARIS On The Couch." In July 2008, CHARIS members took to the stage in Miami and proudly shared their voices with thousands of other LGBT singers at the GALA Festival VIII.

CHARIS' 16th season began with an ending, as Artistic Director Aric Henson brought his tenure to a close. After leading CHARIS in a creative interpretation of "The Four Elements" in the fall of 2008, he handed the baton to our current Artistic Director, Kourtney R. Strade.

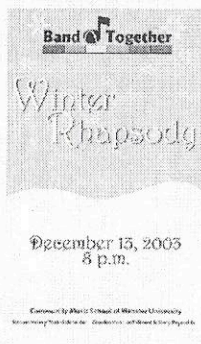
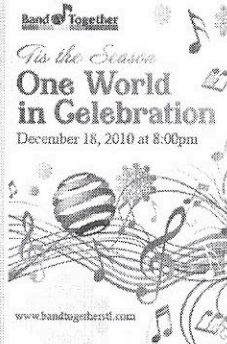
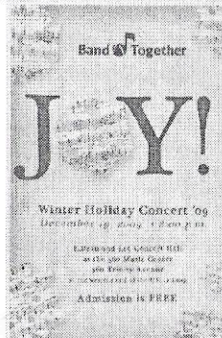
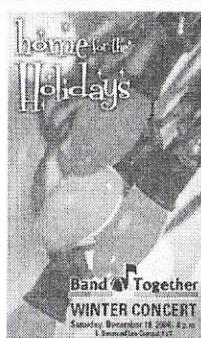
Strade officially took the helm in January 2009 and directed CHARIS through a musical journey of LGBT memoirs with "Coming Out" in May 2009. In CHARIS' 17th season, Strade led the chorus into new territory with two musically-challenging offerings — November 2009's "Quantum Leap," a concert of music by women composers over the centuries, and May 2010's "Unplugged," an offering of a cappella numbers.

Tonight, as the chorus opens its 19th season, we salute the independent and sometimes audacious women of rock and roll. With the largest contingent of singers in our history, we are poised for an amazing year including our own USO show and a trip to the Gay and Lesbian Association of Choruses Festival in Denver CO. Your support is what sustains us; so thanks a million. You Rock!

**Now it is up to the women of CHARIS and "you," our audience, to continue creating the legacy of CHARIS!**



# Band Together



*Greatest Hits: Season 15*  
**WINTER HOLIDAYS CONCERT**  
 SATURDAY, DECEMBER 17, 2011 AT 8 P.M.  
 THE 560 MUSIC CENTER - ADMISSION IS FREE - BANDTOGETHERSTL.COM

## GALA 20<sup>IN</sup>12 CHALLENGE

We've been given a rare opportunity in our fundraising drive for the GALA Choruses Festival in Denver, Colorado in July 2012. Two anonymous donors have posed a fundraising challenge. They will **match** up to **\$1,000** in donor contributions toward GALA Festival.

We've set a goal to send 20 singers to the 2012 Festival. The average cost of a delegate's attendance at the five-day festival will be \$700-\$1,000.

This is where you come in. Any amount you can give (whether it's \$5 or \$500) will help us reach our goal of matching the \$1,000 contribution on the table, allowing us to provide financial assistance to members for the Festival.

For information on contributions, please contact Kendra Henry at [kellen518@gmail.com](mailto:kellen518@gmail.com).

More information on the GALA Choruses Festival can be found at [galachoruses.org](http://galachoruses.org).

## Mama Kiki's Mixx - Nutz Christmas Celebration!

by Joe Alway-Baker & Bart Baker

*a musical dramedy*

Dec 8, 9, 10 & 11  
 Dec 16, 17 & 18

[www.MamaKiki.org](http://www.MamaKiki.org)

 **the connection**  
 your multicultural church

6701 Virginia Avenue  
 314.256.0545



## **Artist Biographies**

### ***Kourtney R. Strade, M.A.***

Kourtney received her Bachelor of Science in Vocal Music Education from Northwest Missouri State University and her Master's degree in Vocal Performance from the University of Missouri -Kansas City, Conservatory of Music. She is currently an instructor of voice for the Community Music School of Webster University and is the director of music at Lafayette Park United Methodist Church. Additionally, Kourtney received a Certificate of Vocology from the University of Iowa, and she uses this expertise in her own business, Heartland Healthy Voices, providing vocal health seminars, private voice lessons, and transgender voice training.

Ms. Strade is also an accomplished mezzo-soprano and has performed on stages across the United States in opera, oratorio, and recital. Recent roles include Freddie in *The Vegans of Provincetown*, Rosina in *Il Barbiere di Siviglia*, and Joan in the monodrama *Jehanne de Lorraine*. Kourtney has served as a singing voice consultant for the University of Iowa Voice Clinic, and worked as a clinician in Voice Diagnostics. In her private studio, Ms. Strade has helped many persons strengthen their singing voices following a voice disorder, and several of her students have gone on to become performance scholarship recipients and competition winners.

As an active member in the National Association for Teachers of Singing, the Music Educators National Conference, and a recent consultant for the Choral Journal, the national publication of the American Choral Directors Association, Kourtney is well-respected in the voice field and continues to make her mark as a musician and a specialist in vocal health. Kourtney is excited about continuing to serve as the Artistic Director for CHARIS.

### ***Frankie Bonuso - Guitarist***

## **Artist Biographies**

### ***Chelle Habecker - Accompanist***

Chelle holds a Master of Arts in Music from the University of Hawaii, Manoa, with an emphasis in Ethnomusicology. She earned her BA in Music, Piano Performance, and an AA in Piano Pedagogy from Spring Arbor University in Michigan. Chelle teaches piano privately and through Community Music School, accompanies musicians at NATS and Solo-Ensemble festivals, and strives to balance her 2nd-shift occupation with her active family!

This is Chelle's 4th season playing for Charis

### ***Tena Polukewich - Sign Language Artist***

Returning for another performance, Tena is delighted to appear as CHARIS' sign language interpreter. For the past few years, she has been interpreting contemporary religious music at a local church and for various artists at the St. Louis Pride Festival. She has combined her passion and degrees in dance and sign language to teach African drums, rhythm and dance to deaf children.

### ***Kelly Mitchell - Bass***

Kelly Mitchell started singing with CHARIS in 1998. She previously played bass in the Quantum Leap concert at Lafayette United Methodist Church. She has also played with artist Ro Anderson, and with the worship band, *Out on a Limb*, at Zion United Methodist Church.

### ***Stephanie Keysacker - Percussionist***

Stephanie Keysacker grew up in a musical family and realized early on that she, too, had a love for playing music. She began playing drums around age 13 but only recently began sharing her talents publicly. When she's not drumming for CHARIS - The St. Louis Women's Chorus, she can be found accompanying local singer/songwriter Ro Anderson at area venues. Musical interests aside, Stephanie enjoys traveling the U.S. and beyond and looks forward to her next adventure with her partner, Kendra.



# ★BUBBY & SISSY'S★

602 Belle St. Alton, IL 618-465-4773

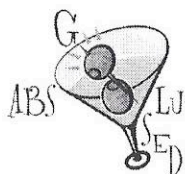
**OPEN TUESDAY-SUNDAY**

*DANCE PARTY KARAOKE ON THURSDAYS*

**FRI. & SAT. HUGE DRAG SHOW @ 11P**

★ FIND US ON FACEBOOK OR ★

**WWW.BUBBYANDSISSYS.COM**

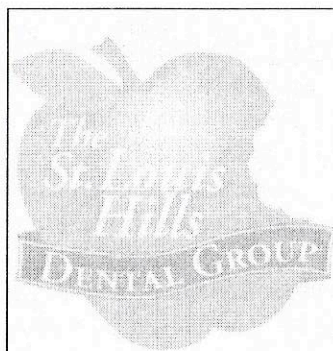


*Proudly supports* **CHARIS**  
The St. Louis Women's Chorus

## ROCK ON LADIES!

Bring in this ad for 10% off your tab after the show!

3196 S Grand • 314.771.9300 • *absolutligoosed.com*



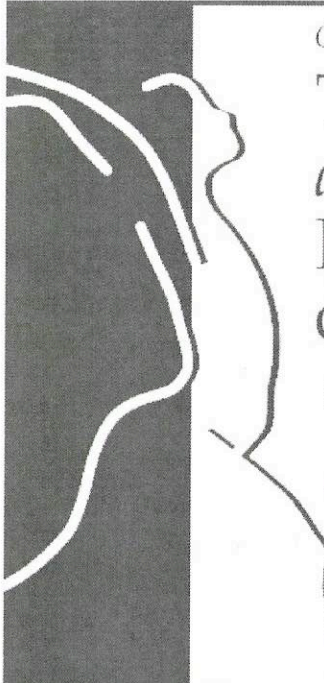
John Andreas, D.D.S.

6979 Chippewa  
St. Louis, MO 63109

314.644.0440

[www.stlouisishillsdental.com](http://www.stlouisishillsdental.com)

*Precision care with uncommon gentleness.*



*Our Specialty . . .*  
**Treatment  
and  
Prevention  
of Injuries**  
  
Dr. William Madosky,  
Chiropractic Physician  
  
ACUTE/CHRONIC PAIN RELIEF  
SPORTS INJURIES  
  
2175 Big Bend  
Richmond Heights, MO 63117  
[www.drmadosky.com](http://www.drmadosky.com)  
**(314) 645-8805**

## CENTER FOR DIVINE LOVE

An All-inclusive Outreach Based Urban Ministry



**Sunday Service  
10:30 A.M.**

3617 Wyoming Street  
St. Louis, MO 63116

314-776-7969

[divinesc@swbell.net](mailto:divinesc@swbell.net)

[www.dscitychurch.org](http://www.dscitychurch.org)

*We Welcome You and Our New Pastor Maggid Georgy Rock!*



# CHARIS

## The St. Louis Women's Chorus

### Soprano I

Cassie Coleman  
Jo Cannon  
Kelsi Davis  
Kendra Henry-Keysacker  
Julie Lynch  
Kristen Myers  
Belinda Quimbly  
Allison Rose  
Aleksandra Shklyar  
Carol Weisman

### Soprano II

Allison Benoit  
Katie Benoit  
Penny Frame  
Colleen Gilmore  
Keren Gomez Guilds  
Loretta Haggard  
Cindy Martin  
Megan Petra  
Chloe de los Santos  
Kyra Short  
Diana Stuckey  
Kim Powlishta  
Karen Shye Woods

### Alto I

Amy Aldridge  
Brittany S. Buck  
Edna Coleman  
Meredythe Guilds  
Julie Harmann  
Zoanne Leavy  
Desy Maus  
Leah Patriarco  
Lauren Rapp  
Lisa Riek  
Sheryl Smothers  
Angel Walker  
Jennafer Wells

### Alto II

Star Ellis  
Candice Freeman  
Danielle MacCartney  
Sharon Spurlock  
Donna Yakel  
Dina Young  
Susan Young



# "We Can Do It!"

## A USO Show

April 20-21, 2012  
8 p.m.

Lafayette Park United  
Methodist Church  
2300 Lafayette Avenue

For more info:  
[www.charischorus.org](http://www.charischorus.org)  
or call (314) 664-9340



RAC





# WOMEN WHO ROCK

*St. Louis Blues*  
Bessie Smith, Recorded 1925

W.C. Handy, arr. Shaw  
Hall of Fame, 1989

*Jambalaya*  
Brenda Lee, 1956

Hank Williams, arr. Shaw  
Hall of Fame, 2002

*At Last*  
Etta James, 1961

Harry Warren, arr. Althouse  
Hall of Fame, 1993

*I'm A Woman*  
Peggy Lee, 1963

Leiber and Stoller, arr. Huff

*Karen Shye Woods and Leah Patriarco, Soloists*

*Be My Baby*  
The Ronettes, 1963

Phil Spector, arr. Huff  
Hall of Fame, 2007

*Allison Benoit, Katie Benoit, Zoanne Leavy, Julie Lynch,  
Danielle MacCartney, Kristen Myers*

*"Beehive Medley"*

arr. Brymer

Little Eva, The Marvelettes, The Supremes, The Shangri-Las  
*Brittany S. Buck, Colleen Gilmore, Allison Rose, Kyra Short,  
Aleksandra Shklyar, Carol Weisman*

*Chain of Fools*  
Aretha Franklin, 1967

Don Covay, arr. Gilpin  
Hall of Fame, 1987

*Kyra Short, Soloist*

*California Dreamin'*  
The Mamas and The Papas, 1965

John and Michelle Phillips, arr. Emerson  
Hall of Fame, 1998

*Somebody to Love*  
Jefferson Airplane, 1967

Darby Slick, arr. Emerson  
Hall of Fame, 1996

*Me and Bobby McGee*  
Janis Joplin, 1972

Kris Kristofferson  
Hall of Fame, 1995

*Kendra Henry-Keysacker, Solo*

*River Deep – Mountain High*  
Tina Turner, 1966

Phil Spector, arr. Shaw  
Hall of Fame, 1991

*Both Sides Now*  
Joni Mitchell, 1970

Joni Mitchell, arr. Jasperse  
Hall of Fame, 1997

*Dina Young and Amy Aldridge, Soloists*

*Heart of Glass*  
Blondie, 1978

Harry and Stein, arr. Sharon  
Hall of Fame, 2006

*Amy Aldridge, Cassie Coleman, Kelsi Davis, Leah Patriarco,  
Megan Petra, Jennafer Wells, Dina Young*

*"Slices of ABBA"*  
ABBA, 1975-81

B. Anderson, S. Anderson, and B. Ulvaeus,  
arr. Milloy  
Hall of Fame, 2010

*Girls Rock the '80s*  
Joan Jett, Patti Smyth,  
Katrina & the Waves,  
Madonna, Pat Benatar,  
Cyndi Lauper, The Gogos

arr. Mark Brymer

*Lauren Rapp, Soloist*

*Love Shack*  
The B-52s, 1989

Pierson, Schneider, Strickland, Wilson, arr. Huff

*I Can't Make You Love Me*  
Bonnie Raitt, 1991

Reid and Shamblin, arr. Sharon  
Hall of Fame, 2000

*Loretta Haggard, Desy Maus, Lisa Reik, Sharon Spurlock,  
Lisa Riek, Susan Young*

*Like a Prayer*  
Madonna, 1989

Leonard and Ciccone, arr. Anders and Davis  
Hall of Fame, 2008

*Belinda Quimby, Cassie Coleman, Keren Gomez-Guilds,  
Katie Benoit, Soloists*

*Get the Party Started*  
Pink, 2001

Lina Perry, arr. Brymer

*Telephone*  
Lady Gaga, 2010

Knowles, Daniels, Franklin, arr. Anders and Davis

*\*Please enjoy a fifteen minute intermission*



❖ 24 Hour  
Supervised  
Kennel-Free  
Doggy Daycare



❖ Animal Behavior  
College Certified  
Trainer

❖ 6 Live webcams  
for viewing your  
pup in action!

❖ Pet CPR & First  
Aid Certified Staff



**Daycare  
Grooming  
Boarding  
Training**

2764 Rt 66 Business Park Dr.  
Edwardsville, IL 62025

618-659-2366 Phone  
TravelingTailsInn.com  
[eeversttigm@gmail.com](mailto:eeversttigm@gmail.com)



**20% off**



**Grooming Appointment**

*(Includes: Haircut or trim, bath,  
ear cleaning, & nail trim)*

\*New Customers Only

Expires:  
12/31/11

## Special Acknowledgements

CHARIS gratefully acknowledges the help and contributions of the following in preparation of this production.

Producer: Desy Maus

Production Committee: Bill Byrd, Renee Dix, Sharon Smith,  
Kelly Mitchell

Performance Committee: Katie Benoit, Kelsi Davis, Renee Dix,  
Kim Powlishta, Belinda Quimby,  
Sharon Smith, Carol Weisman, Jen-  
nafer Wells, Donna Yakel, Dina Young

PR Committee: Lisa Riek, Chloe de Los Santos,  
Sharon Spurlock

Box Office Manager: Brandy Herron

Stage Manager: Elaine Laws

Assistant Stage Manager: Mary Jo Misselhorn

Sound Technician: Bill Byrd

Lighting Technician: R.E. Dix

Asst. Lighting Technician: Logan Maus

Set Designer: R.E. Dix

House Manager: Debbie Baker

Advertisement Sales: Carol Wiesman

Cover/Poster Design: R.E. Dix

Grant Writer: Sharon Spurlock

Program Production: Bill Byrd

Rehearsal CDs: Susan Young

Webmaster:s Allison Benoit, Candice Freeman

Volunteers: Andrea Compton, Sayer Johnson  
Sarah Martin, Bill Maus, Sharon Smith,  
Scott Stevenson, Leo & Barb Weis-  
man, and all who gave their time to  
help make this concert sing!

We sincerely regret any omissions.





You are invited to shop in an evening of

# Splendor in the Glass

Thursday December 1, 2011  
7-10 PM

Looking Glass Designs  
1917 Park Ave  
Saint Louis, MO 63104

- Free gift wrapping
- Food & Wine
- Spend \$20 or more and receive a free gift valued at \$18
- Can't make the event? Shop a day before & day after and mention BPW

\*Grouping coupons cannot be used

A percentage of sales benefit the Benton Park West Neighborhood Association

## WHAT IF CHURCH COULD LIGHTEN YOUR LOAD?

RETHINKCHURCH at 10thousanddoors.org

Lafayette Park United Methodist Church  
2500 Lafayette Ave. - St. Louis  
314-771-1111  
lp-umc.org

Mission:  
"to proclaim Christ's presence in  
our world, locally, nationally and beyond"



*As a people of faith, we  
recognize the diversity of  
people created in the  
image of God.*

*We welcome people of any  
age, gender, race, ethnic-  
ity, sexual orientation,  
socioeconomic status,  
health status, and any  
element of humanity  
created by God.*



GATEWAY Men's CHORUS

PRESENTS

# SILVER BELLS

FEATURING SONGS FROM HAIRSPRAY  
AND THE BOOK OF MORMON

WASHINGTON UNIVERSITY'S  
EDISON THEATRE  
DECEMBER 9-10 8 PM

Tickets: \$20 General. \$25 VIP  
at GatewayMensChorus.org



Missouri Arts Council





## Celebrating the Uniqueness of Every Child & Family for 25 Quirky Years!

LagoonaMagoo Toys  
5555 St. Louis Mills Rd.  
Suite 566  
Hazelwood, MO 63042  
314.227.5335



LagoonaMagoo Toys  
6308 North Illinois  
Fairview Heights, IL 62208  
618.628.9270

[www.happyupinc.com](http://www.happyupinc.com)



Once Upon a Toy  
2460 Troy Rd.  
Edwardsville, IL 62025  
618.656.9596  
618.656.9621 fax



## THE LGBT CENTER OF ST. LOUIS

4337 Manchester Ave. - St. Louis, MO 63110  
314-472-LGBT (5428)

*Providing resources and support to the lesbian, gay, bisexual, transgender, questioning and allied community of The Gateway City and its surrounding areas through education, empowerment, outreach, and community building.*

[www.lgbtcenterstl.org](http://www.lgbtcenterstl.org)

## S. Hileman & Associates Products for A Healthy You

Nutrillite Supplement  
Artistry Skin Care

314-583-8315

314-583-4914

[shelbyandsheryl@yahoo.com](mailto:shelbyandsheryl@yahoo.com)

3024 Lafayette Ave

St. Louis, MO 63104

## Additional Ways to support CHARIS

As a not-for-profit organization, the chorus relies heavily on contributions to help us meet financial obligations and to realize dreams for the future.

# iGive.com™

Change online shopping for good.

Shopping online & online searches.

- Start shopping! At [www.iGive.com/CHARIS](http://www.iGive.com/CHARIS)
- Start Searching at <http://isearch.igive.com/>

**CHARIS is Pleased to  
announce PAYPAL**

Donate through PAY PAL, same service for many other online purchases.

Contact us at (314) 664-9340 about how, through PAY PAL, your donation can go right on your credit or debit card.

## Congratulations to the women of CHARIS for another fantastic concert!

Special Congratulations to Ms. Kourtney Strade and the Production Team. You have done another great job of bringing this group of women together and creating a "safe space" to perform!



Buy some groceries and flip a couple coins  
our way with the Schnucks eScrip Program!



Just sign up for the eScrip program and swipe your eScrip card before the cashier starts ringing up your items — Schnucks will then donate up to 3% of your purchase to CHARIS.

To register, just return this form to any staff member at tonight's concert or mail it to: CHARIS, Attn: eScrip Program, P.O. Box 21642, St. Louis, MO 63139. We'll send your new eScrip card to the address listed on the form.

-----  
**PLEASE PRINT**

Name \_\_\_\_\_

Street Address \_\_\_\_\_

City, State, Zip \_\_\_\_\_

Email \_\_\_\_\_

For office use only:

Card Number(s) \_\_\_\_\_  
\_\_\_\_\_  
\_\_\_\_\_

**Congratulations,  
CHARIS!**

**WE ROCK!**

Love, the Maus, McDowell, and Weisman families

**Wishing you a speedy  
recovery, Sharon.**

**We love you and  
support you always.**



## Become a Member - Be Part of the Fun!

CHARIS is a non-audition chorus. We invite you to visit any Tuesday when we are in rehearsal and see what we are about.

Call (314)664-9340 to confirm we are in rehearsal or with any questions about the chorus.

### *Be a Singing Member as simple as:*

- Regular attendance at rehearsals
- Commitment of time and energy to learn your music
- Payment of dues
- Responsibility for concert attire
- Participation in decision-making and fundraising

### *Non-Singing Membership*

Non-singing members are welcomed to join and help with the variety of behind-the-scenes work.

- Board membership
- Ushering at a concert
- Planning or working a fundraiser
- Cataloging music
- Building sets
- Assisting with publicity

## Same-sex Ballroom & Latin Dance Classes

Thursdays 7-8 pm

BEGINNERS CLASS -  
NO EXPERIENCE NECESSARY

NEW SESSION STARTS 1ST THURSDAY  
OF EVERY MONTH.

For more information:

[WWW.STLEQUALITYDANCE.ORG](http://WWW.STLEQUALITYDANCE.ORG)

EMAIL: [STLEQUALITYDANCE@GMAIL.COM](mailto:STLEQUALITYDANCE@GMAIL.COM)



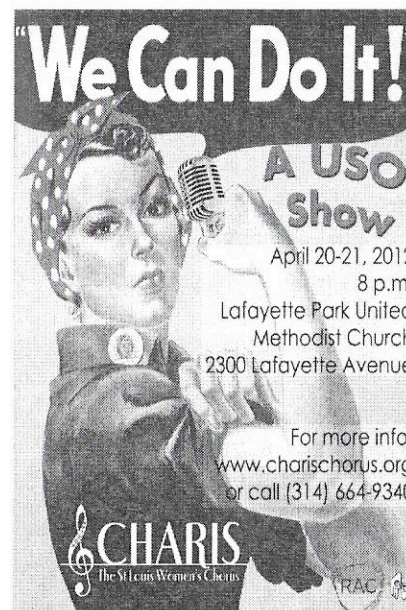
## Upcoming Events

### "Music of the Night" Trivia Night

Saturday, March 3, 2012

Location TBD

7:00 p.m.



### Spring Concert We Can Do It

With Special guest, The  
Gateway Men's Chorus

April 20 & 21, 2012

Lafayette Park

United Methodist Church  
(near Jefferson & I-44)

8:00 p.m.

Pride St. Louis (Performance & Parade)  
June 2012

Tower Grove Park - Dates/Times TBD

CHARIS - The St. Louis Women's Chorus • [www.charischorus.org](http://www.charischorus.org)



**State Farm®**

Providing Insurance and Financial Services

Home Office, Bloomington, Illinois 61710



**Toni Smith CLU® ChFC®, Agent**

4705 Hampton Avenue  
St Louis, MO 63109-2716  
Bus 314 832 3638  
toni@tonismith.net  
www.tonismith.net



Like a good neighbor, State Farm is there.®

**Arlene Zarembka**

*Attorney at Law - Since 1974*

Trusts • Wills • Estate and Medicaid Planning • Trustee Advice  
Special Needs Trusts • Powers of Attorney • Living Wills  
Probate • Real Estate • Step-Parent Adoptions • Name Changes

Website: <http://zarembkalaw.justia.net/>

9378 Olive Blvd. #206, Olivette, MO 63132 Ph: (314) 567-6355

*Happy 35<sup>th</sup> Anniversary wishes to  
Shelby and Sheryl*

"The first 20 years are the hardest"



**GROVE**  
FURNISHINGS

3169 Morgan Ford Rd

St. Louis, MO 63116

314-776-7898

[www.grovefurnishings.com](http://www.grovefurnishings.com)

Extended December hours



*It's just around the corner!*

**Deck those Halls  
&  
Hang those Balls!**

*Rockin' gifts for everyone  
on your list!*

SHOP INDEPENDENTLY; SHOP UNIQUELY!

*Psychotherapy*

*Individuals*

*Couples*

**Maxine Birdsong, LCSW  
Gary L. Hirshberg, LCSW  
Valorie M. Adrio, LMFT, ATR  
Ann Velasco, LCSW**

**(314) 367-2010**

**Committed to the community for over 25 years**



# I want to be a Friend of CHARIS!

Name: \_\_\_\_\_

Address: \_\_\_\_\_

City: \_\_\_\_\_ State: \_\_\_\_\_

ZIP: \_\_\_\_\_ Phone: \_\_\_\_\_

E-Mail: \_\_\_\_\_

My donation is in honor/memory of:

\_\_\_\_\_

\_\_\_\_\_ \$25      \_\_\_\_\_ \$35  
 \_\_\_\_\_ \$50      \_\_\_\_\_ \$100  
                  \_\_\_\_\_ Other

☐ Do not publish my name in the program book.

**Mail contributions to:**  
**CHARIS, P.O. Box 21624, Saint Louis MO 63139**  
**or go to [www.charischorus.org](http://www.charischorus.org)**

*Thank you for your continued support of CHARIS!*

## Friends of CHARIS

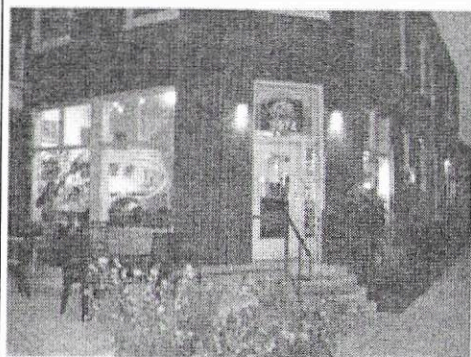
CHARIS expresses thanks to the following people for their gifts & support throughout the 2011-2012 season:

Amy Aldridge	Therese & Sean McKenna
Dale & Thomas Aufferberg	LaTish McKinney
Allison Benoit	Kelly Mitchell
Butler's Pantry	Kristen Myers
Bill Byrd	Novak's Bar & Grill
Cafe Affton	Melinda and Kevn Ohlemiller
Karen Clodfelter	Sharon Opp
Angela Curtis	Megan Petra
Della Torta Confections	Pickles Deli
DJ Epic	Kim Powlishta
Vickie Fothan	Lauren Ramirez
Penny Frame	Lisa Riek
Candice Freeman	Susanna Roe (Pfizer Foundation Grant)
Front Yard Features - Martin Casas	Julia & David Schaffner
Sonja Furiya & Ann Taylor	Marge Schmidt
Mary Nelle Garrecht	Schnucks eScrip Program
Gelateria del Leone	Shameless Grounds
Barbara Gilchrist & Debra Deiermann	Sharon Smith
Colleen Gilmore & Loretta Haggard	Sharon Spurlock
Christine Girard	Kourtney Strade
Beth Glauber	Rodney Strothcamp
Robin Godfrey	Diana Stuckey
Tish Green	Symmetry
Chelle Habecker	Leigh Thacker
Patrice & Daniel Harkins	Mary Anne Tolliver
Hartford Coffee Company	Therese Velasco
David Heitter - Creative Catering	Vintage Vinyl
Rhonda Hembree & Deanne Marion	Amanda Volk
Aric Henson & Scott Stevenson	Walter Knoll Florists
Kevin Johnson	Jenise & Willard Wilson
Kaldi's Coffee	Barbara & Leo Weisman
Mark Keeley	Carol Weisman
Stephanie Keysacker	Robin Woltman
Kim Kopff & Sherrill Wayland	Kirsten Wozniak
Lafayette Park UMC	Dina & Susan Young
Desy and Bill Maus	

*We sincerely regret any omissions.*

If you would like to make a contribution (including honorariums/memorials), please contact us at [charischorus@gmail.com](mailto:charischorus@gmail.com) or visit our website at [www.charischorus.org](http://www.charischorus.org).





3974 Hartford Street  
St. Louis, MO 63116  
314-771-JAVA (5282)  
hartfordcoffee.net

Hartford Coffee Company is proud  
to support Charis and to be a part of  
the Tower Grove community.

New Menu Items

Fresh Baked Pastries

Daily Lunch & Dinner Special

Open Mic Night Every Friday

Live Music Saturday and Sundays

Monthly Local Artist Display

Family Fun Night w/ Celia 1st Wednesday of the Month  
(Kids sing-a-long)

Kid's Indoor Play Area

Outdoor Patio

Free WiFi

#### Hours

Monday	6am - 9pm
Tuesday	6am - 9pm
Wednesday	6am - 9pm
Thursday	6am - 9pm
Friday	6am - 10pm
Saturday	7am - 10pm
Sunday	7am - 7pm

## HARTFORD COFFEE

We air roast our own coffee on  
site in small batches ensuring the  
freshest and highest quality  
coffee available.

Bring this coupon in for a free  
medium coffee!



## Your financial needs are unique.

Whether you want to provide for your loved ones, support the organizations that are important to you, or plan for your own comfortable retirement, I can help you plan for your goals. I'll look at all aspects of your finances, then find solutions that are right for your unique needs. And as your goals and needs change, I'll be there to adjust your plan and help put your dreams within reach.

Our Advisors. Your Dreams. **MORE WITHIN REACH®**

Call me today at (314) 744.4007



Angela M. Curtis, CFP® practitioner  
Financial Advisor  
CERTIFIED FINANCIAL PLANNER™  
practitioner

2 Cityplace Dr  
Ste 380  
Saint Louis, MO 63141

314-744-4007

angela.2.curtis@ampf.com

www.ameripriseadvisors.com/  
angela.2.curtis



Ameriprise Financial is proud to be  
recognized with another perfect score  
on the Human Rights Campaign's  
Corporate Equality Index.

Brokerage, investment and financial advisory services are made available through Ameriprise Financial Services, Inc. Member FINRA and SIPC. Some products and services may not be available in all jurisdictions or to all clients. Ameriprise Financial cannot guarantee future financial results.

© 2011 Ameriprise Financial, Inc. All rights reserved.