



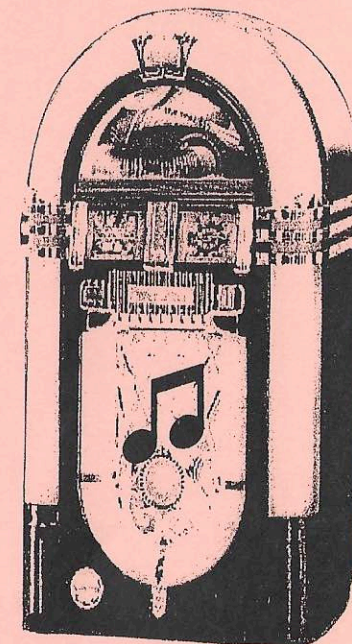
# "In The Groove"

60s, 70s, & 80s

*I'm So Excited*

*I Heard it Through  
The Grapevine*

*I Will Survive*



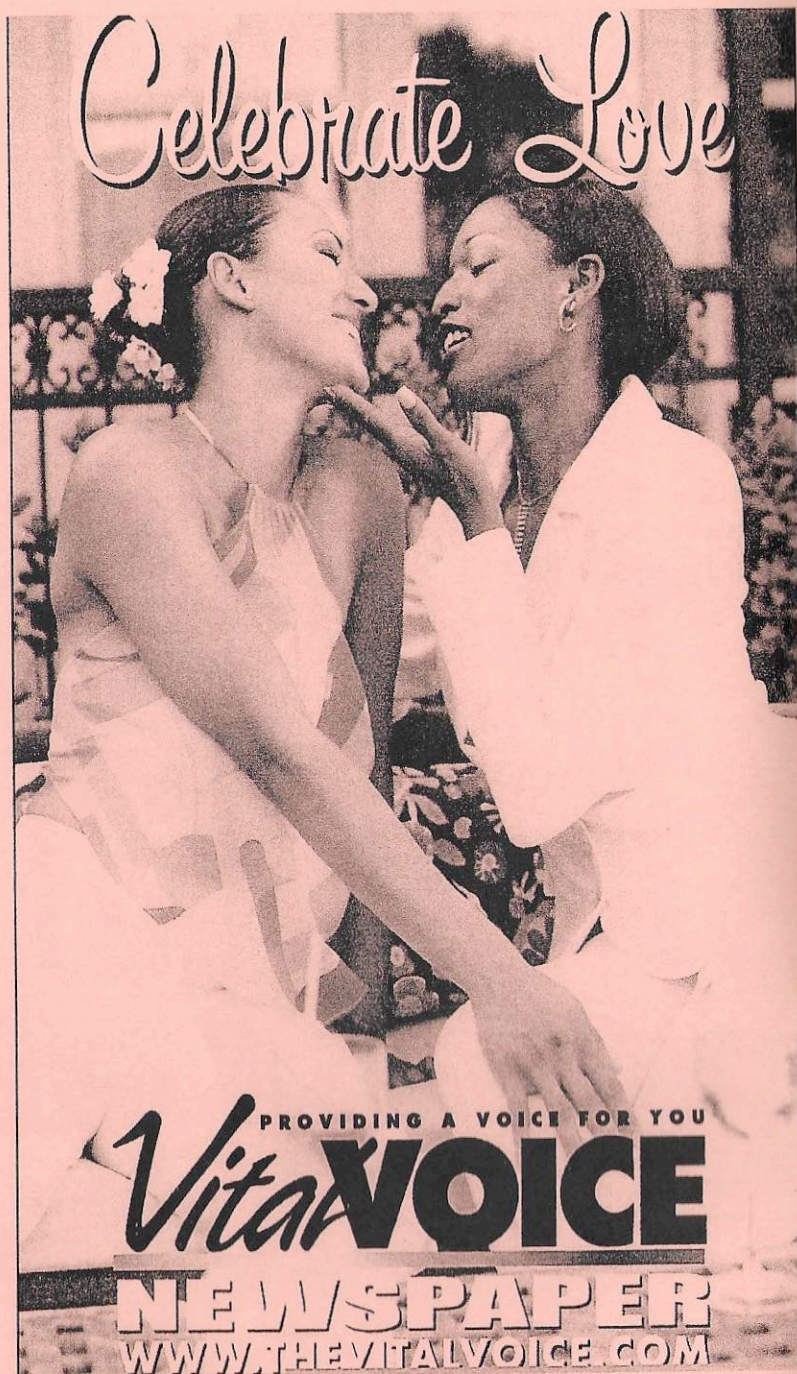
Friday, April 29, 2005 / 8pm / \$10 / \$12 at the door  
Shrewsbury Community Center  
5200 Shrewsbury Ave.

[www.charischorus.org](http://www.charischorus.org) / (314) 822-7580



Interpreted for the Deaf





# Celebrate Love

PROVIDING A VOICE FOR YOU

## Vital VOICE

### NEWSPAPER

WWW.THEVITALVOICE.COM

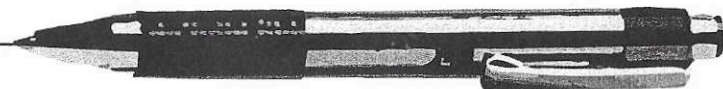
### *President's Message*

On behalf of CHARIS, I would like to welcome you to tonight's concert. We are glad you are here. CHARIS is pleased to be appearing tonight under the leadership of our now permanent Artistic Director, Aric Henson. As we look to the future we do so ably under Aric's leadership, enthusiasm, and vision. With Aric, the CHARIS board has been doing a lot of dreaming lately, and those dreams are coming true. We have set our concert schedule for the next two seasons and have venues in place. But that is just the beginning. Stay tuned and watch as our dreams become reality.

This has been a **fun** concert to prepare. We have learned a few dance steps. For some of us that has been a challenge, but once learned, it was **fun**. We have relived music from our younger days and, for the most part, it was **fun**. And we have 10 new singers with CHARIS this concert. It has been **fun** getting to know them and some of them you will meet as soloists. I hope as you watch this concert, you can feel that **fun** coming through our music.

Thank you for getting "In the Groove" with CHARIS this evening.

Sharon Smith, President





### *Artistic Director's Message*

*Aric Henson*

Over the last four decades, the roles of women in music have drastically changed. In the 50s and early 60s, most of the songs focused on relationship. How a woman related to a man often was how she defined herself. In the mid to late 60s, we had groups like The Supremes who empowered women to say, "STOP!" when a man was out of line. In the 70s we have Gloria Gaynor to thank for helping us all say, "...NOW, GO!" I still venture to say "I Will Survive" is one of the most cherished theme songs of our time. In the 80s, we had the "working girl." She redefined the role of women as equal (or even superior) partners to men for their ability to juggle their lives and be in control of their own destinies.

When Cris Williamson came on the scene in the mid 70s, a whole new movement began. Her music spoke to women who had been silenced by society because of who they were and what they believed. Her song "Sister" is the turning point for thousands of women who finally felt their emotions voiced.

Tonight we travel through the past few decades of Women's Music. We will celebrate, contemplate, and learn along the way. The women of CHARIS have worked extremely hard to provide a fun, upbeat concert that will make you laugh, cry, sigh and think. I am honored to work with them.

As you listen to "In The Groove," I hope that you witness the tenacity of the human spirit and its ability to change the world.

# Corporate seasonings

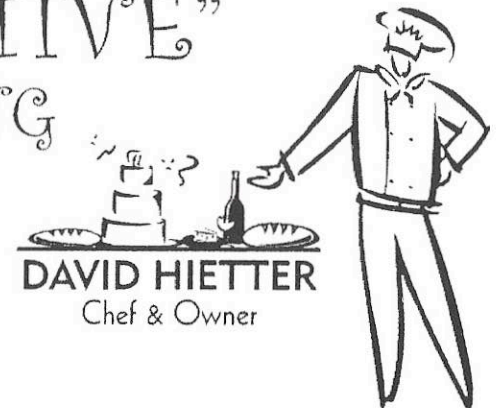
(314) 993-7100 • Fax (314) 993-7030

Best Choice in Business Catering  
Box Lunches • Continental Breakfast  
Hot & Cold Buffets

**Call us for your Business Catering needs!**

*Sally Fitzhugh & Lesley Proud  
Owners & Managers*

## "CREATIVE" CATERING



Phone or Fax  
(314) 434-1050

### *Artistic Director - Aric Henson*

Aric Henson received his musical training at Jefferson College and The University of Missouri, St. Louis. He previously served as director of the GMC Ensemble, Associate Director of the St. Louis Symphony Children's Choir and music director of Faith UMC. He is also a former adjunct faculty member with Jefferson College, where he led the Jefferson College Singers, the Starlight Show Choir and taught private vocal lessons. He has also taught in public and private school settings. Aric also serves as guest conductor and adjudicator for various music festivals. Currently he is on staff at Woodlawn Chapel Presbyterian Church, where he directs The Adult Hand Bell Choir and the Chancel Choir. He also runs a private voice studio in the St. Louis area.

Henson's life revolves around music. He loves to teach and perform and that love has taken him on tours in cities such as Prague, Vienna, Salzburg, Munich, New Orleans, Little Rock, San Antonio, Dallas and Austin. Aric holds affiliations with such distinguished music organizations as Music Educators National Conference, Missouri Music Educators Association, American Choral Director's Association and The Missouri Choral Director's Association.

Aric would like to thank the members of CHARIS for their hard work and determination. Thanks also to Scott for his amazing love.

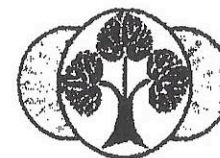
Gail B. Doell, O.D.

## WEBSTER EYE CARE

7954 Big Bend Blvd.  
Webster Groves, MO 63119  
Fax 314.962.3026  
[www.optometrists.org/webstereyecare](http://www.optometrists.org/webstereyecare)

Tel 314.962.7580

Hours: M: 9-7, T&Th: 9-6, W&F: 9-5, Sat: 9-1



*Joy Allen*  
LCSW, M. DIV.

INDIVIDUAL, COUPLE & FAMILY COUNSELING

758 Chamberlain Place, Suite 103, St. Louis, MO 63119 314.918-1003

OFFICE:  
(314) 621-2626

FAX:  
(314) 621-2378

SCHUCHAT, COOK & WERNER  
ATTORNEYS AT LAW



LORETTA K. HAGGARD  
ATTORNEY AT LAW  
[LKH@Schuchatew.com](mailto:LKH@Schuchatew.com)

THE SHELL BLDG., 2ND FLOOR  
1221 LOCUST STREET  
ST. LOUIS, MO 63103



## *CHARIS, The St. Louis Women's Chorus*

### *A Herstory*

CHARIS was the realization of the dream of its founders Cindy Sohn and Juliet Jackson. With the guidance and support of the Gateway Men's Chorus (GMC), they organized the Committee to Unite Women Singers in the fall of 1992, with the goal of creating a chorus open to all women, regardless of cultural background or musical experience. CHARIS has always been a non-auditioned chorus.

Twenty-five women attended the first meeting of the chorus held in January, 1993. An acting Board of Directors was appointed at that time to organize and direct the activities of the chorus. CHARIS was granted status as a not-for-profit organization by the State of Missouri on September 27, 1993, and received confirmation of its tax-exempt status as a 501c(3) corporation in July, 1994.

The chorus made its first public appearance on May 23, 1993, at Trinity Episcopal Church in a fund-raiser to benefit North side AIDS Outreach. Shortly thereafter CHARIS took the stage with The Gateway Men's Chorus to perform at the latter's Pride Concert in 1993. CHARIS made its solo debut in October, 1993, and has subsequently produced two to three solo performances along with community benefits each year.

Chorus highlights include a performance at the "Notes From Home" series at the Sheldon Memorial on January 24, 1995, at which time the chorus recorded "Dream In Color," its first commercially released tape. CHARIS hosted and performed at the 1995 Gay and Lesbian Association of Choruses (GALA) Leadership Conference for delegates from around the U.S. and a number of foreign countries.

In 1996 CHARIS proudly performed in Tampa, Florida at GALA Festival V. Our performances have benefitted the Cathedral Mission Society, The Names Project, Metropolitan Food Pantry Association, Habitat for Humanity, and Parents, Families and Friends of Lesbians and Gays (FLAG).

Merry Keller came to CHARIS as Interim Director in 1999. Merry's exceptional leadership skills and strong background in music both as a performer and teacher provided valuable assets to the chorus. Merry accepted the position of Artistic Director in January, 2000. Many wonderful concerts ensued under her direction. Highlights include "Sing for the Cure," a concert benefitting the Susan G. Women Breast Cancer Foundation in June, 2001 and our tenth anniversary concert, "A Decade of Song," featuring special guest artist Holly Near.

Another era in CHARIS' herstory began with Merry Keller's resignation as Artistic Director at the end of our eleventh season. Aric Henson, former director of the Gateway Men's Ensemble, was hired as Interim Artistic Director for the fall concert, "Postcards: Journeys of the Heart," which was performed at the New City School. "In The Groove" marks Henson's first concert as the newly-appointed permanent Artistic Director.

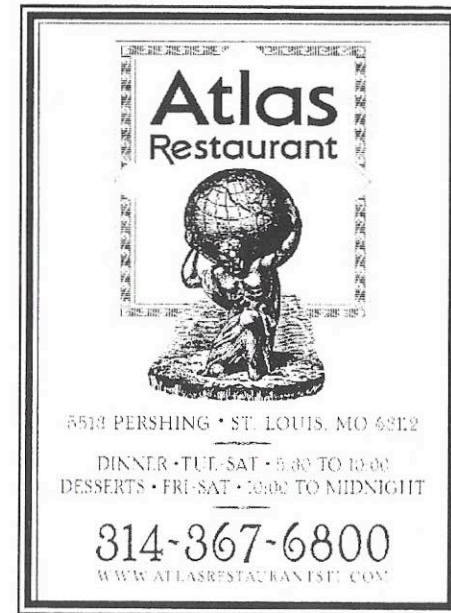
With a talented board of both singers and non-singers addressing management issues, the chorus is looking forward to sharing its voices and vision with its audiences for many years to come.



### *Sign Language Artist - Glenace Humphrey*

Glenace has interpreted for CHARIS since it was founded in 1993, and marks her 29th year as an interpreter in 2005. She is a staff interpreter for Deaf Inter-Link as well as a freelance/community interpreter. Glenace is in her fourth season working hand in hand with Charlie Robin, Managing Director of the Edison Theatre at Washington University. In January, 2004, she had the pleasure of interpreting there for Kate Clinton. Glenace holds national certification from the Registry of Interpreters for the Deaf (RID). She currently holds the position of RID Region IV Representative, which represents 14 states and three provinces in Canada. She has interpreted in many places in the U.S. and also in Japan and Europe.

Glenace has attended the GALA choral festivals since 1989. Her initiation to GALA was in Seattle interpreting for the Denver Women's Chorus. Later festivals took her to Denver, Tampa, San Jose and most recently to Montreal with the Gateway Men's Chorus. She has interpreted for Bruce Villanche, John Kerry, Maya Angelou, Nell Carter and President George W. Bush. Jeffrey Maynard and the New York City gay Men's Chorus invited Glenace to perform with them in Carnegie Hall in December of 2001 and in June of 2002 with Armistead Maupin. She recently had the honor of interpreting for Ann Hampton Callaway at the Pageant, and Stephen Schwartz, Liz Callaway and Scott Coulter at the Edison Theatre at Washington University. Glenace loves sharing the poetry, inspiration and laughter of music through sign language with the deaf and hearing communities. She is also proud to mention Lloyd, her husband of 37 years, her daughter, son-in-law and two grand-daughters.



### *Set Designer - R. E. Dix*

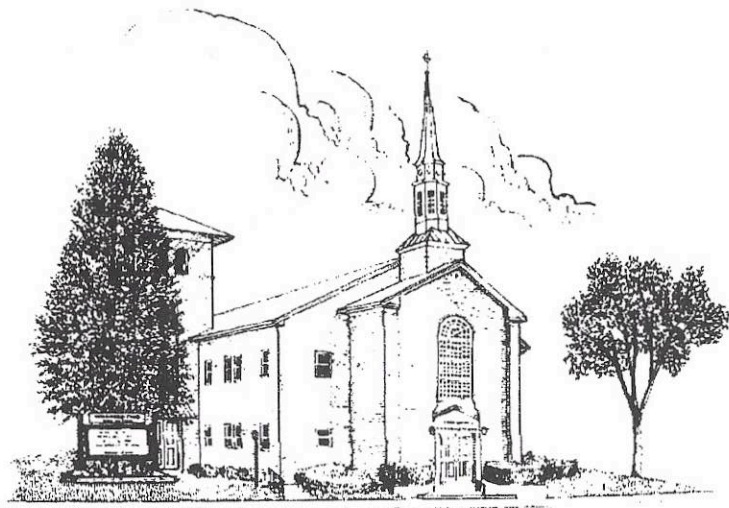
Dix has been a middle school art teacher in the metro St. Louis area for the past 16 years. She currently serves as Technical Director for the District's high school drama department by helping students learn to design and construct scenery for theatrical productions. Dix holds a B.A. in Studio Art with an emphasis in art education from SIUE. In 1995, she received a MAT in Instructional Media Technology from Webster University. Dix became involved with CHARIS through her friends and has enjoyed her association with the chorus.

### *Accompanist - Susan McIntosh*

Susan has been making music for many years, with her voice and on the piano. She has accompanied soloists and small ensembles in the St. Louis area, and is now proud to be in her fourth season as the principal accompanist for CHARIS. She also enjoys singing with her three girls and plans to make beautiful music for many years with her partner, Dayna Deck.



*Love that Groovin' Charis!*



**IMMANUEL CONGREGATIONAL CHURCH**

*A United Church of Christ*  
The Church That Welcomes You!

**Proud Home of CHARIS  
THE ST. LOUIS WOMEN'S CHORUS**



**Immanuel's Coffee House**  
2<sup>nd</sup> Saturday each month  
Featuring local singers & songwriters

3460 Jamieson Ave  
(four blocks South of Hwy. 44)

314-645-8956

[www.immanuelwelcomesyou.org](http://www.immanuelwelcomesyou.org)

*Who We Are*

CHARIS is a lesbian chorus open to all women. We differ in age, size, ethnic background, sexual orientation and abilities but we share a goal to seek musical excellence, voice messages of social justice, and create a fun and supportive place for all women. We are a non-auditioned chorus.

*Membership Information*

CHARIS extends an open invitation for membership. Rehearsals are currently held Tuesday nights from 7 to 9:30 at Immanuel United Church of Christ, 3460 Jamieson Ave. If you are interested in membership information or attending a rehearsal, please call (314) 852-5318.

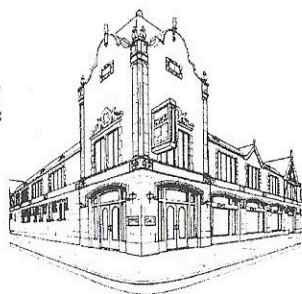
*Board of Directors*

Sharon Smith, President  
Candice Freeman, Vice President  
(\*) Marilyn Stavenger, Recording Secretary  
Kathy Duncan, Treasurer  
Kim Powlishta  
Chatanunya Rawles  
Pat Henry  
Linda Clark  
Felicia Scott  
(\*) Nancy Folk  
(\*) Bill Byrd  
(\*) Katrina Pfeiffer

(\*) Non-singing directors

**CWE**  
**CENTRAL WEST END BANK**  
 A Federal Savings Bank

Internet Banking  
 Available Soon



Now in our 26<sup>th</sup> Year  
 1979-2005

415 DeBaliviere  
 314-367-8800

10 Maryland Plaza  
 314-367-8333

[WWW.CWE-BANK.COM](http://WWW.CWE-BANK.COM)

FDIC Insured



## The Leslie Maclean Trio

Announces the Release of Their New CD

### *That's Time Enough*



This CD includes the critically acclaimed Wizard of Oz Medley, **TO OZ? TO OZ!**

"The Leslie Maclean Trio is a wonderful band of talented musicians...." James Oerding, *West End Word*, Oct. 20-26, 2004 Issue

"Maclean is truly talented. I highly recommend this CD to anyone who enjoys jazz piano. -Kathy Feist Vescovi, October/November 2004 Issue, *JAM Magazine*, Kansas City

The CD is available at Webster Records, Borders, and at Amazon.com. For more information visit [www.lesliemacleantrio.com](http://www.lesliemacleantrio.com), or call 636-405-3064

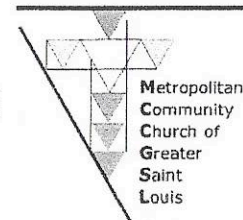
© 2005 LMT Enterprises, LLC

MCC-GSL  
 is happy to be  
**"In The Groove"**  
 with CHARIS

Metropolitan  
 Community Church  
 of Greater St. Louis  
 welcomes all CHARIS  
 supporters to **"groove"**  
 with God

Sundays at 9:30 or 11:30 am  
 5000 Washington Place

314.361.3221  
[www.mccgsl.org](http://www.mccgsl.org)





## **CHARIS, The St. Louis Women's Chorus**

### ***"In The Groove"***

#### **Set I:**

##### **Blue Bayou**

By: Roy Orbison, Joe Melson / Arr: Mac Huff

*Solo: Jane Clark*

##### **Chapel of Love**

By: Phil Spector, Ellie Greenwich, Jeff Barry / Arr: Roger Emerson

##### **It's My Party**

By: Herb Wiener, John Gluck, Wally Gold / Arr: Jeff Funk

*Small Group: Susanna Roe, Linda Clark, Sonja Sanae Furiya, Carolyn Stahlhut, Kathy Duncan, Denise Peterson*

##### **Shoop Shoop Song**

By: Rudy Clark / Arr: Roger Emerson

*Solo: Sara Downing*

*Small Group: Jayme Christenson, Nancy Downing, Kendra Henry, Sharon Smith, Terri Velasco, Kris'ten Wozniak*

##### **Baby I'm in Love**

Supremes Medley

Arr: Kirby Shaw

*Solo: Deb Salls*

##### **The Rose**

By: Amanda McBroom / Arr: Kirby Shaw

*Solo: Pat Henry*

##### **New York State of Mind**

By: Billy Joel / Arr: Steve Zegree

*Solo: Julie Lynch*

#### **I Will Survive**

By: Frederick T. Perren, Dino Tekario

*Soloists: Jane Clark, Felicia Scott*

#### **Set II:**

##### **I Heard it Through the Grapevine**

By: Norman Whitfield, Barrett Strong

*Solo: Sharon Spurlock*

*Small Group: Sonja Sanae Furiya, Colleen Gilmore, Julie Lynch, Dina Young, Susan McIntosh*

##### **Out Here On My Own**

By: Michael and Lesley Gore

*Solo: Susan McIntosh*

##### **I'm So Excited**

By: Trevor Lawrence, June Pointer, Ruth Pointer, Anita

Pointer / Arr: Juliet Jackson, Cindy Sohn

*Small Group: Jane Clark, Colleen Gilmore, Loretta Haggard, Susan McIntosh, Sharon Spurlock, Dina Young*

##### **Sister**

By: Cris Williamson / Arr: Jane Ramseyer Miller

##### **Harriet Tubman**

By: Walter Robinson / Arr: John Coates, Jr.

##### **Perfect Night**

By: Jeff Langley, Holly Near / Arr: J. David Moore

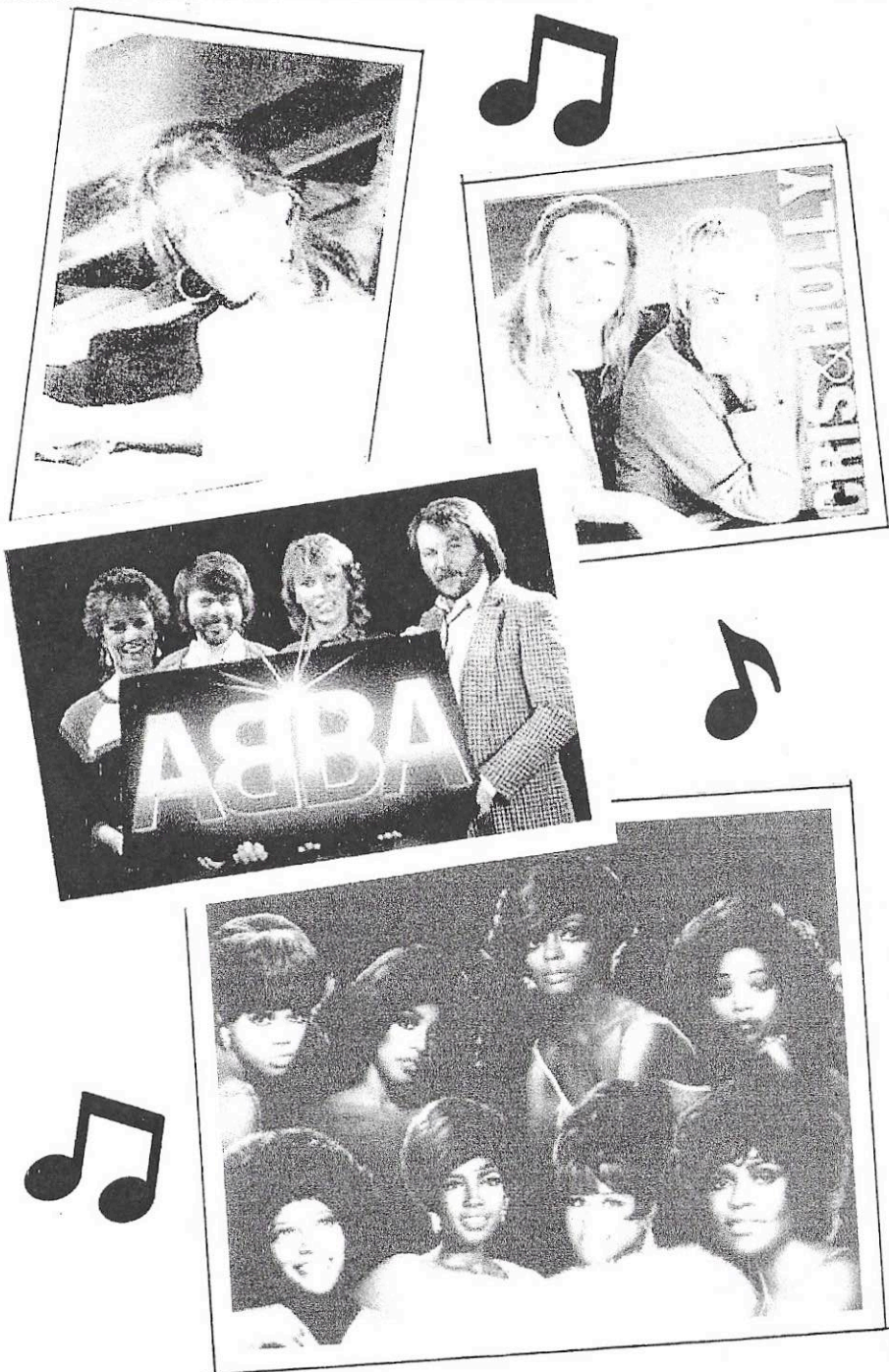
##### **Let The River Run**

By: Carly Simon / Arr: J. David Moore

##### **ABBA Medley**

Arr: Steve Milloy





## CHARIS

### The St. Louis Women's Chorus

*Aric Henson, Artistic Director*

*Susan McIntosh, Accompanist*

*Glenace Humphrey, Sign Language Artist*

#### Sopranos

Jane Clark

Deb Salls

Nancy Downing

Pat Henry

Colleen Gilmore

Penny Frame

Kathy Duncan

Summer Skinner

Sonja Sanae Furiya

Linda Clark

Julie Lynch

Sara Downing

Leigh Noland

Loretta Haggard

Kendra Ellen Henry

Felicia Scott

Kris'ten Wozniak

#### Altos

Barbara Gilchrist

Charlotte Ellis

Dina Young

Sharon Smith

Lesley Proud

Denise Peterson

Sharon Opp

Chatanunya Rawles

Kim Powlishta

Suzy Davis

Carolyn Stahlhut

Jayne Christenson

Sharon Spurlock

Susanna Roe

Georgia Johnston

Terri Velasco

Candice Freeman

Nancy Phillips

#### Musicians

Guitar: Gwen-Marie Lerch

Bass: C.B. Bonham

Drums: Andie Millaway



### *Kathy Morris - Sarah (the mother)*

Kathy Morris began her theatrical career at the age of three, tap dancing in front of the family fireplace. She got rave reviews in the living room and wowed them in the kitchen, and a Jewish ham was born. Many thought Kathy had reached her peak when she played Minnie Fay in the middle school production of "Hello Dolly." After a long hiatus, however, Kathy resumed her performing career in 2000, and has received critical acclaim as the emcee for Band Together. She also enjoys being a vocalist and pianist with the local pop/jazz/alternative group "Mrs. Wiggins!" Having the sense not to quit her day job, Kathy is a faculty member at Saint Louis University School of Medicine. She resides in St. Louis City with her partner, Gwen-Marie Lerch and their pet menagerie.

### *Ronja Furiya - Olivia (the daughter)*

Ronja is a senior at Webster Groves High School. She is a member and officer of Thespian Troupe 191 at WGHS, and recently appeared in the school's production of "Arsenic and Old Lace." Beyond acting, Ronja has written and directed a one-act play, "Smile... Tomorrow Will be Worse," performed at WGHS. She also serves as arts and entertainment reviewer for the school newspaper. Ronja is the real-life daughter of proud CHARIS member, Sonja Furiya. Ronja's future plans include moving to New York in the fall to attend college and pursuing a career as a writer.

### CHAMBER JAZZ

Patrick Welch  
314-961-0255

## Symmetry

Wendy Bruner & Melinda Ohlemiller

(314) 997-0460

[symmetrystl@yahoo.com](mailto:symmetrystl@yahoo.com)

*folk, fun, harmony, and more...*



Phone: 314-721-6251  
Fax: 314-721-7513  
420 N Skinker @ Kingsbury  
St. Louis, MO 63130  
hours by Appointment

- |                     |                         |
|---------------------|-------------------------|
| ▼ Internal Medicine | ▼ Dentistry             |
| ▼ Acupuncture       | ▼ Grooming              |
| ▼ Dermatology       | ▼ Behavior Consultation |

Stephen A. Brammeier, D.V.M.  
[www.kingsbury.petplace.com](http://www.kingsbury.petplace.com)



## *Acknowledgements*

CHARIS gratefully acknowledges the help of the following persons in the preparation of this concert, as well as the generosity of the Regional Arts Council

Production Chair: Candice Freeman

Stage Manager: Mike Eppenberger

Sound: Felicia Scott

Set Design/Lighting: R. E. Dix

Choreographer: Sonja Sanae Furyia

Venue Liaison: Kendra Henry

Property Mistresses: Pat Henry, Dina Young

Stagehands: K.H., Pat Moran

CHARIS shirt designer: Colleen Moran

Scriptwriter: Dina Young

Set Crew:

R.E. Dix

Pat Henry

Pat Moran

Sharon Smith

Sara Downing

Georgia Johnston

Sharon Opp

Nadine Varner

Linda Clark

Rebecca Barr

Dina Young

Colleen Gilmore

Kendra Henry

Loretta Haggard

Performance Committee: Pat Henry, Linda Clark, Aric Henson,

Felicia Scott, Sharon Spurlock, Dina Young

Public Relations: Georgia Johnston, Linda Clark

Program Book: Linda Clark

Grant Writer: Sharon Spurlock

Volunteers: Julianne Smutz

Katrina Pfeiffer

Lesa Hall

Jeanne Lichtenwalner

Susie

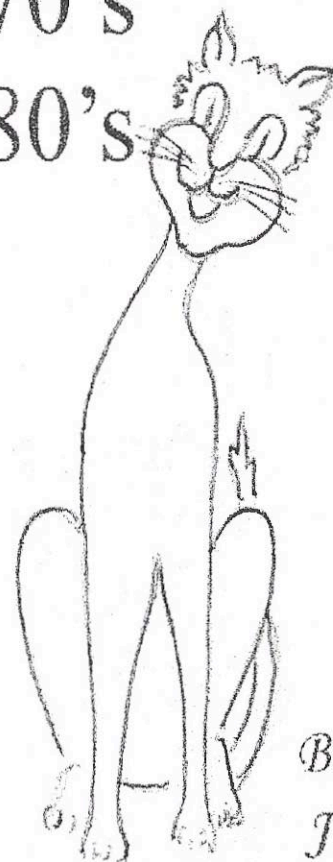
Sheila Muhlbaier

## GROOVIN' WITH CHARIS

60's

70's

80's



*Best Wishes,  
Judy Miniace*



## ***FRIENDS OF CHARIS***

We would like to thank the following people for gifts  
(including in-kind donations) and general support made  
during the past twelve months

Jane Clark  
Linda Clark  
Lloyd Humphrey  
Sharon Spurlock  
Betty T. Spurlock  
Betty Cross & Kit Klein  
Jane Levdansky & Joan Lafferty  
Cynthia Stranis  
Claire Wyneken  
Susan M. Commons  
B.J. McGough & Karen Hagrup  
- in honor of our mothers  
Marilyn Turner  
Merry Keller  
Marge Van Diggelen  
Peg Atkins  
Martha Ficklen & Nan Sweet  
Kathy Morris & Gwen-Marie Lerch  
Cindy Fulton & Sarah Colony  
Jerry Woods  
Susan Lukwago  
David Bates  
Colleen Gilmore & Loretta Haggard  
Katherine Bish  
Terri Phillipi  
Jan Edmiston

### **I Want To Be a Friend Of CHARIS**

Name \_\_\_\_\_

Address \_\_\_\_\_

City \_\_\_\_\_ State \_\_\_\_\_ Zip \_\_\_\_\_

Phone \_\_\_\_\_ Email \_\_\_\_\_

☐ Do not publish my name

My donation is in memory/honor of:

\_\_\_\_\_ \$25 \_\_\_\_\_ \$35 \_\_\_\_\_ \$50 \_\_\_\_\_ \$100 \_\_\_\_\_ Other

**CHARIS**

**3460 Jamieson Ave/ St. Louis, MO 63139**

Now Accepting New Patients



2340 Hampton Ave.  
St. Louis, MO 63139  
(314) 647-2200


**David J. Prelutsky, M.D.**  
Internal Medicine

**Catherine Williamson, F.N.P.**  
Nurse Practitioner



**Band Together**  
PRESENTS

# TOON TIME



THE FOURTH ANNUAL POPS CONCERT  
**Saturday, May 21, 2005 - 8 p.m.**  
E. Desmond Lee Concert Hall at Community Music School of Webster University  
560 Trinity Avenue at the western end of the University City Loop  
**ADMISSION FREE - DONATIONS ACCEPTED**  
[www.bandtogethersti.com](http://www.bandtogethersti.com)

## *Upcoming CHARIS Events*

- |                |  |
|----------------|--|
| May 3          | Party at Jazz at The Bistro, 7pm   |
| May 14         | Planning Retreat, 9-2; location TBA  |
| May 22         | Sing at First Congregational Church, Webster Groves, for Afternoon Concert Series, 3pm |
| June 7         | Rehearsals begin for PrideFest   |
| June 5         | Immanuel UCC benefit concert, 3pm  |
| June 26        | Sing at PrideFest, Tower Grove Park; time TBD  |
| Sept. 1-4      | GALA Choruses Annual Concert, Kansas City, MO  |
| Nov. 19        | Fall concert, "Songs of Change" at the History Museum, Forest Park                     |
| April 29, 2006 | Spring concert saluting the music of Broadway, Shrewsbury Community Center             |

Please check our website at [www.charischorus.org](http://www.charischorus.org) for additional dates and information



P.O. Box 31700  
St. Louis, MO 63131-1700  
(314) 995-5477

[www.goldenrescuelouis.org](http://www.goldenrescuelouis.org)

**GOLDEN RETRIEVER RESCUE**



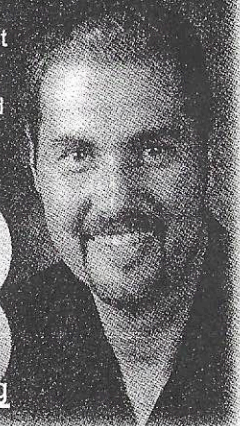
# Has Finding A Career Got You Stuck, Stalled and Confused?

Activ:8 Career Coaching works closely with you to put into action a personalized strategic plan that will be essential to your career success.

Set up an appointment to have a CAP Session – Career Action Plan – and identify the root cause of your career problem.

Or, perhaps you know someone who needs career direction. An Activ:8 Gift Certificate could be the best gift you can give, one that changes a life.

Use the certificate below, visit us online or call David Hults, Professional Career Coach, to find out more.



**activ8**  
activ:8 career coaching

www.activ8careers.com

314 966-3888

I am interested in a:

- ☐ Career Action Plan Session or a gift certificate
- ☐ FREE Special Report – Learn how to create a "Special Report" that will outperform your resume.
- ☐ FREE Newsletter Subscription – Learn valuable career tips with each issue.

Name \_\_\_\_\_

Address \_\_\_\_\_

City \_\_\_\_\_ State \_\_\_\_\_ Zip \_\_\_\_\_

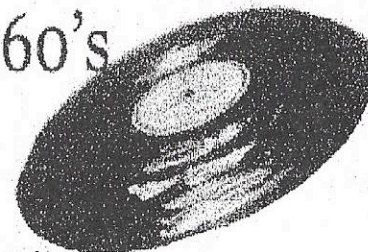
Phone \_\_\_\_\_

E-Mail Address \_\_\_\_\_

Mail to: David Hults, activ:8 career coaching, P.O.Box 220292, St. Louis, MO 63122

BEST WISHES

60's



CHARIS

IN THE GROOVE

&

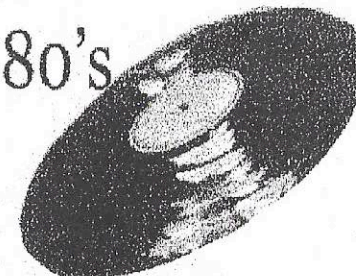
MAKING EVERYONE FEEL

GROOVEEEEEEEEEEEEEEE

70's

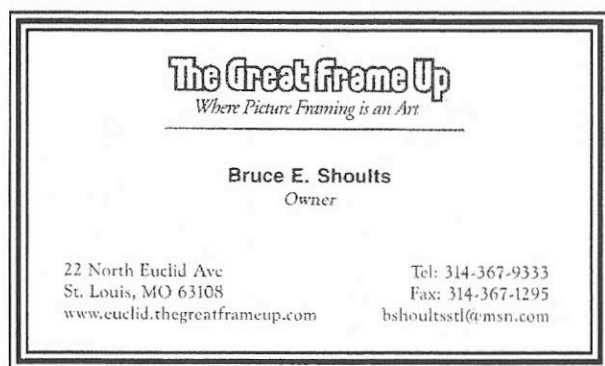
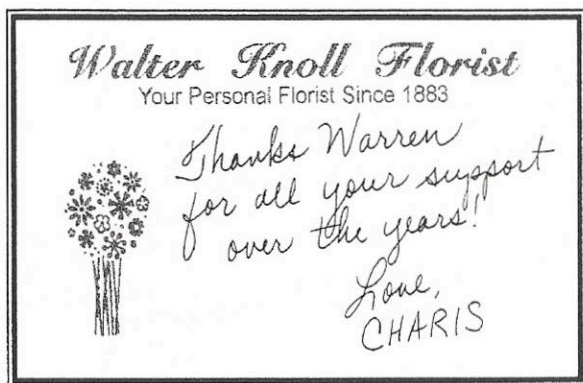


80's



....Ken Curtis





### Concert Etiquette

As a courtesy to the performers and audience members we ask that you silence all electronic devices such as cellular phones, pagers, and digital watches before the concert begins.

Recordings and flash photography of this performance are not permitted.

Enjoy the concert and thank you for your support of  
**CHARIS!**

May 21 - June 26 2005

**RIGOLETTO**

**GLORIANA**

**ROMEO AND JULIET** | **BEAUTY AND THE BEAST**

**TICKETS | 314.961.0644**

Seats & Previews at [experienceopera.org](http://experienceopera.org)

**THE 30<sup>TH</sup> SEASON**

**YOU'LL ROOT FOR THE SOCIOPATHIC AVENGING CREEP IN THE FUNNY HAT.**

**OPERA THEATRE OF SAINT LOUIS**

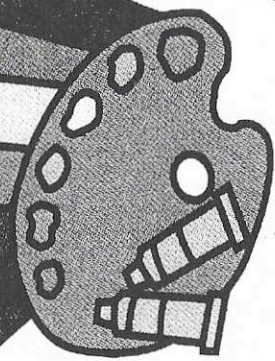
Join us for another brilliant season. Don't wait! Seats are limited. Call today for Early Advantage and Newcomer Discounts!



# Gateway Men's Chorus



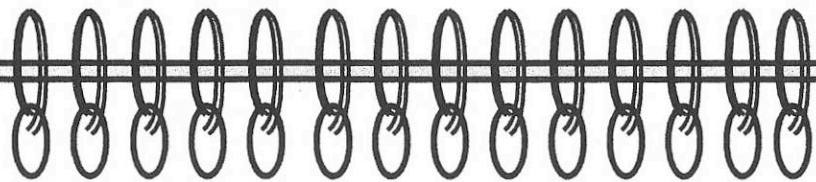
## Colors of Pride



We are proud to feature  
Special Guest Artist Charles  
Houska who will "paint the music"  
on stage during the concert.  
The work of art to be auctioned off at the  
end of the concert!

For more information about this amazing artist  
go to [www.houska.com](http://www.houska.com) or visit his gallery at 4728  
McPherson Ave, St. Louis.

June 24 & 25, 2005  
8 p.m.  
Edison Theatre



## Notes



# *Notes*

