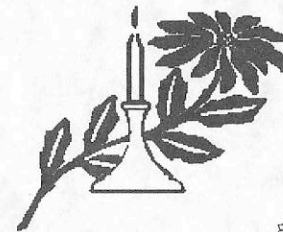


December 1995

CHARIS

*presents*

**Worldwide Winter**  
*A Celebration of Light*



Saturday, December 2, 1995  
Ethical Society

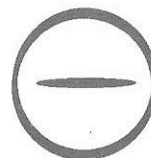
## CHARIS WELCOMES YOU

### CHARIS

Our name comes from the Greek word meaning grace that was used to describe women's culture on the Isle of Lesbos. Charis encompasses all women's arts including music, visual art, dance, poetry, philosophy and romantic love. We sing together in the spirit of Charis, honoring women's artistic culture.

### CHARIS SYMBOL

The CHARIS symbol is derived from an ancient symbol for women, and represents more than just the members of our chorus. In written music, when a half note or whole note falls on one of the lines of the staff, this symbol is created. So the CHARIS symbol not only represents the women who make up our chorus, but also our reason for coming together...our music.



### OUR MISSION

We are an all-woman community chorus, striving toward musical excellence through the education and growth of our members, performing a variety of musical styles and messages, seeking to represent the diversity and talents of lesbian and non-lesbian women in the St. Louis community, enlightened by the joy of singing.

### WELCOME

Be a part of CHARIS and help us shape our future. Even if you don't want to sing, CHARIS always needs volunteers to help organize and serve on committees. Practices are Tuesdays at 7:00 p.m. at Centenary Methodist Church, 16th and Olive. Dues are \$15 per trimester. Scholarships are available. For more information, call 726-0250.

CHARIS is a member of Sister Singers and GALA Choruses.



## FROM THE DIRECTORS

Beginning with our *Voices and Visions* "best of" concert on September 1 performed before a near sell-out crowd at the St. Louis Symphony Community Music School (CASA), continuing with our *Worldwide Winter: Celebration of Light*, followed by our second annual *Women In History* concert on March 30, and culminating in our June send-off concert and our performance in the *GALA V Choral Festival* in Tampa, this concert season proves to be our most exciting and challenging yet! Our efforts, along with those of the Gateway Men's Chorus, in bringing the *GALA Leadership Conference* to St. Louis in September paid off by calling attention to the musical excellence to be found in the midwest. The innumerable telephone calls, letters, and E-mails that Charis has since received are congratulations due to our members, as well as our financial supporters, volunteers, and to you, our audience.

Tonight's concert features musical celebrations of several winter-time, and specifically December-time, events. The unifying theme of light ties our concert segments, interwoven by presentations about each event by individuals from the respective communities involved. We warmly welcome Dana Eilers (Winter Solstice), Annette Harrison (Hannukah), Jane Clark (Advent), and Jabari Asim (KWANZAA) to our stage. Their widely diverse styles of presentation will remind us of the rich cultural diversity of our world, while the interesting similarities in theme will certainly enrich us to the possibilities of shared wisdom and truth.

Several of our concert pieces deserve mention. Many thanks go to Gregory Taft Gettys, who has shared his (and Jabari's) uplifting composition of *KWANZAA Song* with Charis and joins us for this evening's performance. For a "first", this evening Charis breaks headlong out of the secular realm to perform SSAA renditions of Randall Thompson's *Alleluia* and John Rutter's *Shepherd's Pipe Carol*. Charis is also performing the a cappella work *And Back Again* by Gwen Frostic and Dede Duson, a favored team of ours, this time in a light, lilting melody calling us to be mindful of the "great symphony of life".

We make a special welcome to our guest performers this evening, JOIA. They have been a pleasure to work with and their rhythms will enrich your concert experience! In reference to their concert set, someone asked, "Just percussion?" The answer is, "Definitely not *JUST PERCUSSION*!" They'll knock your ear muffs off. Feel free to, well, wiggle...or tap your foot...or, hey, even dance!

And don't forget to mark your calendars now for our March 30, 1996 *Women In History* Concert!

Welcome!

Juliet Jackson  
Cindy Sohn

## CHARIS PRESENTS

### Worldwide Winter: A Celebration of Light

Saturday, December 2nd, 1995 - The Ethical Society

Juliet Jackson & Cindy Sohn, Co-Directors  
Mary Akers, Assistant Director  
Kathleen Haydon, Accompanist  
Glenace Humphrey, Sign Language Artist

#### SOPRANO I

Cindy Fedders  
\*Juliet Jackson  
M.S. Phillips

#### SOPRANO II

Jane V. Clark  
Cary Colman  
Darlene Dougherty  
Colleen Gilmore  
\*Kim Gruner  
Marti Frumhoff  
Anonymous  
Phyllis E. Holland  
Julie Lynch  
Rachel Philippone  
Lynn Placek  
Linda Shubow  
Vicky Stricklin

\* Section Leaders

#### ALTO I

Dot Bailey  
Chris Chew  
Suzanne N. Cornell  
Brenda Domingue  
\*Loretta Haggard  
Jill Jean  
Karen Kowal  
Elaine Lopez  
Kay Schmitt  
Sharon Spurlock  
Nadine Varner

#### ALTO II

Linda Agnew  
\*Mary Akers  
Pat Bozdech  
Joan Brackmann  
Jane E. Levdansky  
Lynn Mark  
Sarah Merriman  
Deb Webber  
Dina Young

# MpKaBe's

coffee house

3606 ARSENAL at GRAND

ST. LOUIS, MO 63116

865-2009

HOURS: TUES-FRI ..... 5PM-1AM

SAT & SUN .... 11AM-1AM

CLOSED MONDAY

**LATTES • COFFEES • SANDWICHES • DESSERTS • MUSIC**

**MERCANTILE  
BANK**  
Member FDIC

Office Hours By Appointment

Phone: (314) 647-4120



**MARY P. GANLEY, D.C.**

*Chiropractor*

3336 Watson Road

St. Louis, MO 63139

## CYCLE 5 BOOKKEEPING

PERSONALIZED COMPUTER ACCOUNTING  
SERVICES FOR THE SELF-EMPLOYED  
AND SMALL BUSINESSES

COMPLETE TAX RETURN SERVICE

**GARY L. JOHNSON**

3904 Laclede Ave.  
St. Louis, MO 63108

(314) 652-5285  
fax (314) 652-4283



**Faye E. Licata, D.M.D., P.C.**

111 Hilltown Village Center, Suite 200

Chesterfield, MO 63011

(314) 532-2101

Hours By Appointment

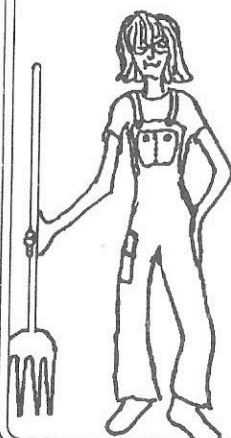


Ellen Tetlow MSW, MAEd., LCSW

feminist therapy  
for the lesbian community

individual, group, and couples counseling

214 South Meramec ▼ Clayton, Missouri 63105  
314/863-6303



*Plantasia, Inc. is pleased to announce its  
latest service "Landscape-It-Yourself"®*

Work hand-in-hand with a landscape designer to create your  
own professional landscape. Learn to operate equipment,  
prepare soil and properly plant bushes, trees, perennials, etc.  
Call 961-2266 for more information.

PLANTASJA

"For A Harmonious Blend  
of Landscape With Lifestyle."

Landscape Design,  
Consultation and  
Landscape-It-Yourself

**961-2266**

*Karlene McAllister*

*Travel*

PREFERRED ^ SOLUTIONS

*Free Ticket Delivery*

(800) 921-9976 • (314) 921-9700

Fax (314) 921-8757

*James Peregrin*

*Brian Fenquay*

## WE BUY BOOKS

**OVER 130,000 GOOD QUALITY  
BOOKS IN GREAT CONDITION  
AT EXCELLENT PRICES**

**A COLLECTOR'S BOOKSHOP**

**6275 DELMAR  
UNIVERSITY CITY  
IN THE  
"DELMAR LOOP"**

**MON. THRU THUR. 9-7**

**FRI. & SAT. 9-9**

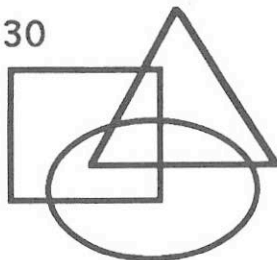
**SUN. 9-5**

**VISIT "THE LOOP" DEC. 2, 1995  
FOR THE ANNUAL  
HOLIDAY WALK**

**SEASONS GREETINGS**

# The Voice Studio

7339 Colgate  
St. Louis, Missouri 63130  
(314) 726-0250



*"Voice Coaching and  
Voice Recovery programs for  
Singers and Speakers"*

**Juliet Jackson**

Voice Teacher/Vocal Coach  
Classical, Jazz, Pop, Rock

**Cindy Sohn**

Licensed Speech Pathologist  
Specializing in Professional Voice

## STORYTELLERS

Dana D. Eilers is an author, speaker, and teacher whose published works have appeared in *Sage Woman*, *GoodWitch Stories*, and *The Pathfinder*. She is the co-founder of a spiritual circle known as The Occasional Coven and conducts a monthly "pagan town meeting" at Mystic Valley. Dana has been a featured speaker and creator of ritual for such events as CraftWise Midwest and Magickal Weekend.

Annette Harrison is an educator, author and storyteller. She shares her stories in keynotes, workshops and performances throughout the U.S. She is the author of two books on storytelling, has stories in two new storytelling anthologies and has produced three cassette tapes. Annette is co-host of "GATORTALES" a children's weekly television program on CBS.

Jane V. Clark is an ordained clergywoman currently serving as Senior Pastor of First United Methodist Church in Washington, Missouri. A co-founder of CHARIS and President for the past two years, Jane is committed to singing songs of justice, to relationships with her CHARIS sisters, and to her grandson Zane.

G. Taft Gettys is a pianist, singer, actor, composer and church choir director. He has served as assistant conductor of the National Touring Company of "The Wiz," and as composer and musical director for the Muny Student Theater's production of "It Affects Us All". He has collaborated with Jabari Asim on projects such as "Testify" and "New Blood Symphony" (at the national black arts festival), "Echoes of Blackness" and "Didn't It Rain."

Jabari Asim, an arts and entertainment writer for the Post-Dispatch's GET OUT magazine, is a playwright, essayist and editor whose works have been performed by TNT, Pamoja Theatre Workshop and the Muny Student Theater. He serves as editor or co-editor of several publications including *Drumvoices Review*, *Young Tongues* and *Eyeball*. His published essays include a contribution to the forthcoming *Soulfires: Young Black Men on Love and Violence*.

## SPECIAL THANKS

CHARIS wishes to thank Interiors in Green for the lovely flowers decorating the stage tonight and to extend a special thank you to Blue Moon Coffeehouse for all the support you have extended to the chorus in the past. We are sorry to see you close your doors.



"With the support of the Regional Arts Commission"

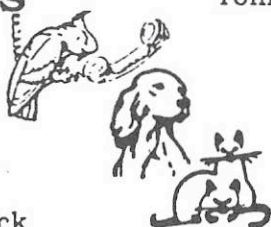


## PET CONNECTIONS



2212 S. Vandeventer  
**773-PETS**  
Grooming Daily by Mick

Lewis  
Tom



HAPPY HOLIDAYS

THANK YOU

CHARIS

FOR THE GIFT OF

MUSIC

TOUCH for NU-LIFE

*Therapeutic Massage  
for Women*



**DOLORES ANSELMANT**

*Member of American Massage Therapy Association*

Certified Massage Therapist  
By Appointment

(314) 225-9970

CUSTOM DATABASE CONSTRUCTION  
DATABASE CONSULTING

**L.E.H. Consulting**

Lloyd E. Humphrey  
1221 Orchard Lakes Drive  
St. Louis, Mo. 63146-5132 (314) 993-1062



**Metropolitan  
Community  
Church of  
Living Faith**

**A Community of  
Celebration, Support,  
and Service**

The Reverend Kenneth E.  
Pilot, Pastor

*Worshipping at:*  
The First Congregational Church  
of St. Louis  
6501 Wydown, Clayton, MO 63105  
Sundays at 5:00 p.m.  
Telephone (314) 726-2855

For a daily uplifting & affirming  
message, call the Prayer Line:  
453-8403

*Sharing The Love Of God  
As It Was Meant To Be.*

靈  
氣

**REIKI**

*The Usui System*

**LYNN PLACEK**  
**(314) 843-3505**  
**ST. LOUIS, MO.**



771-1948

Jane L. Anton, Ph.D.

PSYCHOLOGIST

2256 South 39th St.  
St. Louis, MO 63110

Specializing in Counseling  
and Therapy with Women,  
Relationships and Families

## KINGSBURY ANIMAL HOSPITAL

STEPHEN A. BRAMMEIER, D.V.M.



CONNIE HANDLOVITS, D.V.M.

\*  
420 N. SKINKER  
ST. LOUIS, MO

\*  
314-721-6251

MON-THURS 9-6:30 • FRI 9-4:30 • SAT 10-2

## GUEST ARTIST

### JOIA

JOIA is a samba percussion group. Their goal is to "empower the people of the world to dance in rhythm as one." They believe "that music is a healing power for all creation" and are "dedicated to exposing all people to high energy, life celebrating rhythms of Brazil, Africa and the world." They ask their audiences to "come and be one in the rhythm of our drums...to celebrate being alive!"

Some of their instruments are the Surdo (the bass drum, the heart beat of samba); Tamborim (a little high-pitched hand-held drum, played with a stick); Repenique (a small aluminum drum, plays leading parts); Caixa (a snare drum); Pandeiro (Brazilian equivalent of the tamborine); Agogo (two bells attached to each other); and Ganza (a shaker).

JOIA seems to play anywhere and everywhere. Most recent appearances have been at the University City Loop Parade, the Laumeier Park "Brazil Fest", and at the first Rams game in the new TransWorld Dome, Nov. 12th. (they welcomed the fans by playing at the entrance gates.) —and they have just recorded a CD which includes selections such as "Rhumba", "Taiko", and "The Funk." Information on the CD is available from Bradley Drury at 727-9589.

In the words of one of their members the band is very much like a family. "If you look at the CD credits you won't be able to tell who is the band leader, who the music writer, and who wasn't even there at the time of recording. This is how the band approaches every affair, like a family, we come to it together. ..when we get together to play or compose or practice, the love and energy that comes out is just dazzling..it comes out in a fiery, flashy celebration of each other, music, happiness and life..."

## INTRODUCING

### CHARIS' new accompanist

**Kathleen Haydon**

Kathleen is a 1991 graduate of Washington University with a degree in Music - Piano Performance. For the past three years she has worked for Webster Groves High School as their staff accompanist where she plays for five choirs, including a show choir, and coaches individual students and small vocal ensembles. She has performed in pit orchestras for musicals, accompanied ballet classes at Washington University and is also a private piano teacher.



## CONCERT PROGRAM

### Worldwide Winter: A Celebration of Light

With Storytellers

Dana Eilers, Annette Harrison, Jane V. Clark  
G. Taft Gettys and Jabari Asim

#### Light the Light

Mark Brymer

#### And Back Again

*Words* Gwen Frostic

*Music* Dede Duson

#### One Candle Lights the Way

Sally K. Albrecht and Jay Althouse

*Soloist* Phyllis Holland

#### Beams of Gentle Light

*Words* Michael Frank and Dwight Holmes

*Music* Robert Evans Holmes

*Soloist* M.S. Phillips

#### Alleluia

Randall Thompson

#### Shepherd's Pipe Carol

John Rutter

*Soloist* Juliet Jackson

#### Namasté

Christine Korb

*Text* C.K. from Sanskrit

## CONCERT PROGRAM

#### Seven Principles

Bernice Johnson Reagon

*Soloists* Mary Akers, Chris Chew, Loretta Haggard  
and Dina Young

#### Kwanzaa Song

J. Asim and G. Taft Gettys

## Intermission

#### GUEST ARTIST

### JOIA

oooooooooooooooo

#### Deck the Halls (in 7/8)

Traditional

*Arrangement* James McKelvy

#### Sleigh Ride

*Words* Mitchell Parish

*Music* Leroy Anderson

*Arrangement* Holly Lynde

#### Storms in Africa

*Words* Roma Ryan

*Transcription* Jagg Groeg

*Music* Eithne Ni Bhraonain (Enya)

*Arrangement* Steve Milloy



**CHRISTINE CROSLEY, DVM**

*Compassionate care for our four-footed friends*

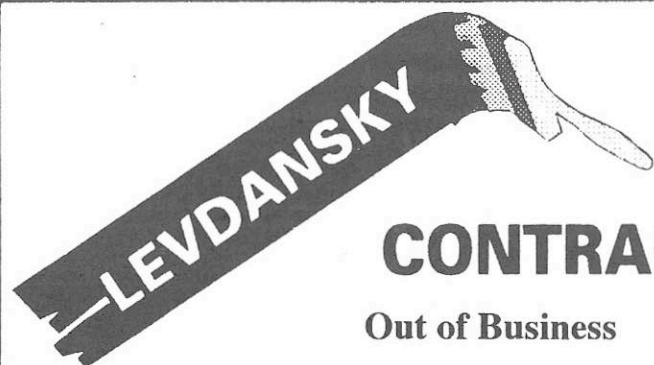
**RIEDEL ANIMAL HOSPITAL**

2615 S. Big Bend  
St. Louis, MO 63143

**Phone: 781-1738**

**TTY: 781-1702**

*Offering Holistic Therapies*



**CONTRACTING**

**Out of Business**

*Many thanks to my dear friends and customers who have supported and encouraged me over the years. I extend to you my deepest gratitude and appreciation for giving me the opportunity to serve you.*

*Jane*

**START TODAY.  
HELP WIPE OUT  
BAD DESIGN.  
CALL 361.7676.**

*Ask for Beth Gellman.*

**THIS AD WAS  
PAID FOR BY  
STAN GELLMAN  
GRAPHIC  
DESIGN, INC.**

Psychotherapy

314/367-2010

**Maxine Birdsong, MSW**

**Gary L. Hirshberg, MSW**

**Ann Velasco, MSW**

—◆—  
Licensed Clinical Social Workers

*Serving lesbians, gay men and people affected by HIV.*



# HANG YOUR HUSBAND

Or your Mother. Or your wife  
and kids. Anyone who merits a  
place on your wall. ♣ We'll frame  
your favorite artwork, posters, or  
snapshots at prices that won't leave  
you feeling mugged.

## ROULEAUX

GREAT FRAMING AT GREAT PRICES

4739 McPherson Avenue, CWE.  
314-454-1257

REIKI  
SWEDISH

STRUCTURAL  
INTEGRATION

*Catherine*

*Schmitt* C. M. T.

BY APPOINTMENT  
314-781-8505

MASSAGE THERAPIST  
AMTA CERTIFIED

# Dr. Margaret R. Duwe

Chiropractic Physician

Applied Kinesiology  
Acupuncture  
Nutrition

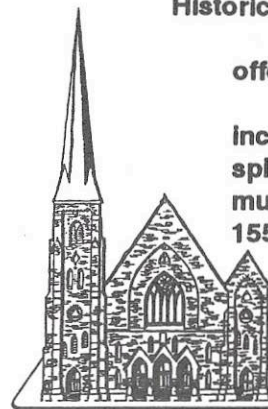
408 Caroline Kirkwood, Missouri 63122

821-6654

**Historic Centenary Church**

offering ..

**Inclusiveness and team spirit  
spirituality and fellowship  
music, and education and  
155 years of fresh perspective**



all under one roof at

**55 Plaza Square (16th & Olive)  
2 blocks North of Union Station  
421-3136**



**Thebeau-Kelly, Inc.**  
Registered Investment Advisor

**C. Alexah Strongheart**  
**(314) 432-2334**

Call to receive:  
a free booklet on Financial Planning  
a quarterly financial newsletter

## FRIENDS OF CHARIS

The women of CHARIS would like to thank  
our Friends for the 1995-1996 season.

Pat Alexander ( <i>Blanche's</i> )	Jackie McNeil & Elaine Lopez
Leo Arnold	William Merriman, Jr.
Nancy Bardgett	Mark Moloney
Nancy Bridges	( <i>in memory of Scott Galuteria</i> )
Patricia Browne	Joseph M. Ogier
Buron Buffkin	Kevin O'Toole
R.A. Cornell	( <i>in honor of Jeanne McCamish</i> )
( <i>in honor of Suzanne</i> )	Joe Ortmeyer
Nancy Daby	Paper & More
Barbara Davis	Pat Perdue
Cathy Durer & Susan Watkins	Stacy Portney
Charlotte Ellis	Jilaine Rosenthal
Cyndy Fels & Harriet Rosen	Dwayne & Karen Sell
Sharon L. Fitelson	Dave Simmons
Nancy R. Fortner	C. Samuel Sinnett
Julie Gram	Linda J. Smith & Sandy K. Gladney
Mr. & Mrs. Gale Haggard	Jean & Rob Snyder
Leigh Heller	Kathy Spivey
Gordon I. Herzog	Cheryl Stockton
Shelby Hileman	Michael Stortz & Guy Ranney
Donna & Frank Hinton	Dawn Stringfield
Anne G. Hogan	Amy Strongheart
( <i>in honor of Phyllis Hall</i> )	Michael Sutton
Gene & Allene Jackson	Carla Sweatt
Rhea Jacobs	Sage Taber & Becky Steckler & family
Mark Kalk & Mark Lammert	( <i>in honor of music in our lives</i> )
( <i>in honor of our Nephews &amp; Nieces</i> )	Diane Taylor & Judy Webb
Alice Kitchen & Georgia Binnington	Michael Tooley
Kim Kopff	Lisa Trost
Joan Lafferty & Jane Levdansky	Margaret Van Diggelew
( <i>in memory of Nellie Bishop</i> )	Richard V. Wagner
Terry Leet	Linda Harper Waters
Faye Licata, DMD & Paula Bauer	( <i>in honor of Women Navy Veterans</i> )
Karlene McAllister	Wellspring Foundation
Jeanne McCamish & Delores Anselment	Joelene Wentz
B.J. McGough	Joseph E. Wuller

## FRIENDS OF CHARIS

Become a member of **Friends of CHARIS** and be a part of our future! You can help with a tax-deductible contribution, or by volunteering to assist with performances, our newsletter *The Quarter Note*, fundraising and many other ways. Please join us in performing music by, for and about women.

# Yes!

I want to become a **Friend of CHARIS.**

Please fill out the information below and mail to:

### Friends of CHARIS

7339 Colgate  
St. Louis, MO 63130

Name(s) \_\_\_\_\_

Address \_\_\_\_\_

City \_\_\_\_\_ State \_\_\_\_\_ Zip \_\_\_\_\_

Telephone (Home) \_\_\_\_\_ (Work) \_\_\_\_\_

My gift is in honor of \_\_\_\_\_

My gift is in memory of \_\_\_\_\_

- ☐ Please contact me about volunteering.
- ☐ Please do not publish my name in the concert program.
- ☐ Please do not add me to the CHARIS mailing list.

Gift amount

- ☐ \$15
- ☐ \$25
- ☐ \$50
- ☐ \$100
- ☐ \$250
- ☐ \$500
- ☐ \$1000
- ☐ Other \$ \_\_\_\_\_



*Glenace B Humphrey*

1221 Orchard Lakes Dr.  
St. Louis, Mo. 63146-5132

(314) 993-1062



*Sign Language  
Interpreter*

CERTIFIED C.I. C.T.

## **Bette J. Weisman, MSW**

*Individual and Group Psychotherapy*

**(314) 432-1006**

777 S. New Ballas Rd  
Suite 129W  
St. Louis, MO 63141

11222 Tesson Ferry Rd  
Suite 201  
St. Louis, MO 63123

### PERSONAL LEGAL COUNSEL

## **Arlene Zarembka**

Attorney at Law

Estate Planning • Wills • Powers of Attorney • Probate  
Accident Cases • Personal Injury • Workers Compensation  
Social Security Disability • Insurance Issues  
Security Clearance Appeals

225 So. Meramec, Clayton Phone: (314) 726-6355

Come on in . . .

 **FRIENDS & LUVERS**  
3550 Gravois (at Grand) St. Louis, MO 63118  
**(314) 771-9405 • 24 hour info line •**  
Mon.—Sat. 10am—10pm Sun. Noon—7pm

### • YOUR ADULT HEADQUARTERS

We carry sensuous lingerie in sizes up to 4X for the ladies, garter belts, hosiery, gloves, tassles, g-strings, t-bars and more. The men have a fabulous selection of posing straps, boxers, thongs and comical wear. We also carry Emotion Lotion™, Edible Undies, Kama Sutra® products, safer sex condoms & more!

### • Adult Cakes



Our professionally baked and decorated cakes are out of this world. You can choose from many custom fillings and icings, not to mention shapes and candy pieces! The cost of the cake is determined by the sheet size and the cost of the candy parts you choose to put on. You will need to know how many people you intend to feed, and you will need to give us several days in order to have the cake produced, preferably a week. We also carry plenty of candy parts for you to produce your own creations.

### • Layaway



Our layaway plan is simple and easy. For a minimum of \$5 (or 10% of anything over \$50.00) you can hold your merchandise selections for up to two months. Layaway is free unless you cancel or don't pick up your selections, in which case your initial minimum deposit is forfeited.

### • Serious Toys, Leather, Handcuffs,



### Vibes

You won't find a better choice unless you go to the factory! Generic to realistic, plain to fancy, small to monstrous, we've got it all! P.S.: "Our Leather is Bound To Please You!"

 **STAND UP FOR  
WHAT YOU BELIEVE IN!**

**GAY, LESBIAN, BI, STRAIGHT, AMATEUR  
& OTHER VIDEO: JOIN OUR RENTAL  
CLUB AND YOUR SIGNIFICANT OTHER  
MAY JOIN WITH YOU FREE!**



David J. Prelutsky, M.D.

*Internal Medicine*

Simeon Prager, M.D.

*Internal Medicine*

Catherine Williamson, R.N.C.

*OB/GYN Nurse Practitioner*



2340 Hampton Avenue  
St. Louis, Missouri 63139  
(314) 647-2200

*Serving Our Community*

## CHARIS BOARD OF DIRECTORS

### OFFICERS

President	Jane V. Clark
Vice-President	Colleen Gilmore
Secretary	Cindy Fedders
Treasurer	Dina Young

### COMMITTEE CHAIRS

Finance	Sarah Merriman
Membership	Chris Chew
Performance	Juliet Jackson
Production	Linda Shubow
Publicity	Jane E. Levdansky

### MEMBER AT LARGE

Brenda Domingue

### FRIENDS OF CHARIS REPRESENTATIVE

Julie Lynch

## ACKNOWLEDGEMENTS

**TECHNICAL ASSISTANCE** Chris DeGracia, Lights

**HOUSE** Sarah Bridges, Nancy Bridges, Marti Frumhoff,  
Sage Taber, Becky Steckler, Judy Webb,  
Diane Taylor, Jil Rosenthal

Babysitting: Lily Dole and Wayne Duckworth

**TICKET OUTLETS** Left Bank Books, Our World Too

"With the support of the Regional Arts Commission"







## Town & Country TLC

Therapeutic Massage

Lucy Middleton

Specializing in  
Swedish & Accupressure Massage

671-1110

481-8800 ext 405

BY APPOINTMENT ONLY

*Nancy's*

## NATURAL FOODS

4474 Shaw Avenue  
(corner Shaw and Vandeventer)  
St. Louis, MO 63110  
(314) 771-7721

M-F 9a.m.-6p.m.  
Sat 9a.m.-5p.m.  
Sun 12p.m.-5p.m.



**ROCKHAVEN,**  
A Center for Holistic Living

7621 Rivermont Trail • House Springs, MO 63051

• (314) 671-3623 or 1(800) 820-6223

## MOTHER SOURCE NUTRITION

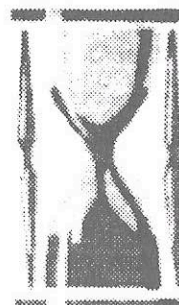
*Hope      Health      Freedom*

### **SUPERFOODS:**

Blue Green Algae  
Spirulina  
Acidophilus, Enzymes  
Anti-Oxidants & More

Alton, IL  
St. Louis, MO

(618) 462-4051  
(314) 973-1890



## FINANCIAL PLANNING CO.

Insurance Consultants

**J. TOM MILES, JR., CLU**  
President

Life Member Million Dollar Round Table

9666 Olive Blvd., #750 • St. Louis, Missouri 63132  
(314) 993-6100 Fax: (314) 993-0891 Auto: (314) 941-3047



## WEBSTER EYE CARE

**Dr. Gail Doell    Dr. Lesa Klein**

(314) 962-7580

7961 BIG BEND BLVD.

WEBSTER GROVES, MO

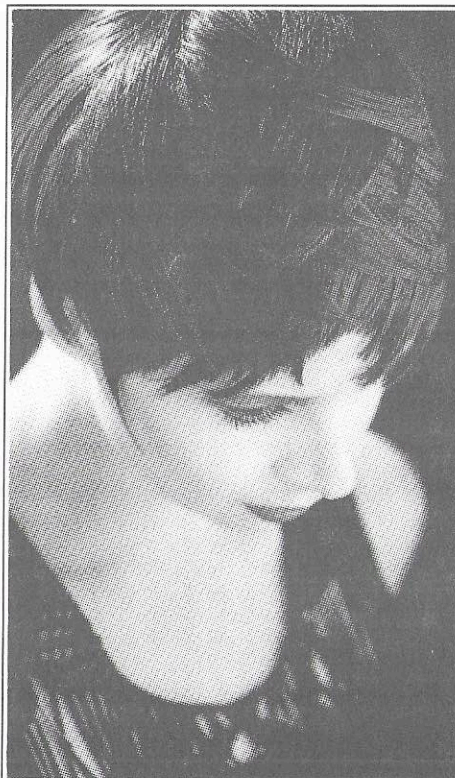
*Mags!*

**Where Else!!!**

**RESTAURANT - GIFT SHOP  
VIDEO DANCE FLOOR  
LEVI / LEATHER CRUISE BAR  
CABARET**

**#5 South Vandeventer**

**(314) 652 - 6500**



INTRODUCING  
**DETAILS™**  
CONDITIONING  
STYLING  
COMPLEX

BRILLIANT SHINE.  
WEIGHTLESS CONTROL.

A conditioning complex, so unique it's patented. Detangles as it adds soft, weightless control. So flexible, free and natural with strokes of brilliant shine.

FULL SERVICE SALON—Hair, Color, Perm  
Specialty Services—Body waxing, pedicures, one hour or half hour facial, artificial nails, lash tinting.

**David's  
design  
salon**

2233 S. Grand  
771-9001



**REDKEN**

©Redken Laboratories, Inc. 1994 All rights reserved.