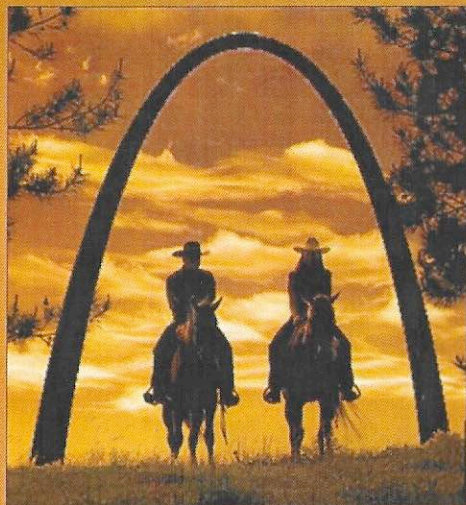


GATEWAY GAY RODEO ASSOCIATION

ST. LOUIS



## GATEWAY REGIONAL RODEO

**JUNE 11 – 13, 2010**

Mark Harrell Horse Facilities

12 Tucker Drive

Caseyville, IL 62232

Only 9 miles from the Gateway Arch  
Rain or Shine

## JURIED ART SHOW & SALE



Our 2010 Benefactors



Check out [www.gwgra.com](http://www.gwgra.com) for more information

Rodeo Hotline number 314-795-7744



CHRIS



April 2010

## Presents an *EVENING OF DIVERSE A CAPPELLA MUSIC*

Friday, April 23<sup>rd</sup>  
Saturday, April 24<sup>th</sup>, 2010  
7:30 pm

Lafayette Park  
United Methodist Church



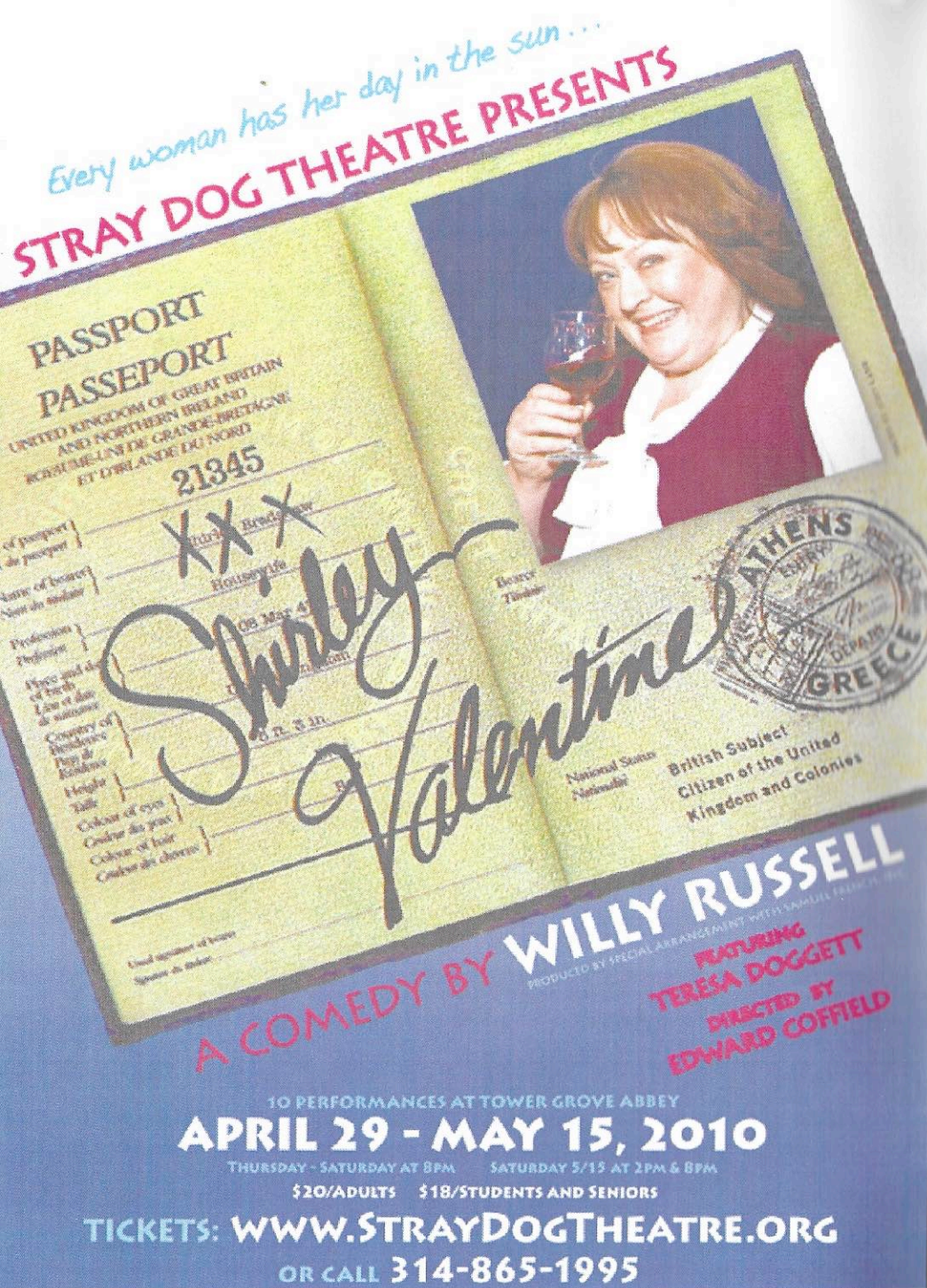
Interpreted for the Deaf

GALA  
CHORUSES



*Every woman has her day in the sun...*

**STRAY DOG THEATRE PRESENTS**



**PASSPORT**  
**PASSEPORT**  
UNITED KINGDOM OF GREAT BRITAIN  
AND NORTHERN IRELAND  
ROYAUME-UNI DE GRANDE-BRETAGNE  
ET D'IRLANDE DU NORD

21345

**ATHENS**  
**GREECE**

**A COMEDY BY WILLY RUSSELL**  
PRODUCED BY SPECIAL ARRANGEMENT WITH SAMUEL FRANKLIN

**FEATURING**  
**TERESA DOGGETT**  
**DIRECTED BY**  
**EDWARD COFFIELD**

10 PERFORMANCES AT TOWER GROVE ABBEY  
**APRIL 29 - MAY 15, 2010**  
THURSDAY - SATURDAY AT 8PM SATURDAY 5/15 AT 2PM & 8PM  
\$20/ADULTS \$18/STUDENTS AND SENIORS  
**TICKETS: WWW.STRAYDOGTHEATRE.ORG**  
**OR CALL 314-865-1995**

# CHARIS

The St. Louis Women's Chorus  
presents

## *Unplugged: AN EVENING OF DIVERSE A CAPPELLA MUSIC*

April 23rd and April 24th  
7:30 P.M.

Lafayette Park  
United Methodist Church

Kourtney R. Strade, Artistic Director

Chelle Habecker, Accompanist

Tena Polukewich, Sign Language Artist



STRAY DOG THEATRE IS A 501(C)(3) NON-PROFIT ORGANIZATION FUNDED IN PART BY



TOWER GROVE ABBEY 2336 TENNESSEE AVENUE SAINT LOUIS, MO 63104  
FROM GRAND BOULEVARD: BY 10 MILE SOUTH OF I-44: EAST ON SIDNEY: LEFT ON TENNESSEE. GATED PARKING.

CHARIS receives financial assistance from the  
Regional Arts Commission.





## Who We Are

CHARIS is a lesbian chorus open to all who identify as women. We differ in age, size, ethnic background, sexual orientation, and ability, but share a common goal to seek musical excellence, to voice messages of social justice, and to create a fun and supportive place for all women.

## Membership Information

CHARIS is a non-auditioned chorus that extends an open invitation for membership. Rehearsals are held on Tuesday nights from 7:00-9:30 p.m. at Divine Science Church, 3617 Wyoming Ave. If you are interested in membership information or in attending a rehearsal, please visit our website at [www.charischorus.org](http://www.charischorus.org) or call (314) 664-9340.

We are accessible to those with disabilities.

## Board of Directors

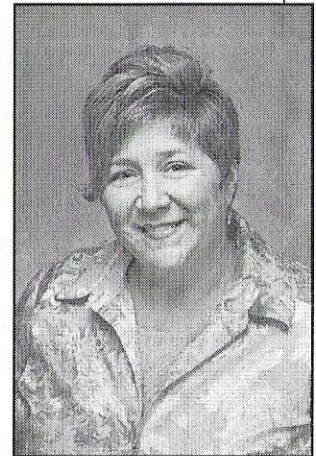
**Sharon Spurlock, President**  
**Scott Stevenson, Vice-President**  
**Allison Benoit, Secretary**

### *Members At-Large:*

**Kendra Henry, Lisa Reik, Megan Petra,**  
**Julie Harmann, Chad Johnson, Marge Schmidt,**  
**Kelly Mitchell**

## From the Board President Ms. Sharon Spurlock

Welcome to *Unplugged*, the final concert of our 17<sup>th</sup> season.



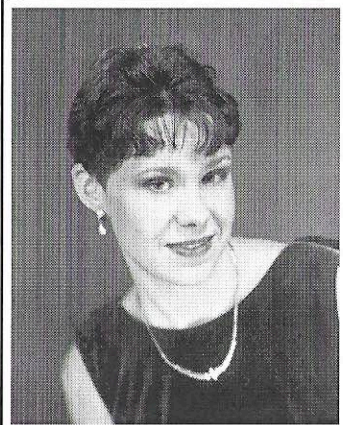
As the new president of the chorus, I am privileged to be able to work with these amazing women on and off stage to create beautiful music that tells a story about all of us. I believe that the quality of our voices is the best it has ever been and that Kourtney Strade has challenged us to perform at a level that most of us never dreamed we could achieve.

We are moving into our 18<sup>th</sup> season with confidence and vision to be a vital part of the LGBTQA community in St. Louis. CHARIS is looking for opportunities to collaborate with other community organizations. So stop and see us at our booth at St. Louis PRIDEFEST and tell us how we can work with you to make our community stronger!

CHARIS starts rehearsals on May 18<sup>th</sup> for our performance at PRIDE and we welcome new singers. Please join us.

In the fall, we begin rehearsals for our November concert, "*GIRLESQUE*," a campy, slightly naughty variety show. This will be a chance for CHARIS to sing some of the great music written for lesbian choruses as well as develop collaborations with other artists.

Sharon Spurlock, President



## From the Artistic Director Ms. Kourtney R. Strade

As I complete my first full year with the chorus, I have been contemplating the remarkable dedication and passion of these women in their undertaking of a predominately *a cappella* concert. Tonight's music is full of variety, and the process of preparing it has been a fantastic journey. The human voice is an amazing wonder, and by exploring all its possibilities, we have grown as singers, as musicians, and as

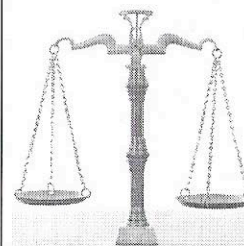
performers. For us, *a cappella* music is challenging and fun, and we love being able to take our "instruments" with us everywhere!

The term *a cappella* literally means, "of the church," and was originally represented as such. For many years, instruments were banned from Christian and Jewish religious services, so all music included in those ceremonies was vocal and unaccompanied. Later, the term was broadened to mean any vocal music without instrumental accompaniment, or sometimes, simply without piano. An entire genre has been created around *a cappella* music, and it is making a popular comeback. Many of you may have seen the recent reality television show, "*The Sing Off*," in which *a cappella* ensembles competed for cash and national recognition.

Some of tonight's selections were originally written for unaccompanied voices, or with percussion accompaniment only. Who can mistake the unique harmonies of Sweet Adelines music, or the undeniable style of doo-wop? The composers have either included the rhythmic elements into the voice parts, such as in "*Knickknack*," a song written by Bobby McFerrin for the Pixar animated short of the same name, or focused on the harmonic structure, as in Billy Joel's "*Lullabye*". Not all of the songs in the program were written to be sung *a cappella*, and a couple of the pieces were never even intended to be sung at all! The arrangements you will hear this evening will stretch the usual limits of the human voice; we will transform our sound into that of a 1930s big band, a modern jazz ensemble, and even an entire string orchestra! There is something for everyone in this program, and we hope you feel the excitement and fun we have singing this music for you.

Kourtney

Loretta K. Haggard, Attorney at Law



1221 Locust St., 2nd Floor  
St. Louis, MO 63103  
(314) 621-2626

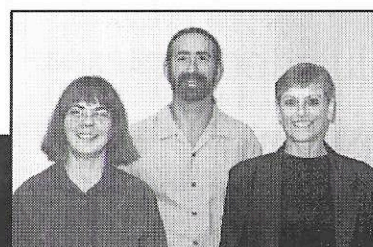
Representing labor unions and  
employees in employment matters

Proud member and supporter of CHARIS

Kourtney and the women of  
CHARIS...  
stay "*Unplugged*"!

Congrats to our own  
Kourtney, Kathleen and Cassie!  
LPUMC Chancel Choir

ROSENTHAL, PACKMAN & CO., P.C.  
Certified Public Accountants



*Serving the gay and  
lesbian community for  
over 40 years!*

Providing accounting, estate  
and tax planning, tax return  
preparation, personal  
financial planning, and  
small business consulting.

[www.rosenthalpackman.com](http://www.rosenthalpackman.com)

(314) 726-0020

**Congratulations CHARIS**  
***Unplugged:***  
**An Evening of Diverse A Cappella Music**

Susan E. Block  
Attorney at Law  
PAULE CAMAZINE & BLUMENTHAL, P.C.  
[sblock@pcblawfirm.com](mailto:sblock@pcblawfirm.com)

(314) 244-3640 Direct  
Former Administrative Judge, St. Louis County Family Court



165 N. Meramec Avenue  
Suite 110  
St. Louis, MO 63105

800 Friedens Road  
Suite 203  
St. Charles, MO 63303

(314) 727-2266  
(314) 727-2101 Fax  
[www.pcblawfirm.com](http://www.pcblawfirm.com)



**Missouri House of Representatives**

State Capitol • 201 West Capitol Avenue  
Jefferson City, MO 65101-6806  
Tele: (573) 751-4567  
Fax: (573) 751-2769  
E-Mail: [jeanette.oxford@house.mo.gov](mailto:jeanette.oxford@house.mo.gov)

**JEANETTE MOTT OXFORD**

**State Representative • 59<sup>th</sup> District**  
2910 Lemp Avenue • St. Louis, MO 63118  
Tele: (314) 771-8882

*Paid for by Citizens to Elect Oxford, J. Michael Vosler, Treasurer*

**Della Torta Confections**

**Kristen Wozniak**  
Owner

314-308-6114  
[dellatortaconfections@gmail.com](mailto:dellatortaconfections@gmail.com)  
[dellatortaconfections.wordpress.com](http://dellatortaconfections.wordpress.com)

**Congratulations on another  
successful concert!**

***“Unplugged”***  
**is a great way to sing.**

**Rev. Kathleen Wilder**

## Artist Biographies

---

### **Kourtney R. Strade, M.A.**

Kourtney received her Bachelor of Science in Vocal Music Education from Northwest Missouri State University and her Master's degree in Vocal Performance from the University of Missouri-Kansas City, Conservatory of Music. She is currently an instructor of voice for the Community Music School of Webster University and is the director of music at Lafayette Park United Methodist Church. Additionally, Kourtney received a Certificate of Vocology from the University of Iowa, and she uses this expertise in her own business, Heartland Healthy Voices, providing vocal health seminars, private voice lessons, and transgender voice training.

Ms. Strade is also an accomplished mezzo-soprano and has performed on stages across the United States in opera, oratorio, and recital. Recent roles include Freddie in *The Vegans of Provincetown*, Rosina in *Il Barbiere di Siviglia*, and Joan in the monodrama *Jehanne de Lorraine*. Kourtney has served as a singing voice consultant for the University of Iowa Voice Clinic, and worked as a clinician in Voice Diagnostics. In her private studio, Ms. Strade has helped many persons strengthen their singing voices following a voice disorder, and several of her students have gone on to become performance scholarship recipients and competition winners.

As an active member in the National Association for Teachers of Singing, the Music Educators National Conference, and a recent consultant for the Choral Journal, the national publication of the American Choral Directors Association, Kourtney is well-respected in the voice field and continues to make her mark as a musician and a specialist in vocal health. Kourtney is excited about continuing to serve as the Artistic Director for CHARIS.

### **Chad Johnson - "Joel" the Electrician**

Chad is not a stranger to CHARIS. This marks his third concert as a guest performer. Chad first appeared with CHARIS as the hairy little Bo-Peep. Most recently you might remember Chad as "The Big Boned Gal" from the *Quantum Leap* concert. Chad was recently elected to the CHARIS Board, with the task of PR/Marketing for CHARIS. He is excited to be in *UNPLUGGED!* with the women of CHARIS! Thanks for the memories CHARIS, you all ROCK!

## Artist Biographies

---

### **Chelle Habecker - Accompanist**

Chelle holds a Master of Arts in Music from the University of Hawaii, Manoa, with an emphasis in Ethnomusicology. She received her Bachelor of Arts in Music, Piano Performance, and an Associates of Arts in Piano Pedagogy from Spring Arbor University in Michigan. Chelle has been fortunate to have learned piano skills from Beverly Dull, Dzidra Shamuluas, Audrejean Heydenburg, and Paul Lyddon. Chelle has accompanied young musicians at NATS and Solo-Ensemble festivals, performs and accompanies traditional and contemporary Christian music, and is a member of MTNA. This is her third season with CHARIS.

### **Ro Anderson - Percussionist**

Robin "Ro" Anderson has been singing in and around the St. Louis area for about 25 years, with strong guitar playing and a powerful voice. She is currently performing with Diane Richardson as a duo, and is adding her voice to the MCC choir. This is her first time performing with CHARIS.

### **Stephanie Keysacker - Percussionist**

Stephanie Keysacker grew up in a musical family and realized early on that she, too, had a love for playing music. She began playing drums around age 13 but only recently began sharing her talents publicly. A former Alto II singer with CHARIS, Stephanie decided to switch to the instrumental side of the chorus, picking up the sticks for the Quantum Leap concert last fall. When she's not drumming for CHARIS, she can be found accompanying local singer/songwriter Summer Osborne at area venues. Musical interests aside, Stephanie enjoys traveling the U.S. and beyond and looks forward to her next adventure.

### **Greg Wieland - Bassist**

### **Kelly Mitchell - Bassist**

### **Tena Polukewich - Sign Language Artist**

Returning for her second concert, Tena is delighted to once again join CHARIS as sign language interpreter for *Unplugged*. For the past few years, she has been interpreting contemporary religious music at a local church and for various artists at the St. Louis Pride Festival. She has combined her passion and degrees in dance and sign language to teach African drums, rhythm and dance to deaf children.

## CHARIS Herstory

CHARIS was the realization of the dream of its founders Cindy Sohn and Juliet Jackson. With the guidance and support of the Gateway Men's Chorus (GMC), they organized the Committee to Unite Women Singers in the fall of 1992, with the goal of creating a chorus open to all women, regardless of cultural background or musical experience. CHARIS has always been a non-auditioned chorus.

Twenty-five women attended the first meeting of the chorus held in January, 1993. An acting Board of Directors was appointed at that time to organize and direct the activities of the chorus. CHARIS was granted status as a not-for-profit organization by the State of Missouri on September 27, 1993, and received confirmation of its tax-exempt status as a 501c(3) corporation in July, 1994.

The chorus made its first public appearance on May 23, 1993, at Trinity Episcopal Church in a fund-raiser to benefit Northside AIDS Outreach. Shortly thereafter CHARIS took the stage with The Gateway Men's Chorus to perform at the latter's Pride Concert in 1993. CHARIS made its solo debut in October, 1993, and has subsequently produced two to three solo performances along with community benefits each year.

Chorus highlights include a performance at the "Notes From Home" series at the Sheldon Memorial on January 24, 1995, at which time the chorus recorded "Dream In Color," its first commercially released tape. CHARIS hosted and performed at the 1995 Gay and Lesbian Association of Choruses (GALA) Leadership Conference for delegates from around the U.S. and a number of foreign countries.

In 1996, CHARIS proudly performed in Tampa, Florida at GALA Festival V. Our performances have benefited the Cathedral Mission Society, The Names Project, Metropolitan Food Pantry Association, Habitat for Humanity, and Parents, Families and Friends of Lesbians and Gays (PFLAG).

Merry Keller came to CHARIS as Interim Director in 1999. Her exceptional leadership skills and strong background in music both as a performer and teacher provided valuable assets to the chorus. Merry accepted the position of Artistic Director in January, 2000. Many wonderful concerts ensued under her direction. Highlights include "Sing for the Cure," a concert benefiting the Susan G. Komen Breast Cancer Foundation in June, 2001 and our tenth anniversary concert, "A Decade of Song," featuring special guest artist Holly Near.

Another era in CHARIS' herstory began in the chorus' 12<sup>th</sup> season with the leadership of new Artistic Director Aric Henson, former director of the Gateway Men's Ensemble. During that season, Henson directed CHARIS in "Postcards: Journeys of the Heart" at the New City School and "In The Groove" at The Shrewsbury Community Center. CHARIS' 13th season featured the shows, "Fired Up!" at the Missouri History Museum and "Broadway: A CHARIS Cabaret" at the Shrewsbury Community Center.

In January 2006, the chorus officially moved to a new rehearsal space and home at Lafayette Park United Methodist Church. An important factor in this decision was a commitment to greater accessibility. The church's elevator makes it possible for those with disabilities to become a member of CHARIS, serve on its Board of Directors, or attend other chorus functions.

The 2006-2007 season was a banner year for the chorus and opened with "Legends" featuring St. Louis' own legend, Kim Massie as the guest artist. In the spring, CHARIS staged the world premiere performance of *"The Vegans of Provincetown,"* a witty and lesbian-friendly homage to Gilbert and Sullivan.

CHARIS' 15th anniversary season began in November 2007 with a tribute to the Academy Awards - "CHARIS Does Oscar." We followed that up by presenting "CHARIS On The Couch," with special guest artist Lisa Koch, a talented singer-songwriter and comedienne. In July, 2008, CHARIS took to the stage in Miami and proudly shared their voices with thousands of other LGBT singers at the GALA Festival VIII.

CHARIS' 16th season began with an ending, as Artistic Director Aric Henson brought his tenure to a close. After leading CHARIS in a creative interpretation of "The Four Elements" in the fall of 2008, he handed the baton to our current Artistic Director, Kourtney R. Strade. Kourtney has led the chorus into new and challenging territory with last fall's "Quantum Leap," a concert of music by women composers over the centuries. Tonight, as the chorus ends its 17th season, CHARIS again breaks new ground with an all a cappella concert. Under Kourtney's leadership we look forward to sharing our voices and vision with our audiences for many years to come.



JUNE 18 & 19  
8:00 PM

# MAMA KNOWS!



TICKETS  
(314) 289-4169  
GATEWAYMENSCHORUS.ORG

  
GATEWAY MEN'S CHORUS  
OUR 23<sup>RD</sup> SEASON



Kelley Green, MBA  
*Money Maestro*

314-625-4007 office  
314-222-0618 fax

KelleyGreen@FinancialHousekeepers.com  
www.FinancialHousekeepers.com

*Housekeeping for Your Bank Account*

Christine Washington--

Thank you for your unconditional  
support my love of CHARIS!

I love you!

--Chay



This  
Big Boned Gal  
sends congrats to the  
women of CHARIS!

Always stay *Unplugged!*

## CHARIS

### The St. Louis Women's Chorus

#### Soprano I

Allison Rose  
Rev. Kathleen Wilder  
Kristen Meyers  
Belinda Quimby  
Kelsi Davis  
Aleksandra Shklyar  
Cassie Coleman  
Rev. Felicia Scott  
Dayna Deck

#### Soprano II

Sharon Smith  
Penny Frame  
Megan Petra  
Kim Powlishta  
Carol Weisman  
Colleen Gilmore  
Allison Benoit  
Jennifer Wells  
Karen Shye Woods

#### Alto I

Julie Harmann  
Terri Velasco  
Lisa Riek  
Kelly Mitchell  
Susan McIntosh  
Ro Anderson  
Amy Aldridge

#### Alto II

Candice Freeman  
Marge Schmidt  
Sharon Spurlock  
Dina Young  
Sharon Opp  
Chataunya "Chay" Rawles  
Donna Yakel



## Special Acknowledgements

CHARIS gratefully acknowledges the help and contributions of the following in preparation of this production.

Production Committee: Sharon Smith, Producer  
R.E. Dix, Allison Benoit, Kelly Mitchell, Donna Yakel

Performance Committee: Sharon Smith, Donna Yakel, Amy Aldridge, Kourtney Strade, Marge Schmidt, Kelsi Davis, R.E. Dix

PR Committee: Chad Johnson, Chair, Sharon Spurlock, Allison Benoit, Julie Harmann, Miles Harmann, Sam Harmann

Box Office Manager: Chad Johnson

Stage Manager: Jessica Girard

Assistant Stage Manager: Jessica Willmore

Sound Technician: Bill Byrd

Lighting Technician: R.E. Dix

House Manager: Fri: Debbie Baker

Sat: Mandy Beneze

Advertisement Sales: Chad Johnson

Cover/Poster Design: R.E. Dix, Bill Byrd

Grant Writer: Sharon Spurlock

Program Production: Bill Byrd

Rehearsal CDs: Susan McIntosh

Webmaster: Vicki Staples, Candy Freeman

Volunteers: Katie Aldridge-Benoit, Mary Ann Tollivar, Scott Stepheson, Barb Weisman, Leo Weisman, Katie Hawker, Loretta Haggard





Serving St. Louis 40 Years

## Bartolino's Family of Restaurants

*Cook good food & give plenty.*

**Bartolino's**  
OSTERIA  
2103 Sulphur Ave  
(Hampton at Wilson)  
314.644.2266

**Bartolino's**  
SOUTH  
5914 S. Lindbergh  
314.487.4545

**Chris'**  
Pancake  
& Dining  
5980 Southwest Ave  
314.645.2088

## Come Dance with SLED this summer!

Summer Classes start June 3rd.

Location: Evangelical UCC  
204 E Lockwood Ave,  
Webster Groves, MO 63119

Time: Thursdays, 7-8pm

Beginners drop-in class  
no experience necessary

For more info: [www.stlequalitydance.org](http://www.stlequalitydance.org)  
Email: [stlequalitydance@gmail.com](mailto:stlequalitydance@gmail.com)



St. Louis  
**EQUALITY**  
DANCE

# sage

## Metro St. Louis

Services & Advocacy for GLBT Elders

[www.SageMetroSTL.org](http://www.SageMetroSTL.org)

314-772-5887

ERIC HENSON  
MUSIC EDUCATOR

COLLA VOCE STUDIOS  
INDIVIDUALIZED VOCAL INSTRUCTION

ST. LOUIS, MO 63123 (314) 313-0045

**BAD DOG**  
ST. LOUIS, MO

3960 Chouteau Ave  
(Behind White Castle)  
[www.baddogbarstl.com](http://www.baddogbarstl.com)

STRENGTH THROUGH  
DIVERSITY!

COWBOY UP TO  
**BAD DOG COUNTRY**

Every Friday  
Dance Lessons  
8pm - 9pm  
Country Dancing  
9pm - Midnight

Happy Hour  
prices all night  
in L.U.R.E.

# Unplugged:

## ACT I

<i>The House Is Rockin'</i>	by Doyle Bramhall & Stevie Ray Vaughan Arr. Billingsley	)
<i>The Pink Panther</i>	by Henry Mancini Arr. Althouse	)
<i>(Sittin' on) The Dock of the Bay</i>	by Steve Cropper & Otis Redding Arr. Huff	
<i>Lullabye</i>	by Billy Joel Arr. Shaw Kathleen Wilder, Alison Benoit, Amy Aldridge, Jenna Wells	
<i>When I'm 64</i>	by Lennon/McCartney Arr. Sharon Felicia Scott, Kristen Myers, Julie Harmann, Dina Young	
<i>It Takes a Village</i>	by Joan Szymko Carol Weisman, Kristen Myers, Ro Anderson, Terri Velaso - Soloists	
<i>I Love A Rainy Night</i>	by Eddie Rabbit Arr. Althouse Marge Schmidt & Dina Young, Soloists	
<i>Ta Ti-kee Tei</i>	by Sid Robinovitch	
<i>I Got Rhythm</i>	by George & Ira Gershwin Arr. Swingle Kelsi Davis, Megan Petra, Lisa Riek, LaTish McKinney	
<i>The Lonely Goatherd(ess)</i>	Arr. by Steve Milloy Allison Rose, Belinda Quimby, Ro Anderson, Kelsi Davis, Julie Harmann, Cassie Coleman, Dina Young, Terri Velasco	)
<i>Embraceable You</i>	by George & Ira Gershwin Arr. Billingsley Colleen Gilmore & Marge Schmidt, Soloists	)
<i>Frog Song</i>	by Bradley Nelson	
<i>Sing, Sing, Sing</i>	by Louis Prima Arr. Sharon Karen Shye Woods & Felicia Scott, Soloists	

# AN EVENING OF DIVERSE A CAPPELLA MUSIC

*\*Please enjoy a fifteen minute intermission*

## ACT II

<i>Let's Sing</i>	by Audrey Snyder Aleksandra Shklyar, Soloist
<i>Knickknack</i>	by Bobby McFerrin Cassie Coleman, Soloist
<i>I Hope You Dance</i>	by Tia Sillers & Mark Sanders Arr. Sharon
<i>The Joint is Jumpin'</i>	by "Fats" Waller Arr. Wright
<i>Chili Con Carne</i>	by Anders Edenroth Cassie Coleman, Kathleen Wilder, Belinda Quimby, Jenna Wells, Ro Anderson
<i>Here Comes the Sun</i>	by George Harrison Arr. Sharon
<i>I Have Dreamed</i>	by Richard Rodgers Arr. Shaw Susan McIntosh, Soloist
<i>I Wish</i>	by Stevie Wonder
<i>A Cappella</i>	by Kirby Shaw Karen Shye Woods, Soloist
<ul style="list-style-type: none"> <li><i>Please enjoy refreshments located in the gymnasium. Baked goods provided by Della Torta Confections and Hartford Coffee Coffee is provided by Hartford Coffee</i></li> </ul>	
<ul style="list-style-type: none"> <li><i>Restrooms are located on the first floor as well as the basement.</i></li> <li><i>Please use only the front and back doors on the right of the stage for intermission and restrooms.</i></li> </ul>	

**Going Back to School!**  
**Trivia Night**  
 Benefitting the Benton Park West Neighborhood Association

**Saturday June 19th  
 2010 at 7p**

(Doors open at 6:15p)  
 at St. Wenceslaus  
 Parish Church/St.  
 Frances Cabrini  
 Academy, 3022 Ore-  
 gon, the corner of  
 Gravis and Oregon  
 in south city.

Beer, wine and  
 snacks will be pro-  
 vided while supplies  
 last. Outside  
 snacks and adult  
 drinks are welcome.

CASH PRIZES AWARDED TO  
 FIRST, SECOND AND THIRD  
 PLACE TRIVIA WINNERS!

Mulligans  
 will be  
 available for  
 purchase

This is a non-smoking  
 event, except in  
 designated places outside

Cost  
 \$20 per person  
 with a minimum of 6,  
 max of 8 per table

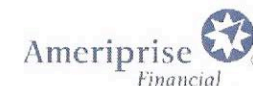
For more information, call 314.771.0803

Poster Design and Flyer by EFW, Privacy Committee: ead@spcglobal.net

**DAYNA F. DECK**  
**ATTORNEY AT LAW**  
 PO Box 300497  
 St. Louis, MO 63130  
 Phone: 314-971-3103  
 Fax: 314-862-5591  
 Email: daynadeck@spcglobal.net  
 Website: <http://www.specialedatty.net>

**EDUCATION • SPECIAL EDUCATION**  
**IDEA • REHAB ACT • FERPA • DISCRIMINATION**

**EMPLOYMENT • DISCRIMINATION**  
**AGE/RACE/SEX/DISABILITY/RELIGION**  
**SEXUAL ORIENTATION DISCRIMINATION**  
**SEXUAL HARASSMENT**  
**WHISTLE BLOWING • FAMILY MEDICAL LEAVE**  
**SEVERANCE AGREEMENTS**



## Ameriprise Financial helps you stay true to your dreams.

**Ameriprise Financial has been a leader in financial planning for the gay and lesbian community for decades.**

As an Ameriprise financial advisor, I can help you plan to achieve your most important goals including starting your own business, adopting or just retiring in comfort. I can also help you plan to meet your immediate needs with investment advice, estate planning strategies and financial planning with your partner.

Simply put, we believe in your dreams. I can help you plan to make them happen.

**To start a conversation call  
 314-744-4007 today.**



Angela Curtis, CFP®  
 Senior Financial Advisor  
**CERTIFIED FINANCIAL PLANNER™** practitioner  
 2 Cityplace Drive  
 Suite 380  
 St Louis, MO 63141  
 314-744-4007  
[angela.2.curtis@ampf.com](mailto:angela.2.curtis@ampf.com)  
[ameripriseadvisors.com/angela.2.curtis](http://ameripriseadvisors.com/angela.2.curtis)

Financial planning services and investments available through Ameriprise Financial Services, Inc., Member FINRA and SIPC. Ameriprise Financial cannot guarantee future financial results.

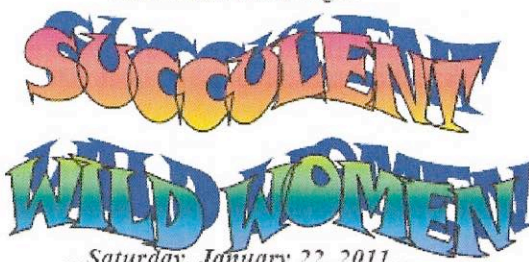
© 2009 Ameriprise Financial, Inc. All rights reserved.

**Do you know WOMEN???**

**Do you love WOMEN???**

**Have you ever wanted to be a WOMAN???**

Join CHARIS, The St. Louis' Women's Chorus, at our  
2nd Annual Trivia Night:



...Saturday, January 22, 2011...

The Shrewsbury Community Center; 5200 Shrewsbury Ave 63119

...doors open at 6:15 pm; trivia begins promptly at 7:00...

...\$20 per person for tables of eight...

\*Fabulous prizes for first, second and third place\*

\*Prize for best table decoration\*

\*Heads or Tails \*Let's Make a Deal \*Name That Tune \*Mulligans\*

## Become a Member

CHARIS is a non-audition chorus. We invite you to visit any Tuesday when we are in rehearsal and see what we are about. You may want to call (314) 664-9340 to confirm we are in rehearsal before you come or with any questions you may have about the chorus.

### *Be a Singing Member as simple as:*

- Regular attendance at weekly rehearsals — Tuesdays from 7:00 to 9:30 p.m.
- Commitment of time and energy to learn your music prior to a performance, including listening to learning tapes, sectionals, and individual review
- Payment of dues as established by the board
- Active participation in chorus decision-making and fundraising
- Responsibility for concert attire

### *Non-Singing Membership*

We welcome non-singing members to join us and help with the behind-the-scenes work that keeps us singing. Non-singing members can help in a variety of ways including:

- Board membership
- Ushering a concert
- Planning or working a fundraiser
- Cataloging music
- Building sets
- Assisting with publicity

There's something for everyone, so be a part of the fun!



Congratulations **CHARIS!**  
Another GREAT  
Concert!

We are always *pluggin'* for you!

Your 2009 & 2010 Board of Directors:

Allison, Chad, Dina, Julie, Kendra, Linda,  
Lisa, Marge, Megan, Renee, Scott, Terri, Vicki

**Kathy  
Wysack**

**Attorney at Law**

- \* Adoptions
- \* Wills
- \* Living Trusts
- \* Probate
- \* Name Changes
- \* Power of Attorneys
- \* Guardianships
- \* Traffic

3201A So. Grand Blvd.  
St. Louis, MO 63118

**314-771-4494**

**618-791-8091**

[kathy@kathywysack.com](mailto:kathy@kathywysack.com)

Licensed in  
Missouri  
& Illinois

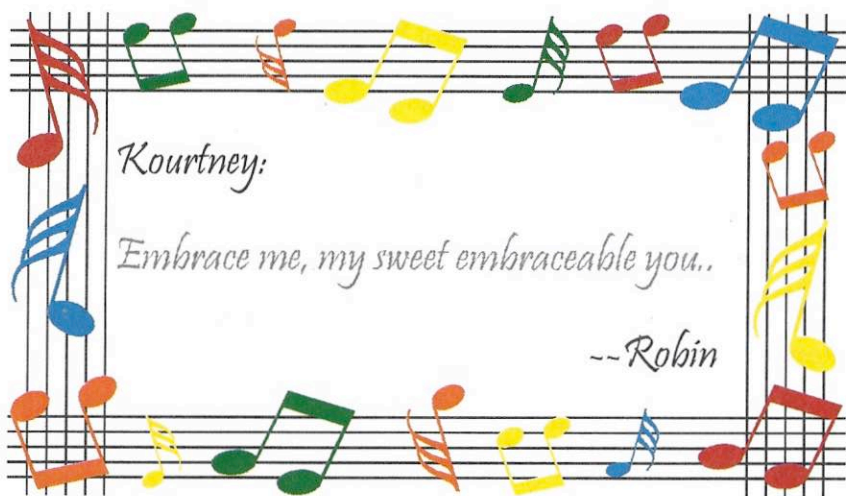
Kim,

I just want to say....Ta tiki tay tu-ta tu tiki tay ta Tu tiki taka  
tu tay. Ta tiki tay tu-ta tu tiki tay ta Tu tiki taka tu tay.

Never forget it!

I love you.

Candy



Way to go CHARIS!

Another concert under your  
"Unplugged" belt.

Chad Johnson and Bill Byrd

## CHARIS in ACTION!



For 2010

Pride  
June 26/27

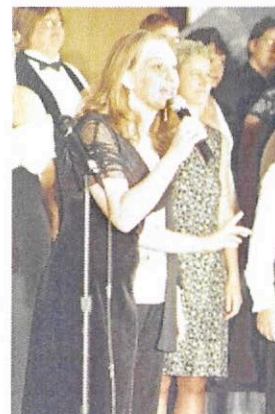
Sweet Spot  
Cabaret  
July 17

"Girlesque"  
November 13

Trivia Night  
January 22, 2011

Past Activities!

**Trivia Night  
Cabaret Shows  
Dances  
Concerts  
Pride!**



Don't miss getting in on the 18th season of  
CHARIS - The Saint Louis Women's Chorus.

Watch your mail, email and media outlets for  
information about the first show on  
November 13th, "Girlesque".

**Metropolitan Community Church  
of Greater Saint Louis**

*... a place to call home*

A Progressive and Inclusive Christ-Centered Community

**1919 S. Broadway, Saint Louis, MO 63104**

**314.361.3221    [www.mccgsl.org](http://www.mccgsl.org)**

*Join us for Sunday Worship  
at 9a & 10:30a*

**Creative  
Catering**



**DAVID HIETTER**

*Chef & Owner*

**Phone or Fax  
(314) 434-1050**

**Botanicals  
Design  
Studio**

*'The Alternative To Ordinary'*

*unique florals    select gifts*



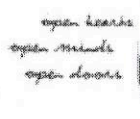
3014 South Grand Avenue • St. Louis, MO 63118 • [flowers@botanicalsdesignstudio.com](mailto:flowers@botanicalsdesignstudio.com) • [www.botanicalsdesignstudio.com](http://www.botanicalsdesignstudio.com)

**314-772-7674**

# WHAT IF CHURCH COULD LIGHTEN YOUR LOAD?

RETHINK CHURCH at 10thousanddoors.org

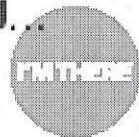
Lafayette Park United Methodist Church  
2300 Lafayette Ave. - St. Louis  
314-771-9214  
lp-umc.org



The people of The United Methodist Church™

## FINANCING FOR WHATEVER MOVES YOU...

From cars to trucks, motorcycles to RVs,  
let State Farm Bank® finance or refinance  
all the things that move you. Call today for  
more information on your vehicle loan.



Call today for more information.



Toni L. Smith CLU ChFC  
State Farm Agent  
St. Louis, MO 63109  
Bus: 314-832-1638  
toni.smith@statefarm.com



statefarm.com®

PF01251 1/08

State Farm Bank, F.S.B. • St. Louis, MO



## CENTER FOR DIVINE LOVE

An All-inclusive Outreach Based Urban Ministry



Sunday Service  
10:30 A.M.

3617 Wyoming Street  
St. Louis, MO 63116

314-776-7969  
divinesc@swbell.net  
www.dscitychurch.org

God Loves Everyone and So Do We!

## CHARIS Calendar

**June 26-27, 2010:** CHARIS performs at Pride Fest

**July 17, 2010,** Sweet Spot Cabaret to Benefit CHARIS - Divine Science Church, 8:30 pm

**August 3, 10, 17, 2010** Open Rehearsals for Fall concert - "Girlesque", 7-9:30 pm.

**November 13th, 2010** Fall concert, "Girlesque"

**January 22, 2011** Trivia Night - The Shrewsbury Community Center, 7 pm

**Keep up with CHARIS!**

[www.charischorus.org](http://www.charischorus.org)

[www.myspace.com/charischorus](http://www.myspace.com/charischorus)

<http://www.facebook.com/pages/CHARIS-the-St-Louis-Womens-Chorus/195852637487>



Full Menu, Daily Specials  
Large Dining Room  
and, of course

**GREAT PIZZA!**

**SEASONAL PATIO!**

**SHUTTLE SERVICE**  
to All Major Sporting Events

2101 Menard @ Russell  
in Historic Souland  
314.865.1994  
Open 7 Days

**[www.joanies.com](http://www.joanies.com)**



# Just John

nightclub.video bar. karaoke bar.showtune sundays.  
4112 Manchester Ave

Proud supporter of



## SUNDAY

Showtune Sundays 4-8pm

\$2.75 Absolut Drinks!

## MONDAY

HOMO Bingo

w/ Dieta Pepsi!

## 2 - 2 - 2 TUESDAY

\$2 rail/domestics/shots

Karaoke with Shawn & Shawn!

## Wednesday/Thursday

Karaoke w/ Rendezvous

\$5 Long Islands!/  
\$3 Cherry Bombs!

## Friday/Saturday

Dance Party

w/ DJ Danny Morris

\$2 Miller lites+chills /

\$2 Bud Lights+Selects

## Additional Ways to support CHARIS

As a not-for-profit organization, the chorus relies heavily on contributions from chorus and board members, grants and individual supporters to help us meet our financial obligations and to realize our dreams for the future of the chorus.

CHARIS-The St. Louis Women's Chorus is a 501(c)(3) corporation, and your direct donations are tax exempt.

## iGive.com™

Change online shopping for good.  
**to help CHARIS!**

Join the many CHARIS supporters who are already donating Sears', Lands' End's and J. C. Penny's money to us. Go to [www.igive.com](http://www.igive.com), register, and choose CHARIS: The St. Louis Women's Chorus from the list of causes and go shopping online.

Here is a FREE way to help CHARIS do fundraising. Just shop online and do searches on the computer.

- Start shopping! At [www.igive.com/CHARIS](http://www.igive.com/CHARIS)
- Start Searching at <http://isearch.igive.com/>.

Simple way for you to help CHARIS.

Join now at [www.igive.com/CHARIS](http://www.igive.com/CHARIS)

## CHARIS is pleased to announce **PAY PAL**

You now have the ability to donate through PAY PAL, the same service you might use through other websites. Contact us at (314) 664-9340 about how, through PAY PAL, your donation can go right on your credit or debit card.

**I want to be a  
Friend of CHARIS!**

Name: \_\_\_\_\_

Address: \_\_\_\_\_

City: \_\_\_\_\_ State: \_\_\_\_\_

ZIP: \_\_\_\_\_ Phone: \_\_\_\_\_

E-Mail: \_\_\_\_\_

My donation is in honor/memory of:

\_\_\_\_\_

\_\_\_\_\_ \$25      \_\_\_\_\_ \$35  
\_\_\_\_\_ \$50      \_\_\_\_\_ \$100  
\_\_\_\_\_ Other

☐ Do not publish my name in the program book.

**Mail contributions to:**  
**CHARIS, P.O. Box 21624, Saint Louis MO 63139**  
**or go to [www.charischorus.org](http://www.charischorus.org)**

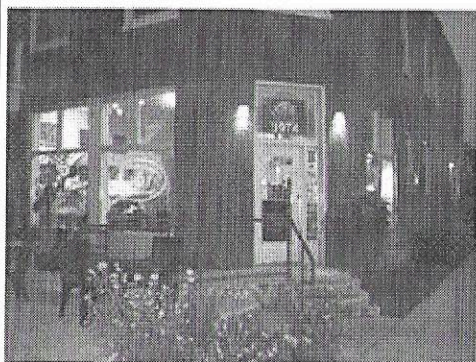
*Thank you for your continued support of CHARIS!*

**Friends of CHARIS**

CHARIS expresses thanks to the following people for their gifts & support throughout the 2009-2010 season:

Affton Cafe  
Ameriprise Financial  
Angela Curtis  
Aric Henson and Scott Stevenson  
Bill Byrd and Chad Johnson  
Candy Freeman and Kimberly Powlishta  
Creative Catering  
Della Torta Confections  
Dina Young  
First Divine Science Church  
Hartford Coffee  
Lafayette Park United Methodist Church  
Linda Clark and Vicki Staples  
Marilyn Stavenger  
Metropolitan Community Church of Greater St. Louis  
Nancy Novak  
Rev. Kathleen Wilder  
Rev. Sharon Kichline  
Sharon Opp  
St. Louis Cinemas  
Susan McIntosh  
Vitality Unlimited Spa  
The CHARIS Board of Directors  
The City Diner  
The Gateway Men's Chorus Trivia Team  
The Women of CHARIS

*We sincerely regret any omissions.*



3974 Hartford Street  
St. Louis, MO 63116  
314-771-JAVA (5282)  
hartfordcoffee.net

Hartford Coffee Company is proud  
to support Charis and to be a part of  
the Tower Grove community.

New Menu Items  
Fresh Baked Pastries  
Daily Lunch & Dinner Special

Open Mic Night Every Friday  
Live Music Saturday and Sundays  
Monthly Local Artist Display

Family Fun Night w/ Celia 1st Wednesday of the Month  
(Kids sing-a-long)

Kid's Indoor Play Area

Outdoor Patio

Free WiFi

*Hours*

Monday	6am - 9pm
Tuesday	6am - 9pm
Wednesday	6am - 9pm
Thursday	6am - 9pm
Friday	6am - 10pm
Saturday	7am - 10pm
Sunday	7am - 7pm

## HARTFORD COFFEE

We air roast our own coffee on  
site in small batches ensuring the  
freshest and highest quality  
coffee available.

Bring this coupon in for a free  
medium coffee!

Band  Together

PRESENTS

# Comedy Tonight

2010 SPRING POPS CONCERT

**MAY 22 - 8:00pm**

E. Desmond Lee Concert Hall  
at the 560 Music Center

560 Trinity Avenue  
at the western end of the U. City Loop

**ADMISSION IS FREE**

[www.bandtogetherstl.com](http://www.bandtogetherstl.com)