

The power of one
VOICE

can influence an
entire society.

Sing with your heart.



PREMIER



Marti Frumhoff

314-368-6373 cell phone
314-647-0001 x146 office
314-647-0376 fax

Proudly Selling Homes in St. Louis City

2016 S. Big Bend, St. Louis, MO 63117

November 2001

CHARIS
THE ST. LOUIS WOMEN'S CHORUS

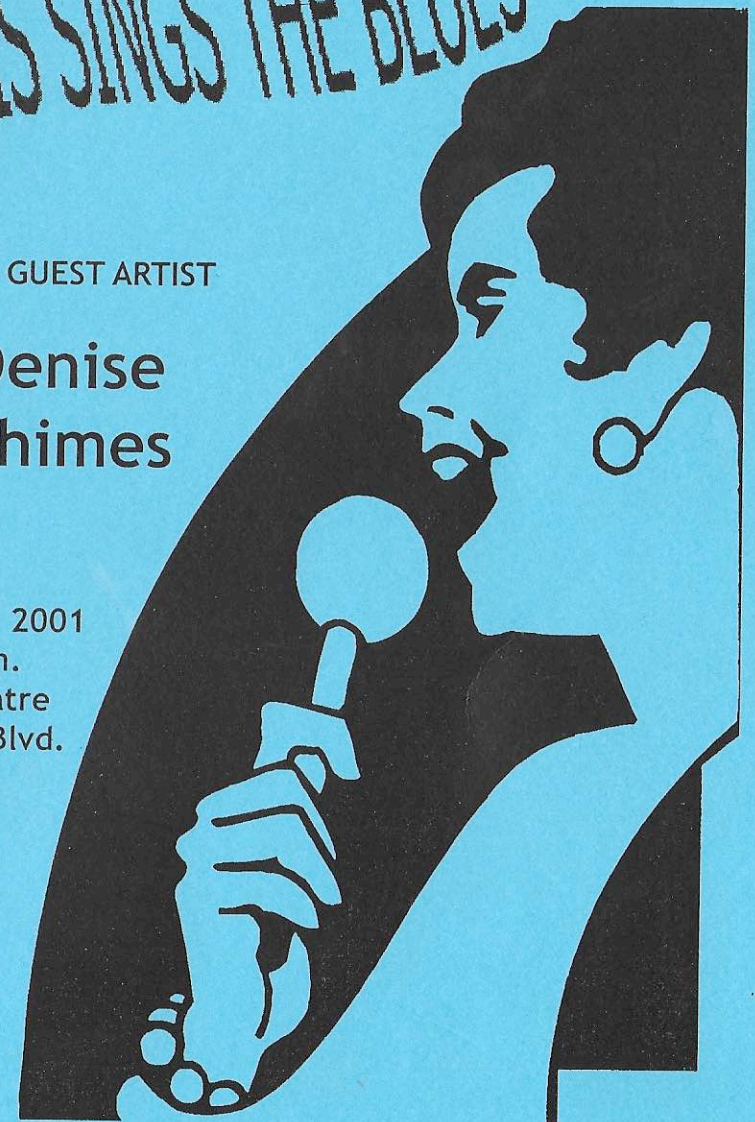
PROUDLY PRESENTS

CHARIS SINGS THE BLUES

WITH GUEST ARTIST

**Denise
Thimes**

November 3, 2001
8:00 p.m.
Grandel Theatre
3610 Grand Blvd.



Welcome

Dear Friends,

The title of our concert - "CHARIS Sings the Blues" - means something very different to us now than it did last year when we came up with the concept. We still sing about the sad feelings that come with "ordinary, everyday" losses — the loss of a job or a loved one or the loss of one's way in life. But we sing as well to express the almost unfathomable shock and sorrow we all share following the terrorist attacks on September 11. We strive to convey to you tonight our deeper understanding of "the blues," and hope our message will resonate with your own feelings.

Of course, "the blues" are about more than sadness - they are about resilience and survival too. You cannot help but feel uplifted by our closing rendition of Paul Simon's "Bridge Over Troubled Water," graced by the soaring tones of Denise Thimes, St. Louis' favorite jazz and blues singer. CHARIS is very happy to make music with Denise. We thank her from the bottom of our hearts for sharing her talents and "soul" with us tonight.

CHARIS also extends a special thanks to six new, energetic members of its Board of Directors: Russell Wycoff, Donna Street, Rodney Strothcamp, Dennis Clodfelter, Sarah Bridges, and James Pryor. They and our continuing Board members have done yeoman's work behind the scenes to bring you this concert - including publicity and media coordination, set construction, production logistics, program preparation, mailings, volunteer coordination, financial accounting, and much more. We gratefully acknowledge the hard work of many chorus members and volunteers who are listed in this program; the generosity of our Friends of Charis donors; and the loyal support of our audience. Without all of your efforts, we could not succeed.

Now sit back and allow yourself to be swept away by the sweet, sad, and sultry tones of CHARIS and Denise Thimes!

Loretta Haggard, President of CHARIS



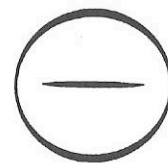
**ANIMAL HEALTH
& HEALING**

*Homeopathy
Acupuncture/TCM
Nutraceuticals
Bach flower remedies*

CHRIS CROSLEY, D. V. M.
and associates

2615 South Big Bend Blvd.
St. Louis, MO 63143

314-781-1738



CHARIS

The St. Louis Women's Chorus

*Merry Keller, Artistic Director
Matthew Chapman, Accompanist
Glenace Humphrey, Sign Language Artist*

Soprano I

Jane Clark
Dayna Deck
Cindy Fedders
Jennie Kelly
Kristen Myers
Julie O'Guinn
M.S. Phillips
Lesley Wilson

Alto I

Dot Bailey
Katherine Kinnamon
Debbie Lawson
Susan McIntosh
Kelly Mitchell
Lynn Mark
Sharon Smith
Nadine Varner

Soprano II

Jayne Christenson
Darlene Dougherty
Sandra English
Marti Frumhoff
Sanae Furiya
Colleen Gilmore
Loretta Haggard
Julie Jennings

Alto II

Linda Agnew
Susan Drake
Susan Levin
Lesley Proud
Chataunya Rawles
Sharon Spurlock
Debbie Stover
Dina Young

CHARIS concerts are interpreted
for the deaf/HH



Guest Artist

Denise Thimes

Denise Thimes, arguably St. Louis's favorite jazz/blues singer, was born into the world of jazz, blues, R&B and soul, the daughter of Lou "Fatha" Thimes, a legendary DJ on AM radio. Her singing encompasses those musical styles and then some. Over the years, she has entertained St. Louis audiences with not only her singing voice but her acting ability, often appearing with the Black Rep. She is doing some traveling now, seeking a national audience. Denise's voice will fill the hall, drawing you into the "conversation" of her life experience as it connects with your own. It is CHARIS's great pleasure to share the stage with her.

Serving Our Community



Southampton
HEALTHCARE, INC.

2340 Hampton Ave.
St. Louis, MO 63139
(314) 647-2200



David J. Prelutsky, M.D.
Internal Medicine

Catherine Williamson, F.N.P.
Nurse Practitioner

Artistic Director - Merry Keller

Merry Keller has been the Artistic Director of CHARIS since October, 1999. With an undergraduate degree in vocal/choral music, and advanced studies in choral conducting and voice, Merry has been involved in performing, directing and teaching music for over twenty-five years. Her experience ranges from piano bar to opera. Her local performance experience includes The St. Louis Women's Chorale, Random Access, The St. Louis Chamber Chorus, several community-based groups, and solo performance in a variety of venues in the area. Merry founded and directed a St. Louis Community Chorus in the Central West End, served as Director of Music at Centenary United Methodist Church and taught in Pennsylvania and Missouri public schools. Professionally, Merry is an ordained minister in the United Church of Christ.

Sign Language Artist - Glenace Humphrey

Glenace has interpreted for CHARIS since it was founded in 1993. She has worked in the field of interpreting for more than 25 years and is a freelance/community interpreter. She holds national certification from the Registry of Interpreters for the Deaf (R.I.D.). She has interpreted in many places in the United States, and also in Japan and Europe. Glenace has attended the GALA choral festivals since 1989. Her initiation to GALA was in Seattle interpreting for the Denver Women's Chorus. Later festivals took her to Denver, Tampa and most recently San Jose. She has recently interpreted for Bruce Villanche, Maya Angelou, Nell Carter and President George W. Bush. Glenace loves sharing the poetry, inspiration and laughter of music through sign language with the Deaf and hearing communities.

Accompanist - Matthew Chapman

Matthew is currently a student of Annette Burkhart, a member of the Washington University music faculty. Originally from the Chicago area, he has studied piano since the age of 7. He also studied pipe organ at the University of Illinois while obtaining a degree in chemical engineering. Matthew is also an active singer, and has sung with the St. Louis Symphony Chorus, the St. Louis Chamber Chorus, and the St. Louis Bach Society. He works as a project manager with Mallinckrodt, Inc.



Celebrate the seasons.

Wrap romance, tragedy, grandeur and glorious music in one sensational package, with season tickets to Opera Theatre.

Remarkably affordable season tickets go on sale November 5 through February 15th. You'll get preferred seating to all four 2002 productions:

The Magic Flute
Lucia di Lammermoor
Loss of Eden

(based on the lives of Charles and Anne Lindbergh)
Hamlet

Celebrate the two best seasons of the year — the holidays, and Opera Theatre's spring season, May 25-June 30th. Whether it's a gift for yourself or for someone else, there has never been a better time to purchase Opera Theatre season tickets.

For more information, call (314) 961-0644 or click www.opera-stl.org

OPERA
THEATRE
OF SAINT
LOUIS

A festival of opera...in English.

Acknowledgements

CHARIS gratefully acknowledges the various contributions of the following persons to the preparation of this concert.

Emcee: Ken Haller

Publicity: Russell Wycoff

Media Coordinator: James Pryor

Flyers and tickets: Sharon Spurlock

Ticket outlets: Planet Proud and Left Bank Books

Publications and mailings: Jerry White and Linda Clark

Program: Cindy Fedders

Rehearsal space: Centenary United Methodist Church

Production: Jane Clark

Stage Manager: Anne Cailteux

Assistant Stage Managers: Donna Crain and Peggy Knock

Light Board: Cory Cailteux

Spotlight: Susan Drake

House Manager: James Pryor

Sound: Dennis Clodfelter

Boxes for the set: Rodney Strothcamp and Donna Street

Musicians:

Jerry Oliver, percussion

Gwen-Marie Lerch, bass

M.S. Phillips, trumpet

Guest appearance: Chad Johnson in "Mary Had a Little Blues"

Buffet: Custom Catering By Larry

Flower arrangements: Warren Sanders

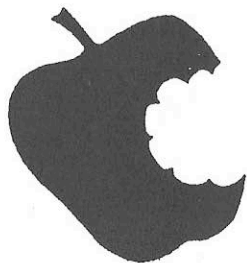
Concert helpers:

Darren Chapman, Steve Sulainis, Warren Sanders, Jim Sinclair, Pete Housman, Donna Street, Bill Byrd, Cheryl Stockton, Pat Yates, Penny Frame, David Hanes, Lewis Perdun, Lynn Mark and all our other friends and helpers

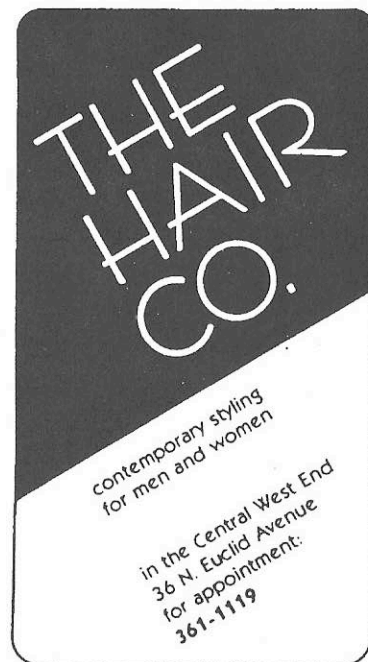
CHARIS board members (non-singing):

Glenace Humphrey, Linda Clark, Marilyn Stavenger, Joan Kernebeck, Donna Street, Rodney Strothcamp, James Pryor, Sarah Bridges, and Dennis Clodfelter

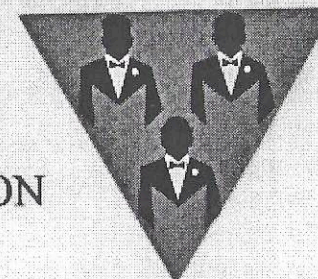
THE
ST. LOUIS
HILLS
DENTAL
GROUP
6979 CHIPPEWA
ST. LOUIS
MISSOURI
63109
(314) 644-0440



John O. Andreas, D.D.S.



GATEWAY MENS CHORUS
15TH ANNIVERSARY SEASON



SONGS OF THE SEASON

DECEMBER 14TH & 15TH:
GRANDEL THEATRE, GRAND CENTER, ST. LOUIS

DON YOUR GAY APPAREL AS THE GATEWAY MEN'S CHORUS WELCOMES DISTINGUISHED GUEST CONDUCTOR, SCOTT SCHOONOVER – ARTISTIC DIRECTOR OF THE ACCLAIMED UNION AVENUE OPERA THEATER, TO CELEBRATE THE SEASON IN OUR TRADITIONAL HOLIDAY CONCERT. SONGS OF SOLEMNITY, MELODIES OF MERRIMENT: OUR "AIRS" OF WINTER WILL WARM YOUR HEART!

GMC IS DELIGHTED TO BE RETURNING TO GRAND CENTER. TICKETS ARE \$20 AND \$25 AND WILL BE AVAILABLE FROM THE CHORUS OFFICE – 314-621-7286 OR FROM CHORUS MEMBERS.

SCHUCHAT, COOK & WERNER

ATTORNEYS AT LAW

SERVING LABOR UNIONS AND THEIR MEMBERS
FOR OVER 50 YEARS

LORETTA K. HAGGARD
ATTORNEY AT LAW
(314) 621-2626

THE SHELL BUILDING
1221 LOCUST ST., 2ND FL.
ST. LOUIS, MO 63103

CYCLE
5
BOOKKEEPING

Gary L. Johnson

(314) 652-5285
fax: (314) 652-0073
e-mail: CYCLE5@msn.com

3904 Laclede Avenue • St. Louis, Missouri 63108

Personalized Computer Accounting
Services for the Self-Employed and Small Businesses
Complete Tax Return Service

CHARIS SINGS THE BLUES

Emcee: Ken Haller

**at the Grandel Theatre
November 3, 2001**

**Matthew Chapman, piano
Gwen-Marie Lerch, bass
Jerry Oliver, drums**

The Birth of the Blues

*Words by B.G. DeSylva and Lew Brown
Music by Ray Henderson Arranged by Kirby Shaw
Featuring: Julie O'Guinn*

After You've Gone

*Words by Henry Creamer, music by Turner Layton
Arranged by Mark Brymer
Featuring: Susan McIntosh*

Cry Me A River

*Words and music by Arthur Hamilton
Jane Clark, soloist*

Tin Roof Blues

*Words by Walter Melrose
Music by the New Orleans Rhythm Kings
Linda Agnew, Dot Bailey, Cindy Fedders, M.S. Phillips*

Shakin' the Blues Away

*Words and music by Irving Berlin
Jane Clark, Dayna Deck, Sanae Furiya, Colleen Gilmore,
Loretta Haggard, Susan McIntosh, Sharon Spurlock,
Debbie Stover, Nadine Varner*

Corner of My Heart: The High School Sweetheart Song

*Words and music by Susan Drake
Susan Drake, soloist*

Miss Celie's Blues

*Words and music by Quincy Jones, Rod Temperton, and
Lionel Richie Arranged by J. David Moore
Featuring: M.S. Phillips on trumpet*

Mood Indigo

*Words and music by Duke Ellington, Irving Mills, and
Albany Bigard Arranged by Ed Lojeski
Featuring: Jane Clark*

Blue Bayou

*Words and music by Roy Orbison and Joe Melson
Arranged by Anita Kerr*

Intermission

Denise Thimes

Mary Had a Little Blues

*Words and music by Charles Collins
Arranged by Merry Keller
Julie Jennings, Debbie Lawson, Kristen Myers, Dina Young*

Blue Moon

*Words by Lorenz Hart, music by Richard Rodgers
Arranged by Jeff Funk*

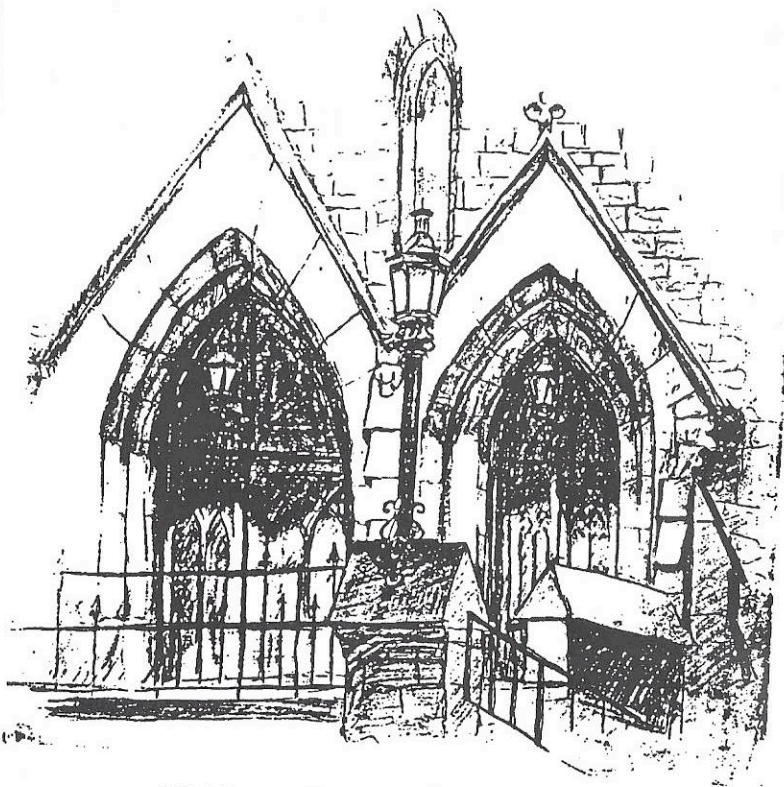
St. Louis Blues

*Words and music by W.C. Handy
Arranged by Kirby Shaw*

Bridge Over Troubled Water

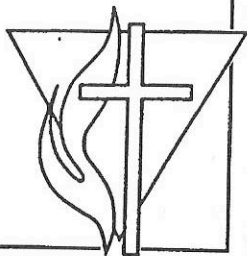
*Words and music by Paul Simon
Arranged by Kirby Shaw
Featuring: Denise Thimes*

*... A Stranger only once
at historic
Centenary Church*



**55 Plaza Square (16th & Olive)
St. Louis, MO 63103
314/421-3136**

**A Reconciling Congregation
of the United Methodist Church**



Who we are

CHARIS is a lesbian chorus open to all women. We differ in age, size, ethnic background, sexual orientation, and abilities but we share a goal to seek musical excellence, voice messages of social justice, and create a fun and supportive place for all women.

Membership information

CHARIS extends an open invitation for membership. Practices are currently held Tuesday nights from 7 to 9 at Centenary United Methodist Church. If you are interested in membership information or attending a rehearsal, please call 822-7580.

Mark Your Calendars

Don't miss these upcoming CHARIS performances, mark your calendars now to save the dates.

January 26, 2002

CHARIS will "open" for two women's *a cappella* groups from San Francisco: Kitka performing with Linda Tillery and the Cultural Heritage Choir at Edison Theatre, Washington University (8 p.m.)

May 24, 25, and 26, 2002 and May 31, June 1 and 2, 2002

CHARIS will collaborate with Gash-Voigt Dance Theatre at the Missouri Historical Society in the premiere performances of "Changing Woman," a musical work commissioned by Gash-Voigt. (8:00 p.m. on Friday and Saturday evenings, Sunday matinees at 2:30 p.m.)

And don't forget, the Gateway Men's Chorus is presenting "Songs of the Season" at the Grandel Theatre, December 14 and 15, 2001.

KINGSBURY ANIMAL HOSPITAL



Phone: 314-721-6251

Fax: 314-721-7513

Web Site:

<http://www.kah.com>

Hours by Appointment

Stephen A. Brammeier, D.V.M.



Dayna F. Deck

— Attorney —

Special Education Law (IDEA)

Employment Discrimination

314-721-2500

DOGTOWN GALLERY

& FRAME SHOP

644-3409

1206 Tamm Ave. (in Dogtown, St. Louis)

Full service Custom Framing and Design • Professional
One-on-One Service • Preservation Framing • Residential
& Commercial • Fast Turn Around • In-home & Office
Consultation • High Quality • Affordable Prices
Locally Owned & Operated

Bring in this AD
and receive

15% OFF

**Our Professional
Framing Services**

Program Statement of GALA Choruses, Inc.

GALA Choruses fosters the artistic and organizational development of member choruses through a wide variety of programs and services. We produce choral festivals, educational conferences and publications. We engage in advocacy; provide grants for the commissioning of new choral works; facilitate networking among our members; and serve as a resource center for choruses and individual members.

GALA Choruses serves choruses that range in size from five to 252 singers. Member choruses are located throughout North America, Europe and Australia.

GALA Choruses was formed in 1982 by 14 choruses. The association has grown ever since with new choruses joining at the rate of one per month. Individuals, small ensembles, businesses and other organizations may also join.

GALA Choruses is a 501(c)(3) not-for-profit corporation with tax-exempt status in the United States. Under the leadership of an international board of directors, GALA Choruses is based in Washington, D.C.

GALA Choruses, Inc.

P.O. Box 65084

Washington, D.C. 20035

202-467-5830

Fax: 202-467-5831

galachorus@aol.com

(CHARIS is a member of GALA Choruses, Inc).

Psychotherapy ▼ Supervision ▼ Workshops

Maxine Birdsong, LCSW
Gary L. Hirshberg, LCSW
Valorie M. Adrio, LMFT, ATR

(314) 367-2010

*Serving lesbians, gay men, bisexuals
and people affected by HIV*

 **Corporate**
seasonings

(314) 993-7100 • Fax (314) 993-7030

Best Choice in Business Catering
Box Lunches • Continental Breakfast
Hot & Cold Buffets

Call us for your Business Catering needs!

*Sally Fitzhugh & Lesley Proud
Owners & Managers*

Friends of CHARIS

Become a member of Friends of CHARIS and be a part of our future! You can help with a tax-deductible contribution, or by volunteering to assist with such things as concert production, publicity, writing for our newsletter, the *Quarter Note* or fundraising. You are needed to help keep CHARIS singing.

Yes!

I want to become a *Friend of CHARIS*

Please fill out the information below and drop it off at
our Friends table or mail to:

Friends of CHARIS
55 Plaza Square
St. Louis, MO 63103

Name(s) _____

Address _____

City _____ State _____ Zip _____

Telephone (Home) _____ (Work) _____

Email Address _____

My gift is in honor/memory of _____

- ☐ Please contact me about volunteering.
- ☐ Please do not publish my name in the concert program.
- ☐ Please do not add me to the CHARIS mailing list.

Gift amount

- ☐ \$25
☐ \$50
☐ \$100
☐ \$250
☐ Other \$ _____

PERSONAL AND BUSINESS LEGAL COUNSEL

Arlene Zarembka

Attorney at Law
Since 1974

Wills • Trusts • Estate Planning • Powers of Attorney
Beneficiary Deeds • Living Wills • Probate
Accident Cases • Personal Injury • Workers Compensation
Social Security Disability • Small Business
Real Estate • Security Clearances • General Litigation

225 SO. MERAMEC, SUITE 210, CLAYTON, MO 63105 PHONE: (314) 726-6355



Mayer Funeral Home

Thomas R. Kraus, Manager

4356 Lindell Boulevard
St. Louis, Missouri 63108

314.533.0293

314.533.6974 FAX

Friends of CHARIS

We would like to thank the following Friends of CHARIS for gifts (including in-kind donations) made during the last twelve months.

We sincerely regret any omissions or errors.

Linda Agnew and Dot Bailey
Gail Ahumada
Anton Bockelman
Philip Boyer and Steve Weirauch
Joan Brackmann
Joan Bray and Carl Hoagland
Sarah Bridges and Gail Doell
Jane Clark
A. Jean Clodfelter
Karen and Dennis Clodfelter
Laura T. Cohen
Corporate Seasonings
Martha and Michael Cramer
Betty Cross and Christine Klein
Darlene Dougherty
Teresa Dowdy
Jan Eudaley and Mary Lou Vehige
Cindy Fedders
Bridgit and James Gilmore
Loretta Haggard and Colleen Gilmore
Marcia and Gale Haggard
Robin Hinshaw
Mary Hizer
George Michael Hulsey
Glenace and Lloyd Humphrey
Julie Jennings and Susan Drake
Merry Keller
Jennifer Kelly
Jim Kelly
Joan Kernebeck

Friends of CHARIS, cont'd.

Deborah Lawson
Jane Levdansky and Joan Lafferty
Susan Lukwago
Jeanne McCamish and Dolores Anselment
Jane Miles and Chris Reinhard
Julie O'Guinn and Patty Pelikan
M.S. Phillips
Simeon Prager
Lesley Proud and Sally Fitzhugh
J.E. Robinson
Karen and T. Dwain Sell
Betty Shirley and Linda Mudd
Linda Shubow and David Howard
Betty Spurlock
Marilyn Stavenger
Michael Stortz and Guy Ranney
Debbie Stover
C. Alexah Strongheart
Marilyn Turner
Mia Ulmer
Margaret Van Diggelen
Lesley Wilson
Dina Young



Special thanks:

CHARIS gratefully acknowledges the generosity of the Regional Arts Commission and the Arts and Education Council of Greater St. Louis.

DINING OUT FOR LIFE

Tuesday, November 27, 2001
presented by MasterCard

*F*riendship is the wine of life.
Let us drink of it and to it at
Dining Out For Life, Tuesday,
November 27. For one special day,
119 area restaurants will donate
25% or more of their proceeds to
Saint Louis Effort For AIDS.

Please, mark your calendars today
and invite your friends, family and
co-workers to join you for this spe-
cial day. With your help, we can
reach our goal and raise \$128,000 to
provide education on the prevention
of HIV infection as well as critical
support services to our friends and
neighbors affected by HIV/AIDS.

For more information or a list of
participating restaurants, visit us
online at www.stlefa.org or call
314-645-6451.

Dining Out For Life.

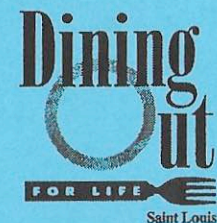
It just may be the most satisfying meal you have all year.



Saint Louis
EFFORT
FOR AIDS

UNTIL OCTOBER 31, 2001
1425 Hampton Avenue
St. Louis, MO 63139

MOVING NOVEMBER 1, 2001
1027 South Vandeventer
Suite 700
St. Louis, MO 63110



presented by



sponsored in part by

