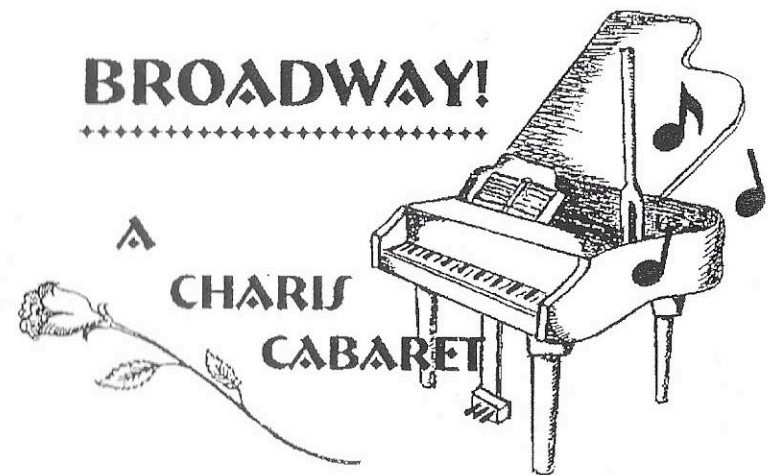




PRESENTS...

BROADWAY!



"BROADWAY! A CHARIS CABARET"

Shrewsbury Community Center

April 21 & 22, 2006 - 8pm



**Lafayette Park
United Methodist Church**

2300 Lafayette Avenue
St. Louis, MO 63104 * (314) 771-9214

Our Mission Statement:

*Lafayette Park United Methodist Church will
be a church without walls, creating a visible
sign of Christ's presence in our urban
community.*

YOU ARE WELCOME HERE!

CHARIS,
The St. Louis Women's Chorus

Aric Henson, Artistic Director

Presents

"Broadway! A CHARIS Cabaret"

*With Special Guests, The Klassy Kickers
and Steve Schneider as the Emcee*

Shrewsbury Community Center

April 21 & 22, 2006

Accompanist: Marilyn Short
Sign Language Artist: Glenace Humphrey



CHARIS receives financial assistance from the Regional Arts Commission

From The Board President

On behalf of the women of CHARIS I want to welcome you to the Shrewsbury Community Center for our spring concert, "Broadway! A CHARIS Cabaret" featuring the chorus and several special guests. A cabaret is defined as a speakeasy or a nightclub, among other things. Speakeasies were saloons selling liquor illegally during Prohibition. A nightclub is defined as a restaurant that stays open into the wee hours of the morning providing drink, music, and other entertainment. I can assure you that our cabaret fits into the nightclub definition - although wine is available!

CHARIS is pleased to share the stage with some great entertainers. First, we are honored to have Steve Schneider host our show tonight. Steve brings many talents with him, many of which you will experience tonight. We also welcome the Klassy Kickers back to the our concert stage. They will most assuredly *Razzle Dazzle* you. Making their debut with CHARIS tonight is the new dancing sensation, *Sonja and Ann*. You may even find a few familiar faces appearing throughout the show. Finally, CHARIS is honored to have the talents of our musicians and chorus dancers. It should prove to be a very entertaining evening.

We welcome our new members to their first performance as CHARIS women. We hope it will be the first of many for all of them. We are also glad to have some members returning to us. And for one member, this is the last concert with us, for now. So, Glenace, this one's for you. And Darlene, we miss you.

Thank you for coming to the show. We hope you enjoy your evening.

Sharon Smith

diversity in action...

Our ensemble engages in conversation, writing
sound, movement and theatrical exercises
to develop and perform material
around the culture of disability.



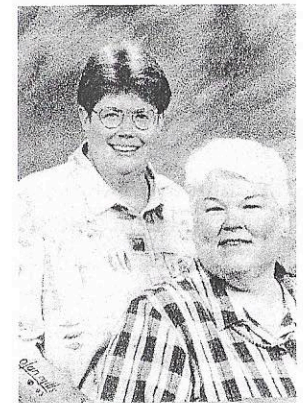
For more information,

visit
www.disabilityproject.com

or call
(314) 534-1454

*State Representative
Jeanette Mott Oxford and partner
Dorothy Gannon are proud to
support CHARIS.*

*Thank you
for music that inspires!*



Paid for by Citizens to Elect Oxford, J. Michael Vosler, Treas.
P.O. Box 19112, St. Louis MO, 63118
314-772- 0301; jmo4rep@juno.com; www.jmo4rep.com

From The Artistic Director

Willkommen! Tres Bien! WELCOME! It is my privilege as Artistic Director to welcome you to the final concert of CHARIS' 13th season. What a show these talented women have prepared for you. I am sure their excitement will be shared with you as we travel "The Great White Way." The Broadway music genre has been a passion of mine for many, many years. In fact I had more trouble selecting music for this program than any of the programs in my 2-year tenure with this FABULOUS group. I hope that you will note that it is impossible to have a performance of all of the best Broadway music; there simply is too much! I finally settled on music both tried and true and brand new, weaving them together to achieve a cabaret effect.

The musicians you see before you tonight have truly given their all for this concert. Many hours of rehearsal time, extra practices, searching for the perfect costume, choreographing the dancing and movement, and memorizing all the music are just a few tasks the women have mastered. I applaud their dedication to this concert as well as to each other.

From the many antics of our fabulous emcee Steve Schneider, to the elegant kick lines of the Klassy Kickers and the scrumptious samba of Sonja Furiya and Ann Taylor, this concert is sure to provide entertainment galore! The women of CHARIS and I offer our gratitude to these individuals for helping make this concert one the most energized experiences we have had. Special thanks to our accompanist, Marilyn Short, who is joining us in concert for the first time. We hope that she has had as much fun as we have. Thanks also to backup musicians Jerry Oliver and Gwen-Marie Lerch for their expertise.

I invite you all to sit back, have a drink and enjoy the surprises in store for you!

Aric Henson



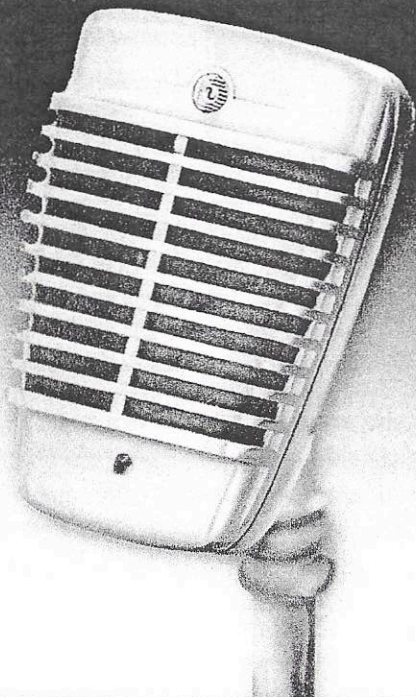
A Catholic Lesbian and Gay Ministry
For information call:
Marge O'Gorman, FSM
314 776-0363
mogormanfsm@sbcglobal.net
www.friendshipandjustice.org

St. Margaret of Scotland and St. Pius V Parishes
Welcome members of the LGBT community,
their families friends and allies.
Join us for prayer and Eucharist.
We need your gifts of leadership and service.
We invite you to build church with us.

Best Wishes for an Amazing Concert!

Rev. Kathleen Wilder

**We're thrilled to lend our voice
in support of tonight's program.**

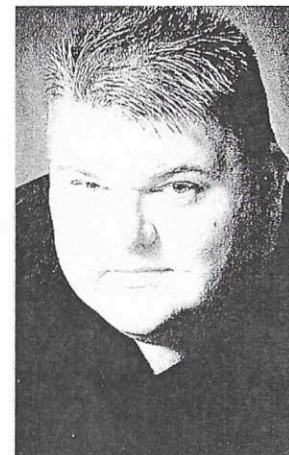


VOICE
newspaper
WWW.THEVITALVOICE.COM

**Proud Supporter of Charis and
"Broadway"**

**Vital VOICE is the bi-weekly progressive independent
newspaper serving the St. Louis metropolitan area, Missouri,
as well as Southern Illinois.**

Artistic Director - Aric Henson



Aric Henson received his musical training at Jefferson College and The University of Missouri, St. Louis. He previously served as director of the GMC Ensemble, Associate Director of the St. Louis Symphony Children's Choir and music director of Faith UMC. He is also a former adjunct faculty member with Jefferson College, where he led the Jefferson College Singers, the Starlight Show Choir and taught private vocal lessons. He has also taught in public and private school settings. Aric also serves as guest conductor and adjudicator for various music festivals. Currently he is on staff at Woodlawn Chapel Presbyterian Church, where he directs The Adult Hand Bell Choir and the Chancel Choir. He also runs a private voice studio in the St. Louis area.

Henson's life revolves around music. He loves to teach and perform and that love has taken him on tours in cities such as Prague, Vienna, Salzburg, Munich, New Orleans, Little Rock, San Antonio, Dallas and Austin. Aric holds affiliations with such distinguished music organizations as Music Educators National Conference, Missouri Music Educators Association, American Choral Director's Association and The Missouri Choral Director's Association.

Aric would like to thank the members of CHARIS for their hard work and determination. Thanks also to Scott for his amazing love.

CHARIS, The St. Louis Women's Chorus

A Herstory

CHARIS was the realization of the dream of its founders Cindy Sohn and Juliet Jackson. With the guidance and support of the Gateway Men's Chorus (GMC), they organized the Committee to Unite Women Singers in the fall of 1992, with the goal of creating a chorus open to all women, regardless of cultural background or musical experience. CHARIS has always been a non-auditioned chorus.

Twenty-five women attended the first meeting of the chorus held in January, 1993. An acting Board of Directors was appointed at that time to organize and direct the activities of the chorus. CHARIS was granted status as a not-for-profit organization by the State of Missouri on September 27, 1993, and received confirmation of its tax-exempt status as a 501c(3) corporation in July, 1994.

The chorus made its first public appearance on May 23, 1993, at Trinity Episcopal Church in a fund-raiser to benefit North side AIDS Outreach. Shortly thereafter CHARIS took the stage with The Gateway Men's Chorus to perform at the latter's Pride Concert in 1993. CHARIS made its solo debut in October, 1993, and has subsequently produced two to three solo performances along with community benefits each year.

Chorus highlights include a performance at the "Notes From Home" series at the Sheldon Memorial on January 24, 1995, at which time the chorus recorded "Dream In Color," its first commercially released tape. CHARIS hosted and performed at the 1995 Gay and Lesbian Association of Choruses (GALA) Leadership Conference for delegates from around the U.S. and a number of foreign countries.

In 1996 CHARIS proudly performed in Tampa, Florida at GALA Festival V. Our performances have benefitted the Cathedral Mission Society, The Names Project, Metropolitan Food Pantry Association,

Habitat for Humanity, and Parents, Families and Friends of Lesbians and Gays (PFLAG).

Merry Keller came to CHARIS as Interim Director in 1999. Merry's exceptional leadership skills and strong background in music both as a performer and teacher provided valuable assets to the chorus. Merry accepted the position of Artistic Director in January, 2000. Many wonderful concerts ensued under her direction. Highlights include "Sing for the Cure," a concert benefitting the Susan G. Komen Breast Cancer Foundation in June, 2001 and our tenth anniversary concert, "A Decade of Song," featuring special guest artist Holly Near.

Another era in CHARIS' herstory began in our 12th season, with the leadership of new Artistic Director Aric Henson, former director of the Gateway Men's Ensemble. Aric has directed CHARIS in "Postcards: Journeys of the Heart," at the New City School, "In The Groove" at the Shrewsbury Community Center and "Fired Up!" at the Missouri History Museum.

As CHARIS finishes its 13th season, it begins a new chapter in its history. In January 2006, the chorus officially moved to a new rehearsal space and home at Lafayette Park United Methodist Church. An important factor in this decision was a commitment to greater accessibility. The church's elevator makes it possible for those with disabilities to become a member of CHARIS, serve on its Board of Directors, or attend other chorus functions.

With a talented board of both singers and non-singers addressing management issues, the chorus is looking forward to sharing its voices and vision with its audiences for many years to come.



Coming Up For CHARIS.....

May 23

**CHARIS performs at SLOCA benefit
concert, 7:15 p.m. at The Sheldon**

June 25

CHARIS performs at PRIDE

November 18

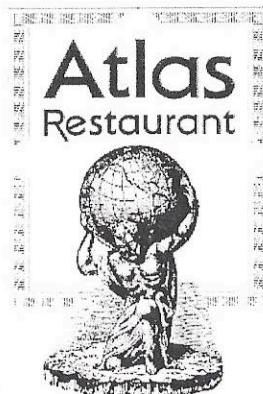
**Fall concert saluting the "Legends"
8 p.m. at the Missouri History
Museum**

Kingsbury Animal Hospital



We provide sensitive, quality medical care for companion animals in accordance with each client's emotional and financial needs. Our practice is a friendly workplace encouraging personal and professional growth with understanding and respect for the individual differences of co-workers, clients and the animals placed in our care.

Stephen A. Brammeier, DVM
Kim Lynch, DVM
420 N SKINKER
SAINT LOUIS, MO 63130
Phone: (314) 721-6251
Fax: (314) 721-7513
kingsbury.vetsuite.com



5413 PERSHING • ST. LOUIS, MO 63112

DINNER • TUE-SAT • 11:00 TO 10:00
DESSERTS • FRI-SAT • 7:00 TO MIDNIGHT

314-367-6800
WWW.ATLASRESTAURANT.COM



David J. Prelutsky, M.D., F.A.C.P.

Internal Medicine

Catherine Williamson, F.N.P.

Nurse Practitioner



**2340 Hampton Avenue
St. Louis, Missouri 63139
(314) 647-2200**

Now Accepting New Patients



Four groups of exclusively women performers using music to raise awareness of the symptoms of ovarian cancer

At the Sheldon Concert Hall, Tuesday, May 23, 7:15 p.m.

The Laclede Quartet — “One of the highest quality classical groups in St. Louis”. —Larry Connors, KMOV-TV.

The Equinox Chamber — a classical ensemble providing a repertoire representing the musical heritages of many ethnic traditions

CHARIS — The St. Louis Women’s Chorus is a diverse chorus open to all women.

River Blenders Chorus — the 101 plus member chorus of Sweet Adelines dedicated to four-part, a cappella harmony — currently ranked 13th in the world.

Joan Lipkin — founding artistic director of *That UPPITY Theatre Company*, will serve as the evening’s MC.

All Proceeds benefit St. Louis Ovarian Cancer Awareness, a volunteer organization dedicated to raising women’s awareness of the signs and symptoms of ovarian cancer.

Tickets are \$15.
Call 314 849 3970
for reservations.

Massa's *of course!*

“Rompa un Piedino”

See your friends before
or after the show!

Do You Have a Massa's Story?

Dear CHARIS and Friends of CHARIS,

Isn't it amazing that 13 years have come and gone so quickly! Yes, it all started in December 1992 at the "afters" party on the Washington University Campus for the Gateway Men's Chorus. What an intriguing evening that was! First, Michael McKinley dressed me in his fantastic red sequined dress (thank you Michael) and second, I met Jane Clark, Cindy Sohn and Juliet Jackson (Linda Clark enjoyed the evening, too). That night was not only a time to enjoy the culmination of hard work preparing for a successful concert, but it also had the added benefit of being a fundraiser for CHARIS, the fledgling St. Louis Women's Chorus. It was great seeing "brothers" and "sisters" showing their love and support for each other. I wanted to be a small part of this groundbreaking venture! And what a night it turned out to be. WOW! I was asked to interpret the first-ever CHARIS concert, and the rest, as they say, is history.

I've had the privilege to interpret great, thought-provoking music by Holly Near, Kati and so many more; music honoring women who have paved the way for us to achieve great and small successes, women who have sacrificed so much for humanity. Being on stage with Joan Lipkin (our very own playwright and so much more!) and the DisAbility Project brought an awareness of the abilities and disabilities we all have and share. Oh, let's not forget the fun times; those "hot" nights in Tampa, Florida at the GALA Festival, the sizzling music of laughter and love - love gotten, forgotten and blossoming again. You can't beat it.

To our fantastic and faithful audience and friends; you made my time with you so fulfilling and joyous. I hope you have a greater appreciation of the beauty of American Sign Language and the acceptance of the deaf among you that, in turn, makes me love you all even more.

And to the women of CHARIS; you have always been an inspiration. The trials and tribulations you've faced with love and grace has taught me so much. I appreciate all that you have given and continue to give. I will sorely miss you and cherish the amazing times we've shared. Aric, I will never forget your acceptance and support; you've been a wonderful addition to our "family."

CHARIS and friends, thank you so much for the thrill of a lifetime, I will always remember and treasure the time I shared with you. I wish you all the very best.

Love, Glenace

Sign Language Artist - Glenace Humphrey

Glenace has interpreted for CHARIS since it was founded in 1993, and marks her 29th year as an interpreter in 2005. She is a staff interpreter for Deaf Inter-Link as well as a freelance/community interpreter. Glenace is in her fourth season working hand in hand with Charlie Robin, Managing Director of the Edison Theatre at Washington University. In January, 2004, she had the pleasure of interpreting there for Kate Clinton. Glenace holds national certification from the Registry of Interpreters for the Deaf (RID). She currently holds the position of RID Region IV Representative, which represents 14 states and three provinces in Canada. She has interpreted in many places in the U.S. and also in Japan and Europe.

Glenace has attended the GALA choral festivals since 1989. Her initiation to GALA was in Seattle interpreting for the Denver Women's Chorus. Later festivals took her to Denver, Tampa, San Jose and most recently to Montreal with the Gateway Men's Chorus. She has interpreted for Bruce Villanche, John Kerry, Maya Angelou, Nell Carter and President George W. Bush. Jeffrey Maynard and the New York City gay Men's Chorus invited Glenace to perform with them in Carnegie Hall in December of 2001 and in June of 2002 with Armistead Maupin. She recently had the honor of interpreting for Ann Hampton Callaway at the Pageant, and Stephen Schwartz, Liz Callaway and Scott Coulter at the Edison Theatre at Washington University. Glenace loves sharing the poetry, inspiration and laughter of music through sign language with the deaf and hearing communities. She is also proud to mention Lloyd, her husband of 37 years, her daughter, son-in-law and two grand-daughters.

Set Designer - R. E. Dix

Dix has been an art teacher in the metro St. Louis area for the past 17 years. She currently serves as Technical Director for the District's high school drama department by helping students learn to design and construct scenery for theatrical productions. She gained her technical experience in the mid 80's as a technical assistant for Meramec Theatre. While at Meramec she earned her Associate's Degree in Commercial Art and Advertising Design. Dix holds a B.A. in Studio Art with an emphasis in art education from SIUE. In 1995, she received a MAT in Instructional Media Technology from Webster University. Dix became involved with CHARIS through her friends and has enjoyed her association with the chorus.

Accompanist - Marilyn Short

Marilyn Short has a Bachelor of Science degree and a Master in Accounting degree, both from Kansas State University. She is in her first year as accompanist for CHARIS, her fifth year as accompanist for the Webster Groves High School choral program, and her eighth year as organist for the Second Baptist Church of Greater St. Louis. She is a member of the American Guild of Organists.

Marilyn is married to Brad (head of the Music Library at Washington University), mother of Renee (freshman at Washington University) and Jessica (sophomore at Webster Groves High School and CHARIS singer), and owner of a dog named Tickles (black Lab mix).



**GATEWAY TO
THE WILD WEST**
THE FIFTH ANNUAL POPS CONCERT

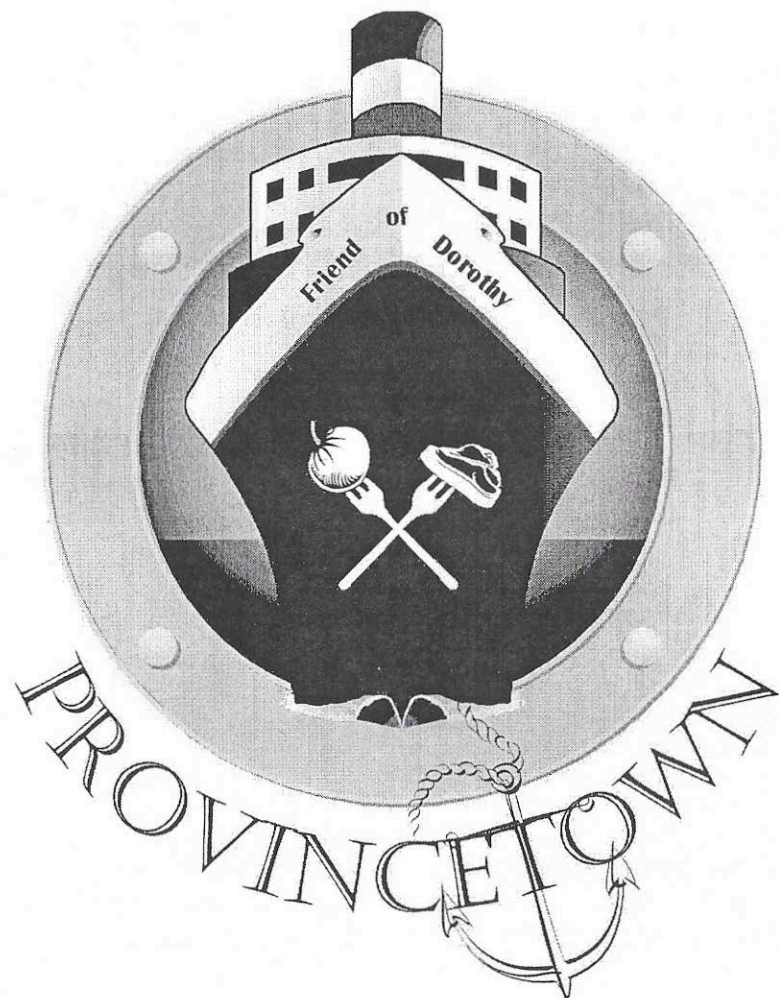
SATURDAY, MAY 20
E. DESMOND LEE CONCERT HALL
AT COMMUNITY MUSIC SCHOOL
OF WEBSTER UNIVERSITY
560 TRINITY AVENUE - AT THE WEST END OF THE LOOP

ADMISSION IS FREE

Band Together
WWW.BANDTOGETHERSTL.COM

Coming Attraction

THE VEGANS OF



**Maiden Voyage
April 2007**

V

RATED V FOR SOME VEGETABLE VIOLENCE
AND GRATUITOUS CARNIVORE CONTENT.

Make plans to set sail with CHARIS on April 27th and 28th next year as we embark on a rollicking voyage in "The Vegans of Provincetown," a culinary parody of Gilbert & Sullivan's famed operetta "The Pirates of Penzance." Already we're hard at work on this fully staged production, written by, and featuring the women of CHARIS. You'll laugh at the songs about tofu, you'll cry as the onions are sliced, you'll gasp at the fight scenes where actors brandish real carrots!!! "The Vegans of Provincetown" is sure to ap-peel to everyone!!

How can I get involved now, you ask? Simple! Help by making a donation to our production costs by filling out the form below for the ingredient level which works best for you. Thank You!!

Yes, I'm onboard for "The Vegans of Provincetown"!! Enclosed is my donation to help ensure that CHARIS' culinary voyage is a successful one.

- _____ \$15 Onion
- _____ \$25 Tofu
- _____ \$50 Tomato
- _____ \$100 Carrot
- _____ \$??? Parsley

**Please return this form
along with your check
made out to: CHARIS -
The St. Louis Women's
Chorus, and mail to:**

**CHARIS
c/o Lafayette UMC
2300 Lafayette
St. Louis, MO 63104**



Thank you for your support!!



Who We Are

CHARIS is a lesbian chorus open to all women. We differ in age, size, ethnic background, sexual orientation and abilities but we share a goal to seek musical excellence, voice messages of social justice, and create a fun and supportive place for all women. We are a non-auditioned chorus.

Membership Information

CHARIS extends an open invitation for membership. Rehearsals are currently held Tuesday nights from 7 to 9:30 at Lafayette Park United Methodist Church, 2300 Lafayette Ave. If you are interested in membership information or attending a rehearsal, please call (314) 664-9340. We are accessible to those with disabilities

Board of Directors

Sharon Smith, President

Candice Freeman, Vice President

Terri Velasco, Treasurer

Marilyn Stavenger, Recording Secretary

Jane Clark Linda Clark

Nancy Folk* Dina Young

Bill Byrd* Kris'ten Wozniak

Felicia Scott Kendra Henry

Pat Henry Sherry Angus

Kathy Duncan

* Denotes non-singing member

I Want To Be a Friend Of CHARIS

Name _____

Address _____

City _____ State _____ Zip _____

Phone _____ Email _____

☐ Do not publish my name

My donation is in memory/honor of:

_____ \$25 _____ \$35 _____ \$50 _____ \$100 _____ Other

CHARIS
c/o Lafayette Park UMC, 2300 Lafayette Ave.
St. Louis, MO 63104

Concert Etiquette

As a courtesy to the performers and audience members we ask that you silence all electronic devices such as cellular phones, pagers, and digital watches before the concert begins. Recordings and flash photography of this performance are not permitted.

Enjoy the concert and thank you for your support of CHARIS!

CHARIS, The St. Louis Women's Chorus

"Broadway! A CHARIS Cabaret"

Act I

Cabaret

Arr. by: Kirby Shaw
By: Kander/Ebb

There's No Business Like Show Business (Annie Get Your Gun)

Arr. by: Mark Brymer
By: Irving Berlin

South Pacific Medley

Arr. by: Anne Albritton
Soloists: Dina Young, Kristen Meyers, Susan McIntosh

42nd Street

Guest Artist: The Klassy Kickers
Solo: Jane Clark

Le Jazz Hot (Victor Victoria)

Small Group: Jane Clark, Dina Young, Nadine Varner,
Kristen Meyers

Sisters (White Christmas)

Arr. by: Kirby Shaw
By: Irving Berlin
Small Group: Linda Clark, Barbara Gilchrist, Suzanne Davis,
Sherry Angus, Jessica Girard, Georgia Johnston, Carol
Weisman

Anything You Can Do I Can Do Better (Annie Get Your Gun)

Arr. by: Anita Kerr
By: Irving Berlin
Soloists: Julie Lynch, Kendra Henry

On My Own (Les Misérables)

Arr. by: Ed Lojeski
By: Claude-Michel Schonberg, Herbert Kretzmer
Solo: Terri Velasco

Somewhere (West Side Story)

Arr. by William Johnson
By: Leonard Bernstein, Stephen Sondheim
Small Group: Susan McIntosh, Dayna Deck, Kourtney Strade

Mama, I'm A Big Girl Now (Hairspray)

Arr. by: Roger Emerson
By: Shaiman/Wittman
Solo: Carol Weisman

Act II

Seasons Of Love (Rent)

Arr. by: Roger Emerson
By: Jonathan Larson
Soloists: Julie Lynch, Kris'ten Wozniak

All That Jazz (Chicago)

Arr. by: Kirby Shaw
By: Kander/Ebb

Razzle Dazzle (Chicago)

Guest Artist: The Klassy Kickers
Solo: Steve Schneider

Beauty School Dropout (Grease)

Arr. by: Mac Huff
By: Casey/Jacobs
Small Group: Kendra Henry, Deb Salls, Sara Downing,
Kris'ten Wozniak, Jayme Christenson, Jessica Short,
Cassie Fremder, Shannon Henderson, Summer Skinner

The Ladies Who Lunch (Company)

By: Stephen Sondheim
Small Group: Nancy Phillips, Dina Young, Sharon Spurlock

For Good (Wicked)

Arr. by Mac Huff
By: Stephen Schwartz
Solo: Kim Gruner

Hello Dolly

Arr. by: Kirby Shaw
By: Jerry Hermann

CHARIS

The St. Louis Women's Chorus

Aric Henson, Artistic Director

Marilyn Short, Accompanist

Glenace Humphrey, Sign Language Artist

Sopranos

Jane V. Clark

Deb Salls

Kristen Meyers

Pat Henry

Kendra Ellen Henry

Kathleen Duncan

Susan McIntosh

Jessica Short

Dayna Deck

Summer Skinner

Sara Downing

Linda Clark

Julie Lynch

Carol Weisman

Angie O'Gorman

Jayne Christenson

Sharon Smith

Kim Gruner

Kris'ten Wozniak

Penny Frame

Jessica Girard

Altos

Barbara Gilchrist

Charlotte Ellis

Dina Young

Terri Velasco

Nancy Phillips

Candice Freeman

Kim Powlishta

Shannon Henderson

Cassie Fremder

Sharon Opp

Sharon Spurlock

Susanna Roe

Sherry L. Angus

Nadine Varner

Georgia Johnston

Kourtney R. Strade

Katie Roberts

Suzanne Davis

Guest Artists:

Steve Schneider

The Klassy Kickers

Sonja Furiya & Ann Taylor

Musicians:

Jerry Oliver, Drums

Gwen-Marie Lerch, Bass



Way to go, Carol!

From Your Fan Club,

Teddy & Jono Carol & Frank

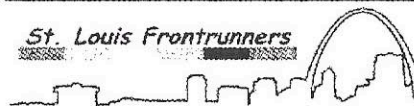


Acknowledgments

CHARIS gratefully acknowledges the help of the following persons in the preparation of this concert, as well as the generosity of the Regional Arts Council

Performance Committee: Jane Clark, Linda Clark, Darlene Dougherty, Terri Velasco, Aric Henson, Steve Schneider
Set Design: R.E. Dix
Set Construction: R.E. Dix, Sharon Smith, Lloyd Humphrey, Sharon Opp
Stage Manager: Tracy Utz
Lighting: R.E. Dix, Pat Moran
Sound: Don Ellis, J.J. Dugger
Choreography: Julie Lynch
Music Librarian: Kim Powlishta
Rehearsal CD Production: Susan McIntosh
Grant Writer: Sharon Spurlock
Public Relations: Linda Clark, Candice Freeman, Sharon Opp
Program Book: Linda Clark
Program Cover: Ken Curtis
Venue Liaison: Kendra Henry
Volunteer Coordinator: Charlotte Ellis
Colleen Gilmore, Loretta Haggard, Pat Moran, Carolyn Stahlhut, Emily Morrison, Vicki Staples, David Hanes, Felicia Scott, Nancy Folk, Sheila Muhlbaier, Debra Knox-Deiermann, Barbara Weisman, Pat Gallagher
Concert Supplies: Kim Powlishta, Candice Freeman, Sharon Opp, Julie Lynch, Pat Henry, Linda Clark, Suzanne Davis, Jane Clark, Dayna Deck, Susan McIntosh, Penny Frame, Angie O'Gorman, Carol Weisman, Barbara Weisman, Nancy Folk, Susanna Roe, Sharon Smith, Jessica Short, Marilyn Short, Nancy Phillips, Kim Gruner, Kristen Meyers, Dina Young, Charlotte Ellis, Kathy Duncan, Georgia Johnston, Barbara Gilchrist, Sharon Spurlock

St. Louis Frontrunners



**Meet new friends!
Enjoy Forest Park!
Improve your fitness!**

St. Louis Frontrunners is a non-competitive club open to people of all fitness levels who are interested in getting outside to exercise. We are a group of low-key, friendly women and men meet each week to walk or run. You'll find us in Forest Park at the Visitor and Education Center (formerly the Lindell Pavilion) on Saturdays at 9:00am and Tuesdays and Thursdays at 6:00pm.

Want more info? Call Rita at (314) 645-7436 or John at (314) 771-1571. Or visit www.stlouisfrontrunners.org.

Join us for a friendly combination of socializing and fitness!



**Let Us Entertain You!!
Musical Revues • Tap • Jazz**

The Klassy Kickers

SUZE SCHWARTZ, Choreographer / Director
432-2418

JAN MEYER, Director, JCC Senior Arts Center
432-5700, ext. 3179

Dr. William Madosky

- FAMILY CARE
- WELLNESS PROGRAMS
- ACUTE/CRONIC PAIN RELIEF
- SPORTS INJURIES
- WORK INJURIES
- ACCIDENTS

Committed to . . .

*Promoting health, treating injuries
and helping you improve your life.*

(314) 644-0885

Esquire Sports Medicine
1202 Bellevue • Richmond Heights, Missouri 63117
www.drmosky.com

Friends of CHARIS

We would like to thank the following people for gifts (including in-kind donations) and general support made during the past twelve months:

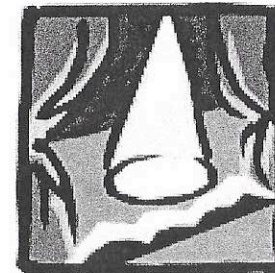
Lloyd Humphrey	Ten Mile House
Sharon Spurlock	Rockin' Gators
Betty T. Spurlock	Kim Castro
Betty Cross & Kit Klein	Val Iaconna
Jane Levdansky & Joan Lafferty	Novak's
Susan M. Commons	Candice Freeman
Elisa S. Forgelman	Marilyn Stavenger
BJ McGough & Karen Hagrup	Charlotte Ellis
- in honor of our mothers	KaBloom
Marilyn Turner	Joan Bray
- in memory of Etta Van Diggelen	Wolf Camera
Jane Clark	Ameristar Casino
Merry Keller	Colleen Moran
Marge Van Diggelen	Beth Banholzer
Peg Atkins	The Spot
Rev. Dr. Deborah Lawson	Freddies
Immanuel Congregational Church	Jerry Woods
Martha Ficklen & Nan Sweet	Barbara Weisman
Kathy Morris & Gwen-Marie Lerch	Aric Henson
Cindy Fulton & Sarah Colony	Casey Fitzhugh
David Bates	Patrick Fitzhugh
Katherine Bish	Don & Joyce Varner
Pat Henry	Rev. Betty L. Shirley
Josh Powlishta	Sonja Furiya
Colleen Gilmore & Loretta Haggard	
Jan Edmiston	
Cynthia Stranis	
Claire Wyneken	
David Hietter - Creative Catering	
Joan Lipkin & The DisAbility Project	
- in memory of Lisi Bansen	
Members of MCC Living Faith	

Guest Artist - Steve Schneider

Steve Schneider has been performing as a professional pianist and vocalist in the St. Louis area for the nearly 24 years. He is primarily self-taught, picking out melodies on the piano that he heard on the radio and that he learned in violin lessons. His mentor was the legendary Ceil Clayton, who performed as a pianist and vocalist in the St. Louis area from the 1940's until her death in 1997.

Steve performed at The Drake piano bar for almost 10 years, and appears occasionally at Westwood Country Club, as well as various private parties. He also entertains for various senior citizens groups such as Covenant House and Shaare Emeth. He has been an active member of the Gateway Men's Chorus since 1994, and has served in various capacities within the organization. Steve has the distinction of being the first guest artist to appear with Band Together in the pops concerts of 2001 and 2003 as a big band vocalist. He is delighted to be making his first appearance as guest artist and emcee with CHARIS.

Steve can be heard performing regularly at Massa's Restaurant in Kirkwood on Friday evenings from 8:30 – 11:30 p.m., as well as other venues around St. Louis. Steve would like to thank his following of friends and fans for all their love, support, and appreciation through the years.



THE GREAT FRAME UP

Where Picture Framing is an Art

Bruce E. Shoults
Owner

Custom Framing

Hours: Monday-Saturday 10-7pm, Sunday 12 Noon-4

22 North Euclid Ave. St. Louis, MO 63108

Tel: 314-367-9333 Fax: 314-367-1295

www.euclid.thegreatframeup.com bshoultsstl@msn.com

JOAN M. BRACKMANN, M.A.
LICENSED PROFESSIONAL COUNSELOR
EMDR

INDIVIDUALS > COUPLES | **PSYCHOTHERAPY**
NATIONALLY CERTIFIED PSYCHOLOGIST

tel 314.664.9766

3672B ARSENAL STREET, SAINT LOUIS, MISSOURI 63116

OFFICE:
(314) 621-2626

FAX:
(314) 621-2378

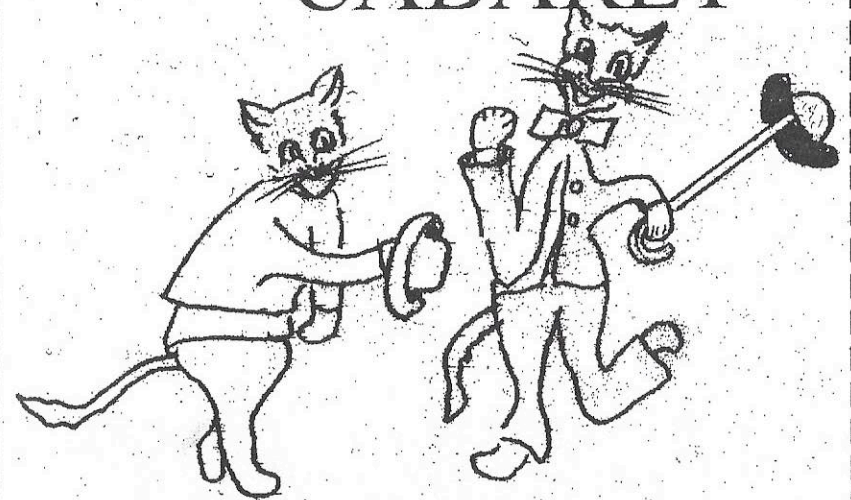
SCHUCHAT, COOK & WERNER
ATTORNEYS AT LAW



LORETTA K. HAGGARD
ATTORNEY AT LAW
LKH@Schuchatew.com

THE SHELL BLDG., 2ND FLOOR
1221 LOCUST STREET
ST. LOUIS, MO 63103

CONGRATS TO CHARISBRINGING BROADWAY CHARIS' OWN..... CABARET



Judy Miniace

Psychotherapy ▼ Supervision ▼ Workshops

Maxine Birdsong, LCSW
Gary L. Hirshberg, LCSW
Valorie M. Adrio, LMFT, ATR

(314) 367-2010

Serving lesbians, gay men, bisexuals and people affected by HIV

Creative
Catering



DAVID HIETTER

Phone or Fax
(314) 434-1050

Chef & Owner

DAYNA F. DECK

ATTORNEY AT LAW

393 N. Euclid, Suite 245
St. Louis, MO 63108
tele: 314-361-9900
fax: 314-361-9903
email: dayna.deck@sbcglobal.net

IDEA • REHAB ACT/SECTION 504
DISCRIMINATION • FERPA • DISCIPLINE

*a special attorney
for special kids*

Blended, *extended*, single parent, childless,
married, engaged, _____, *supportive*, traditional,
functional, *untraditional*, g/l/b/t, _____, adoptive,
dysfunctional, funny, **multi-racial**, same sex, **loving**,
interesting, _____, multigenerational, *caring* . . .

No matter what words you use to describe **your family**,
they are welcomed to join **our family**.

First Unitarian Church of St. Louis

5007 Waterman Blvd.
(corner of Kingshighway & Waterman)

in the Central West End

Sunday School
and Worship Services
9:30 & 11:00

Rev. Suzanne Meyer
Minister

office: 314-361-0595
www.firstuustlouis.org



Heartland Healthy Voices

Kourtney R. Strade,
M.A.

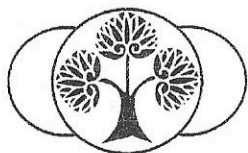
Vocal Health Specialist

Karen M. Mills,
M.A. CCC-SLP
Speech Pathologist

314.368.1107

www.heartlandhealthyvoices.com
email@heartlandhealthyvoices.com

Singing Training . Vocal Health Seminars .
Transgender Voice Training



Joy Allen
LCSW, M. Div.

*Relationship Skills
Open Perspective
Life Transitions*

314.918.1003

INDIVIDUAL, COUPLE & FAMILY COUNSELING

758 Chamberlain Place, Suite 103, Webster Groves, MO 63119



CHAMBER JAZZ

Patrick Welch
314-961-0255



Arlene Zarembka

Attorney at Law

225 So. Meramec, Suite 210
Clayton, Missouri 63105

(314) 726-6355



the **GATEWAY MEN'S CHORUS** presents

put your raybans on

put the top down

turn the radio up

CRUISIN' DOWN ROUTE 66

The rhythmic 50s and 60s sounds will make the trip worth taking.

at the **EDISON THEATRE**, 6445 Forsyth Blvd

June 23 & 24, 8:00pm

Purchase tickets online at www.gatewaymenschorus.org or visit Botanicals on the Park or Left Bank Books.
Call 314.621.7286 or MetroTix at 314.534.1111.


~~~~~  
**BROADWAY**

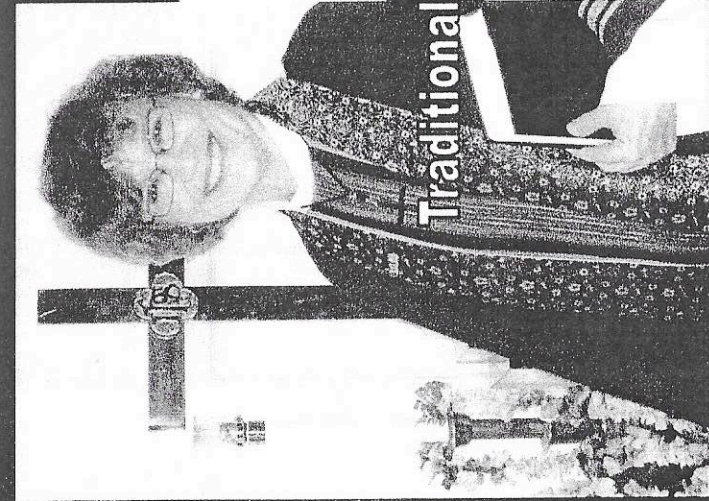
~~~~~  
BROADWAY
~~~~~

**BROADWAY**  
~~~~~

CHARIS *is bringing*
it to St. Louis
in
CABARET



Ken Curtis



GOT GOD?

WHEN THE PASTOR IS A
"FAMILY" MEMBER, YOU KNOW
THAT YOU HAVE COME HOME

Traditional Church for a Non-Traditional Lifestyle

Rev. Dr. Deborah A. Lawson, Pastor
Immanuel Congregational UCC
3460 Jamieson Avenue 314-645-8956
www.immanuelwelcomesyou.org

MENTION THIS AD AND GET A FREE PRAYER

Questions May Hold The Answers You're Needing

When it comes to your job, are you fired up or burned out?
This simple career quiz could hold the answer.

How do you feel about Mondays?

- a. I look forward to Monday morning.
- b. I dread Monday mornings and look forward to weekends.

Do you watch the clock?

- a. When I'm at work, time flies by.
- b. I seem to watch the clock and most days it drags by slowly.

Feel like taking a gamble?

- a. I am not really a big "gambler."
- b. I find myself buying lottery tickets more lately and daydreaming about winning and quitting my job.

How's your health?

- a. I am in good health, generally speaking.
- b. I am having lots of small, unexplainable physical ailments and pains.

How's your boss?

- a. I know my boss always supports me.
- b. I really wonder what my boss says when someone speaks badly of my performance.

To find out what your answers say
about your career situation and to take
the **FREE** complete and simple 20-question
quiz, visit **www.activ8careers.com**.

No purchase or obligation required.

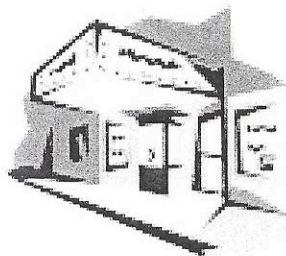
Your answers may amaze you.

And, they may set you on a career
adventure that will change your life.

activ:

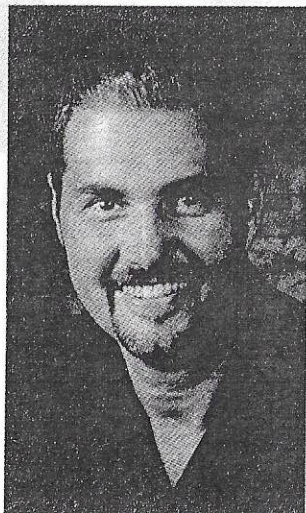
activ:8 career coaching
making your 8-hour work day work for you.

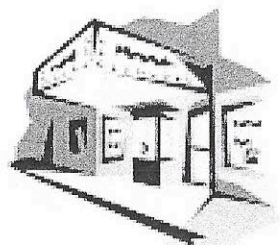
(314) 966-3888



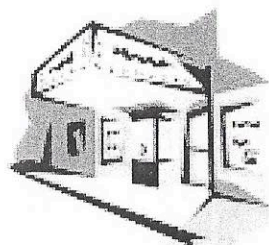
Notes

david hults

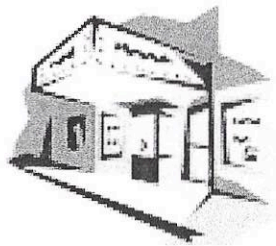




Notes



Notes



Notes

FOOD OUTREACH
CONGRATULATES
CHARIS

FOR FILLING
OUR WORLD WITH SONG!



3117 OLIVE STREET ST. LOUIS, MO 63103
314.652.FOOD (3663) WWW.FOODOUTREACH.ORG

Save The Date
A Tasteful Affair 18
Sunday April 30, 2006
Chase Park Plaza