



ST. LOUIS SOUND

15 MAY, 2022 // 7PM

ROUTE 66 ★ THE TROLLEY SONG ★
RESCUE ME ★ ST. LOUIS BLUES ★
AND MORE!

535 GARDEN AVE., WEBSTER GROVES 63119

WWW.CHARISCHORUS.ORG





We would like to thank our generous

GRACE NOTES

for their unwavering support.



You can become a

GRACE NOTE

at bit.ly/charis-donate

Make a sustaining donation by joining our monthly “Grace Note” program, which allows you to make a contribution every month. Your gift renews automatically until you decide to stop it.

CHARIS is a 501(c)3 charitable organization and your donations are tax-deductible as allowed by law.

GRACE NOTES

Donna Baudendistel
Wendy Bell
Joanie Blessing
Mickey Clarke
Miriam de Jonge
Kayla Dippold
Charlotte Ellis
Ellen Fischbach
Colleen Gilmore
Melinda Guion Monroe
Loretta Haggard
Ami Hill
Mil Hood
Colin Keller
Susan King
Paul Listemann

Ann Luchterhand
Melanie Maesaka
Desy Maus
Sarah Moore
Carol Moreland
Hannah Phillips
Joshua Powlishta
Kimberly Powlishta
Jacinda Santora
Nancy Spargo
Sharon Spurlock
Diana Stuckey
Mary Anne Tolliver
Angel Walker-Myers
Pamela Yelton



BOARD OF DIRECTORS

President

Sharon Spurlock

Vice President

Kayla Dippold

Secretary

Open

Treasurer

Wendy Bell

BOARD MEMBERS-AT-LARGE

Mickey Clarke

Mil E. Hood

Miriam de Jonge

Richelle Perry

Zoey Fleisher

Jacinda Santora

WEBMASTER

Allison Benoit



WHO WE ARE

CHARIS is a diverse group of people united in our mission to perform music that celebrates and encourages women and the LGBTQ community.

MEMBERSHIP INFORMATION

CHARIS is a non-auditioned chorus that extends an open invitation for membership to all singers in the treble range.

Rehearsals are held on Tuesday nights from 7:00-9:30 p.m. at Peace UCC, 204 E. Lockwood Ave., Webster Groves.

If you're interested in membership or volunteer information or in attending a rehearsal, please visit our website at www.charischorus.org.

A NOTE FROM THE ARTISTIC DIRECTOR

Dear friends of CHARIS,

Take a moment, if you would, and think about what St. Louis sounds like to you. Is it the sound of a roaring crowd at Busch Stadium or Enterprise Center? The polished tones of the St. Louis Symphony Orchestra? The MetroLink rumbling across the tracks? The tapestry of songs that is the Festival of Nations in Tower Grove Park, or the hubbub of a Pride parade winding its way through the streets?

Despite our concert's title tonight, we know there's no one "St. Louis sound." There's a plethora of them, and they are as varied and beautiful as are the people that make our city the vibrant, fascinating place it is. This place thrums with music and art of all kinds.

In tonight's program, we celebrate the many facets of St. Louis Sound — songs written by St. Louis songwriters and composers, songs made famous by St. Louis performers, songs featuring poetry by St. Louis poets, and songs with St. Louis subject matter — from highways to trolleys and everything in between. We open with "Joy," which sets a fiery poem by St. Louis-born Sara Teasdale. The local connection to "St. Louis Blues" is no mystery — and it's a CHARIS favorite. "Run Away" is by yours truly — and I've been here in town for six years, and with CHARIS for five, so I'm working on my St. Louisan "cred." "Rescue Me" was made famous by St. Louis's Fontella Bass — and if you really wanted to, you could walk from your seat in the Concert Hall right over to "Route 66."

At the center of our program is "Kindness," a setting of a powerful poem by St. Louis-born poet Naomi Shihab Nye. (The backstory of "Kindness" is remarkable — you may wish to look it up!) And the best thing to do with that kindness is "Takin' It to the Streets," written by Doobie Brothers

A NOTE FROM THE ARTISTIC DIRECTOR

frontman and Ferguson native Michael McDonald. “The Trolley Song” is a favorite from Meet Me in St. Louis. If you’re a St. Louis transplant like me — or even if you’re STL born and raised — I expect there’s knowing laughter in your future when you hear us perform “I’m Not From Here,” another CHARIS favorite. “Light Out of Darkness” features astonishing poetry by Helen Keller, and was composed by Dr. Barbara Harbach, a Curators’ Distinguished Emerita Professor of Music at the University of Missouri–St. Louis. And finally, we celebrate that our city is home to, and thrives because of, “All Kinds of People,” with a song written by St. Louis’s own Sheryl Crow — and covered in a stirring rendition by Tina Turner, who began her performing career right here in St. Louis when she was a student at historic Sumner High School.

And, of course, if you’re a soprano or alto singer who wants to be part of CHARIS’s St. Louis sound, please come talk to us after the show. We love welcoming new voices into our merry band. And if you want to help us continue making our St. Louis sound, please consider making a one-time donation, joining our Grace Notes sustaining donor program, or lending a hand as a volunteer.

It is incredible to be making live music again, and we thank you for joining us to help this event happen. We hope tonight’s performance feels like a joyful stroll down that St. Louis Walk of Fame on Delmar. We hope it’s full of toe-tapping goodness and soul-feeding resonance. We’re glad you’re here, and we hope you hum your own St. Louis sound all the way home.

Onward,
Stuart Chapman Hill
Artistic Director

ST. LOUIS SOUND



SPECIAL ACKNOWLEDGMENTS

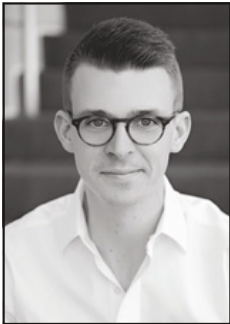
Conducting FellowMichaela Cruse
Principal AccompanistSusan Young
ASL InterpreterBecki Rhyne
Concert ProducerKayla Dippold
Box Office ManagerRichelle Perry
Program DesignJacinda Santora
Music LibrarianBridget White

PREMIERE SPONSORS

Missouri Arts Council
William A. Kerr Foundation

THANK YOU TO OUR MANY VOLUNTEERS!

ST. LOUIS SOUND



Dr. Stuart Chapman Hill, Artistic Director, is a teacher, composer, conductor, and scholar based in St. Louis, Missouri, where he serves as Assistant Professor of Music and Director of Music Education at Webster University. Stuart earned his Ph.D. in music education and choral conducting from Michigan State University and holds Master of Education and Bachelor of Music degrees from Vanderbilt University.

Susan Young, Accompanist, has been performing with CHARIS since 2001 in collaboration with Artistic Directors Merry Keller, Aric Henson, Kourtney Strade, Jeremiah Selvey, Claire Minnis, and now Stuart Chapman Hill. Nothing compares with the joy of live music, so Susan is thrilled to be back at the piano after the long intermission of 2020, with an audience other than her cat!



ST. LOUIS SOUND



Michaela Cruse serves as the conducting fellow for CHARIS, the St. Louis Women's Chorus, and has been singing in the choir since 2017. She currently teaches Vocal Music and Drama at Premier Charter School to the best middle school students around. In addition to classroom teaching, Michaela also teaches voice and piano lessons in her own studio. She would like to thank the CHARIS community for always being so supportive and giving her the opportunity to rediscover her passion for making music.

Becki Rhyne has been interpreting professionally since 2002 and truly enjoys interpreting professional theatre and concert performances in the metro St. Louis area. She's thrilled to be working with CHARIS again this season. In addition to her work as an interpreter, Becki works as adjunct faculty teaching future interpreters in Southwestern Illinois College's Interpreter Training Program. She's passionate about making the world more accessible to all, one interpreter at a time.



ST. LOUIS SOUND



SOPRANO 1

Donna Baudendistel
Anita Cleaver
Kayla Dippold
Chris Fox
Lisa Kastner
Adeline Liss
Sean Madkiff
Corinne Mason
Karen Phillips
Jessica Saigh
Leslie Shipman*
Madeline Webster
Bridget White

SOPRANO 2

Ellen Curry
Lionne Dinges
Colleen Gilmore
Loretta Haggard
Khat Kaye
Jenny Lynch

SOPRANO 2 (CONT'D)

Doris McCarter
Emma Miller
Erica Perlow
Kim Powlishta*
Lindsey Swaney
Lou Vinarcsik
Pam Yelton

ALTO 1

Debbie Char*
Michaela Cruse
Amanda Gilliom
Mina Gilliom
Melanie Luebbert
Mary Maxfield
Fiona Morales
Jocelyn Moylan
Rene Stone
Kristen Walker-Myers

ALTO 2

Nancy Belt
Lisa Bergman
Christina Brady
Sarah Dalton
Hannah Decker
Miriam de Jonge
Julie Glenn*
Elyse Mack
Sharon Opp
Jennifer Rooks
Gail Wiley

*section leader

ST. LOUIS SOUND

CHARIS, the St. Louis Women's Chorus presents
St. Louis Sound

May 15, 2022, 7:00p

Webster University Community Music School Concert Hall

Stuart Chapman Hill, artistic director

Michaela Cruse, conducting fellow

Susan Young, piano

Jacob Videmschek, guitar

Al Ludwig, bass

David Michelson, drums

Joy

Jocelyn Hagen

Michaela Cruse, conductor

Matthew Pickart, violin

St. Louis Blues

W.C. Handy
arr. Kirby Shaw

Run Away

Stuart Chapman Hill

Rescue Me

Carl Smith & Raynard Miner

Route 66

Bobby Troup
arr. Kirby Shaw

Michaela Cruse, conductor

Debbie Char, soloist

ST. LOUIS SOUND



Kindness

Christina Whitten Thomas
poem by Naomi Shihab Nye

Takin' It to the Streets

Michael McDonald
arr. Roger Emerson

Leslie Shipman, soloist

The Trolley Song

Hugh Martin & Ralph Blane
arr. Alan Billingsley

Michaela Cruse, conductor

I'm Not From Here

Melinda Monroe &
Wendy Bruner
arr. Neil Richardson

Wendy Bruner, guest vocalist

Light Out of Darkness

Barbara Harbach
text by Helen Keller

All Kinds of People

Sheryl Crow, Kevin Gilvery
& Eric Pressley
arr. Stuart Chapman Hill

Jenny Lynch, soloist

THANK YOU!

PEACE

UNITED CHURCH OF CHRIST



Following the God made known in the life and teachings of Jesus, we at Peace United Church of Christ gather as an Open and Affirming community to worship, learn, and serve:

- Welcoming all at Christ's/God's table
- Engaging children in worship
- Reaching beyond our walls to serve the community
- Hosting Children's Defense Fund Freedom Schools® summer program

Sunday service at 8:30am and 11:00am
Adult learning opportunities 9:45–10:45am

Our Values:

As a community, Peace United Church of Christ celebrates the values embodied in the ministry of Jesus:

Inclusiveness in our diversity,

Intentionality in our commitment to social justice,

Intimacy in our fellowship together,

Inspiration in our communal worship and

Inquisitiveness in our personal spiritual growth

204 E. Lockwood Ave.

Webster Groves, MO 63119

web: peaceuccstl.org

[facebook.com/peaceuccstl](https://www.facebook.com/peaceuccstl)

phone: 314-968-1727



A CHARIS FUNDRAISER

SWEET SPOT SHOWCASE

Join CHARIS for an afternoon of music & community and keep CHARIS singing out!

Featured Performers

Michaela Cruse, Mary Maxfield, Home Remedy,
Dr. Stuart Chapman Hill, and more!

Saturday, June 4th, 2022 // 4pm - 6pm
Webster Groves Garden Cafe
117 E Lockwood Ave, 63119

\$15 suggested minimum donation.
Visit charischorus.org for more information or
to purchase tickets in advance.

ST. LOUIS SOUND



WEBSTER UNIVERSITY

Community Music School Concert Hall
535 Garden Ave. | Webster Groves, MO 63119