

November 2004



**4301 Manchester Road
314-531-5317**

Dinner only, Wed - Sun, 5 till 11 pm
Reservations suggested

"Best New Restaurant 2003"
Sauce Magazine, July 2003

"Best New Restaurant 2003"
Riverfront Times, October 2003

**"...the atmosphere is nothing
short of magical."**
Joe Bonwich, Post Dispatch

A stack of four postcards is shown, fanned out. The top postcard features a drawing of the Eiffel Tower and the text "JOURNEYS OF THE HEART". The second postcard from the top says "Storms In Africa". The third postcard says "BOKIRIKO BUSSEI". The bottom postcard is the most prominent and contains the event information.

Savory, Sage, Rosemary and Thyme

Storms In Africa

BOKIRIKO BUSSEI

POSTCARDS:

**"Journeys
Of The
Heart"**

Wish you were here...

**NOV. 20, 2004
8pm
New City School
5209 Waterman**

Tickets: \$10

PRESENTED BY: **CHARIS**
The St Louis Women's Chorus

NOW IN OUR 12TH SEASON
www.charischorus.org or (314) 822-7580

THE NATIONAL ARTS COUNCIL OF THE UNITED STATES OF AMERICA

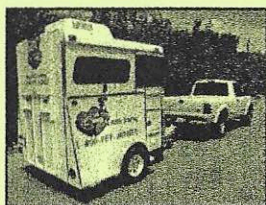
Arts Education

Mobile Pet Grooming

We Keep 'em Clean 'n Cute!

GRAND OPENING SPECIAL

WE COME TO YOU...



Luxurious 15-Step
Wash and Groom
with Heated Hydrobath

Less Stress on Your Pet
Less Hassle for You!

NOW IN YOUR NEIGHBORHOOD!

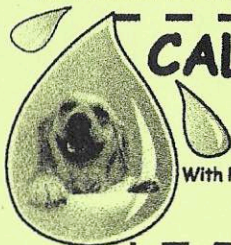
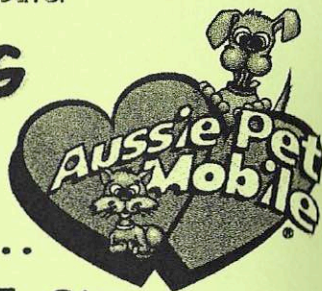
CALL 1-800-PET-MOBILE

\$5.00 Off

NEW CUSTOMER DISCOUNT

With Paid 15 Step Grooming Process. Applies to First Time Appt Only.
With Coupon Only.

www.aussiepetmobile.com



PRESIDENT'S MESSAGE

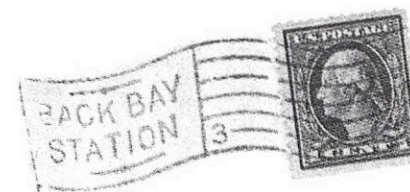
CHARIS, The St. Louis Women's Chorus has prospered once again. We were not certain of our future earlier this year when our Artistic Director, Merry Keller, resigned following our Spring Concert. We accomplished so much under Merry's direction that took us into our 10th anniversary season with a stunning guest appearance by Holly Near. It was the end of an era. How would we go forward?

Enthusiasm to continue was among us immediately. A Search Committee was formed and four worthy applicants were auditioned. Aric Henson, former director of the Gateway Men's Ensemble, was selected as our Interim Artistic Director. Aric was given a very brief sketch of our chosen theme and in a short few weeks had chosen the music and conceived the entire concert.

We were impressed. We think you will be too. This has been as musically challenging as we can remember. We have many new singers and our hope for the continuing health and growth of CHARIS is high.

Thank you for sharing this great evening of music with us.

Jane V. Clark, President





ARTISTIC DIRECTOR'S MESSAGE

Aric Henson



LOVE. The very word brings up a well of emotion from within each of us. For some, it is romantic. For others, it is a sentimental remembrance of a place we've left behind. It could also be a reminder of our own path towards self-love. These various reasons helped to shape this concert.

The World's Fair of 1904 has been a favorite topic this year. Themes of international identity led me to explore music from around the globe. Music of many styles, cultures and characteristics were selected. Another topic at the foreground of our minds was the disheartening passage of Amendment II. As a chorus whose objective is acceptance of all people, we felt a need to respond. The question became how to combine the themes of Love, Justice and global identity.

"Postcards: Journeys of the Heart" was the answer. Over the years, postcards have been used regularly to keep in touch as we travel. So, why not travel the globe through time in search of sharing themes of love? As I researched repertoire, I selected literature that explored themes which encompassed love of another, place, nature, movement, self, freedom and justice.

Whether lesbian, gay, transgendered, bisexual or straight, we all have memories, feelings and thoughts that cry out to be validated. Tonight's concert is our cry for understanding, acceptance, and above all -- LOVE!!! We hope that as you journey the globe with us you'll recall the many facets of love that have formed you. May that love move you to embrace a place of love, hope and justice for us all.

Whoever you are, whatever your sexual orientation, please know that CHARIS -- The St. Louis Women's Chorus -- sends this "Postcard" to you!

Looking For A Mortgage?

Relax, you've found First Horizon Home Loans® and Kelly Alcorn.

Kelly offers:

- Free pre-qualifications and fast approvals
- Local underwriting and processing
- FHA, VA and Conventional financing
- No and low down payment programs
- No mortgage insurance options
- Online applications

Call Kelly today and get home with less stressSM!



Kelly Alcorn

11775 Borman Dr., Suite 340

St. Louis, MO 63146

Phone: 314-322-8322

E-mail: kalcorn@firsthorizon.com

Apply online: www.KellyAlcorn.com



All loans subject to approval. Certain restrictions may apply. © 2004 First Horizon Home Loan Corporation.



ARTISTIC DIRECTOR - Aric Henson

Aric Henson received his musical training at Jefferson College and The University of Missouri, St. Louis. He previously served as director of the GMC Ensemble, Associate Director of the St. Louis Symphony Children's Choir and music director of Faith UMC. He is also a former adjunct faculty member with Jefferson College, where he led the Jefferson College Singers, the Starlight Show Choir and taught private vocal lessons. He has also taught in public and private school settings. Aric also serves as guest conductor and adjudicator for various music festivals. Currently he is on staff at Woodlawn Chapel Presbyterian Church, where he directs The Adult Hand Bell Choir and the Chancel Choir. He also runs a private voice studio in the St. Louis area.

Henson's life revolves around music. He loves to teach and perform and that love has taken him on tours in cities such as Prague, Vienna, Salzburg, Munich, New Orleans, Little Rock, San Antonio, Dallas and Austin. Aric holds affiliations with such distinguished music organizations as Music Educators National Conference, Missouri Music Educators Association, American Choral Director's Association and The Missouri Choral Director's Association.

Aric would like to thank the members of CHARIS for their hard work and determination. Thanks also to Scott for his amazing LOVE.



Gail B. Doell, O.D.

WEBSTER EYE CARE

7954 Big Bend Blvd.
Webster Groves, MO 63119
Fax 314.962.3028
www.optometrists.org/webstereyecare

Tel. 314.962.7580

Hours: M: 9-7, T&Th: 9-6, W&F: 9-5, Sat: 9-1



Joy Allen
LCSW, M. DIV.

INDIVIDUAL, COUPLE & FAMILY COUNSELING

758 Chamberlain Place, Suite 103, St. Louis, MO 63119 314.918-1003

SCHUCHAT, COOK & WERNER

ATTORNEYS AT LAW

**SERVING LABOR UNIONS AND THEIR MEMBERS
FOR OVER 50 YEARS**

LORETTA K. HAGGARD
ATTORNEY AT LAW
(314) 621-2626

THE SHELL BUILDING
1221 LOCUST ST., 2ND FL.
ST. LOUIS, MO 63103

*CHARIS, The St. Louis Women's Chorus
A Herstory*

CHARIS was the realization of the dream of its founders Cindy Sohn and Juliet Jackson. With the guidance and support of the Gateway Men's Chorus (GMC), they organized the Committee to Unite Women Singers in the fall of 1992, with the goal of creating a chorus open to all women, regardless of cultural background or musical experience. CHARIS has always been a non-auditioned chorus.

Twenty-five women attended the first meeting of the chorus held in January, 1993. An acting Board of Directors was appointed at that time to organize and direct the activities of the chorus. CHARIS was granted status as a not-for-profit organization by the State of Missouri on September 27, 1993, and received confirmation of its tax-exempt status as a 501c(3) corporation in July, 1994.

The chorus made its first public appearance on May 23, 1993, at Trinity Episcopal Church in a fund-raiser to benefit Northside AIDS Outreach. Shortly thereafter CHARIS took the stage with The Gateway Men's Chorus to perform at the latter's Pride Concert in 1993. CHARIS made its solo debut in October, 1993, and has subsequently produced two to three solo performances along with community benefits each year.

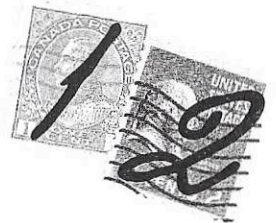
Chorus highlights include a performance at the "Notes From Home" series at the Sheldon Memorial on January 24, 1995, at which time the chorus recorded "Dream In Color," its first commercially released tape. CHARIS hosted and performed at the 1995 Gay and Lesbian Association of Choruses (GALA) Leadership Conference for delegates from around the U.S. and a number of foreign countries.

In 1996 CHARIS proudly performed in Tampa, Florida at GALA Festival V. Our performances have benefitted the Cathedral Mission Society, The Names Project, Metropolitan Food Pantry Association, Habitat for Humanity, and Parents, Families and Friends of Lesbians and Gays (PFLAG).

Merry Keller came to CHARIS as Interim Director in 1999. Merry's exceptional leadership skills and strong background in music both as a performer and teacher provided valuable assets to the chorus. Merry accepted the position of Artistic Director in January, 2000. Many wonderful concerts ensued under her direction. Highlights include "Sing for the Cure," a concert benefitting the Susan G. Komen Breast Cancer Foundation in June, 2001 and our tenth anniversary concert, "A Decade of Song," featuring special guest artist Holly Near.

Another era in CHARIS' herstory began with Merry Keller's resignation as Artistic Director at the end of our eleventh season. Aric Henson, former director of the Gateway Men's Ensemble, was hired as Interim Artistic Director for the fall concert, "Postcards: Journeys of the Heart," which will be performed on November 20, 2004 at the New City School. Following this performance a search for a permanent Artistic Director will be launched. It is expected that this new director will be hired in time for our spring concert scheduled for late April, 2005.

With a talented board of both singers and non-singers addressing management issues, the chorus is looking forward to sharing its voices and vision with its audiences for many years to come.





SIGN LANGUAGE ARTIST - Glenace Humphrey

Glenace has interpreted for CHARIS since it was founded in 1993, and marks her 28th year as an interpreter in 2004. She is a staff interpreter for Deaf Inter-Link as well as a freelance//community interpreter. Glenace is in her third season working hand in hand with Charlie Robin, Managing Director of the Edison Theatre at Washington University. In January, 2004, she had the pleasure of interpreting there for Kate Clinton. Glenace holds national certification from the Registry of Interpreters for the Deaf (RID). She currently holds the position of RID Region IV Representative, which represents 14 states and three provinces in Canada. She has interpreted in many places in the U.S. and also in Japan and Europe.

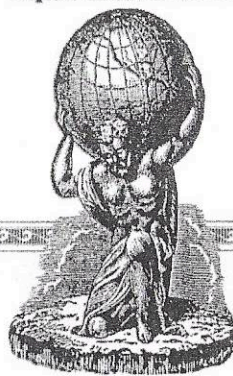
Glenace has attended the GALA choral festivals since 1989. Her initiation to GALA was in Seattle interpreting for the Denver Women's Chorus. Later festivals took her to Denver, Tampa, San Jose and most recently to Montreal with the Gateway Men's Chorus. She has interpreted for Bruce Villanche, John Kerry, Maya Angelou, Nell Carter and President George W. Bush. Jeffrey Maynard and the New York City gay Men's Chorus invited Glenace to perform with them in Carnegie Hall in December of 2001 and in June of 2002 with Armistead Maupin. She recently had the honor of interpreting for Ann Hampton Callaway at the Pageant, and Stephen Schwartz, Liz Callaway and Scott Coulter at the Edison Theatre at Washington University. Glenace loves sharing the poetry, inspiration and laughter of music through sign language with the deaf and hearing communities.



ACCOMPANIST - Susan McIntosh

Susan has been making music for many years, with her voice and on the piano. She has accompanied soloists and small ensembles in the St. Louis area, and is now proud to be in her second season as the principal accompanist for CHARIS. She also enjoys singing with her three girls and plans to make beautiful music for many years with her partner, Dayna Deck.

Atlas Restaurant



5513 PERSHING • ST. LOUIS, MO 63112

DINNER • TUE-SAT • 5:30 TO 10:00
DESSERTS • FRI-SAT • 10:00 TO MIDNIGHT



WHO WE ARE

CHARIS is a lesbian chorus open to all women. We differ in age, size, ethnic background, sexual orientation and abilities but we share a goal to seek musical excellence, voice messages of social justice, and create a fun and supportive place for all women. We are a non-auditioned chorus.

MEMBERSHIP INFORMATION

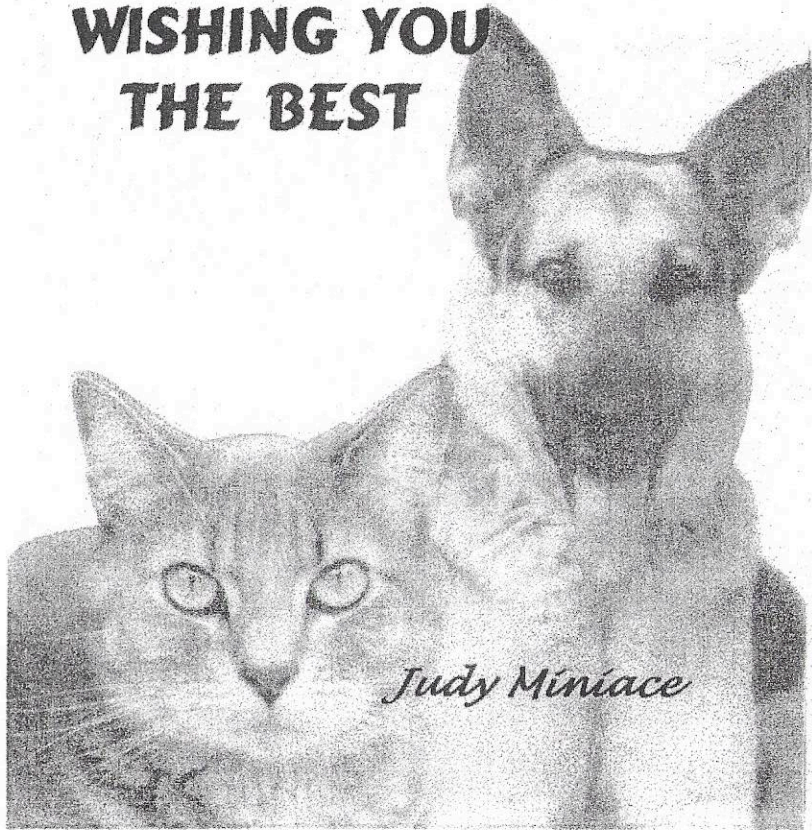
CHARIS extends an open invitation for membership. Rehearsals are currently held Tuesday nights from 7 to 9:30 at Immanuel United Church of Christ, 3460 Jamieson Ave. If you are interested in membership information or attending a rehearsal, please call (314) 852-5318.

BOARD OF DIRECTORS

JaneV. Clark, President
Colleen Gilmore, Vice President
(*) Marilyn Stavenger, Recording Secretary
Kathy Duncan, Treasurer
Sharon Smith, Corresponding Secretary
Candice Freeman
Kim Powlishta
Chatanunya Rawles
Pat Henry
Linda Clark
(*) Bill Byrd
(*) Katrina Pfeiffer
(*) Julianne Smutz

(*) Non-singing directors

**HERE'S LOOKIN' AT YOU
CHARIS
AND
WISHING YOU
THE BEST**



Judy Miniace

The Church that Welcomes you!
immanuel@immanuelwelcomesyou.org



Charis,
Just a quick postcard from
our heart!
Best of luck in your 2004-
2005 Season! Keep up the
great work!

Love,
Immanuel

Immanuel Congregational Church is the proud home of
Charis-The Saint Louis Women's Chorus!

Charis
c/o Immanuel UCC
3460 Jamieson Ave
St. Louis, MO 63139



David J. Prelutsky, M.D.
Internal Medicine

Catherine Williamson, F.N.P.
Nurse Practitioner

Khaled Dardari, M.D.
Internal Medicine

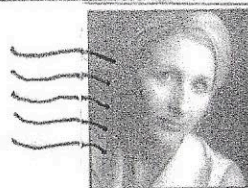


2340 Hampton Avenue
St. Louis, Missouri 63139
(314) 647-2200

Now Accepting New Patients

Every journey begins
from home,
The place you return to
after you roam.
As you travel in song,
both near and far,
I applaud you, CHARIS,
for all that you are.

Janel Montgomery
Real Estate Consultant



POST CARD

KELLER WILLIAMS
REALTY

Office: (314) 966-4700
Mobile: (314) 603-0154
HM Fax: (314) 843-2449
Office Fax: (314) 966-4715
Email: janel@kw.com



10805 Sunset Office Dr., Suite 102
Sunset Hills, MO 63127
AN INDEPENDENT MEMBER BROKER

Corporate Seasonings

(314) 993-7100 • Fax (314) 993-7030

Best Choice in Business Catering
Box Lunches • Continental Breakfast
Hot & Cold Buffets

Call us for your Business Catering needs!

Sally Fitzhugh & Lesley Proud
Owners & Managers

THE HEIGHTS

Piano Bar & Restaurant

Now Serving Food!

Dinner Monday-Sunday 4-9pm

Seven Daily Lunch Specials for \$7.00 11am-2pm

\$7.95 Saturday & Sunday Brunch 10am-2pm

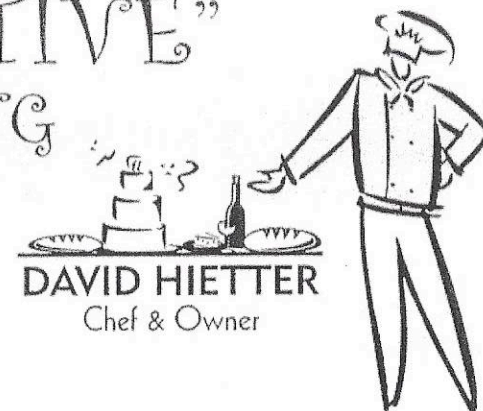
Monday-Friday 11am-1:30am • Saturday 10am-1:30am • Sunday 10am-12 Midnight
LIVE MUSIC 7 NIGHTS A WEEK • HAPPY HOUR MONDAY-FRIDAY

2280 South Jefferson (at Shenandoah) St. Louis, Missouri
314.772.9500 • www.heights-bar.com



Thurs 9pm-Midnight
Open Mike Night
Bring Your Music!

"CREATIVE" CATERING



DAVID HIETTER
Chef & Owner

Phone or Fax
(314) 434-1050

off we go

**"POSTCARDS:
JOURNEYS OF THE HEART"**

November 20, 2004

8:00 PM

New City School

Interim Artistic Director: Aric Henson

Accompanist: Susan McIntosh

Sign Language Artist: Glenace Humphrey



PART I

1. Love Eyes Medley

Arr. by David Wright

Featuring: Felicia Scott, Colleen Gilmore, Loretta Haggard, Dina Young, Jane Clark, Sharon Spurlock

2. Meet Me in St. Louis

Arr. by Jeff Girard

3. Storms in Africa

Arr. by Steve Milloy

4. O Shenendoah

Arr. by Ruth Elaine Schram

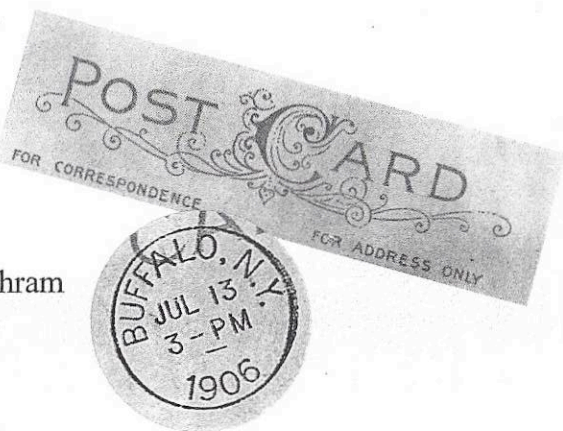
Loretta Haggard, flute

5. This We Know

Words by Chief Seattle

Music by Ron Jeffries

Featuring: Pat Henry, Jane Clark, Linda Clark, Kathy Duncan, Loretta Haggard, Colleen Gilmore, Sharon Smith, Nadine Varner, Kim Powlishta, Sharon Opp, Dina Young, Nancy Phillips, Sharon Spurlock



6. Lift the Wings

Bill Whelan

Dina Young, Jane Clark, soloists

7. Kokiro Bushi

Arr. by Wendy Stuart

8. Li'l Liza Jane/ Polly Wolly Doodle

Music and Lyrics by Berta and Sonja Poorman



PART II

9. Nigra Sum

Pablo Casals

Featuring: Jane Clark, Kris'ten Wozniak, Sonja Furiya, Alma Belfield, Colleen Gilmore, Georgia Johnston, Sharon Spurlock, Pat Henry, Sharon Opp, Jayme Christensen, Sharon Smith, Loretta Haggard, Nadine Varner, KH, Kathy Duncan

10. Fire, Fire

Thomas Morley

Arr. by Russell Robinson

Featuring: Felicia Scott, Jane Clark, Kris'ten Wozniak, Sonja Furiya, Dina Young, Sharon Spurlock

11. I Love How You Love Me

Arr. by Alan Billingsley

Georgia Johnston, soloist

12. Savory, Sage, Rosemary and Thyme

Arr. by Donald Patriquin

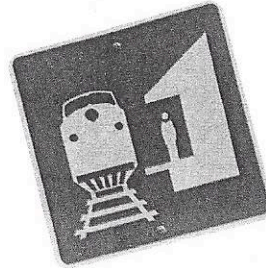
WISH YOU WERE HERE



13. **My Love Walks in Velvet**
Gwyneth Walker
Pat Henry, Kris'ten Wozniak, soloists

14. **Hatikva**
Traditional Hebrew Melody
Arr. by John Leavitt

15. **Singing For Our Lives**
Holly Near
Arr. by Ruth Huber



Please join us in singing this last song!

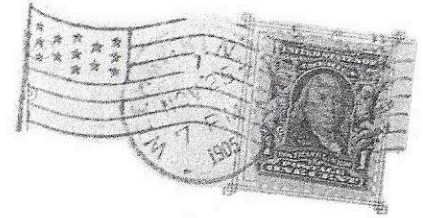
*We are a gentle, angry people,
and we are singing, singing for our lives....*

We are a justice seeking people....

We are a land of many colors....

We are gay and straight together....

We are a freedom loving people..



CHARIS The St. Louis Women's Chorus

Aric Henson, Interim Artistic Director
Susan McIntosh, Accompanist
Glenace Humphrey, Sign Language Artist

SOPRANOS

Jane Clark
Kathy Duncan
Sonja Sanae Furiya
Pat Henry
K. H.
Felicia Scott

Linda Clark
Penny Frame
Colleen Gilmore
Loretta Haggard
Julie Lynch
Kris'ten Wozniak

ALTOS

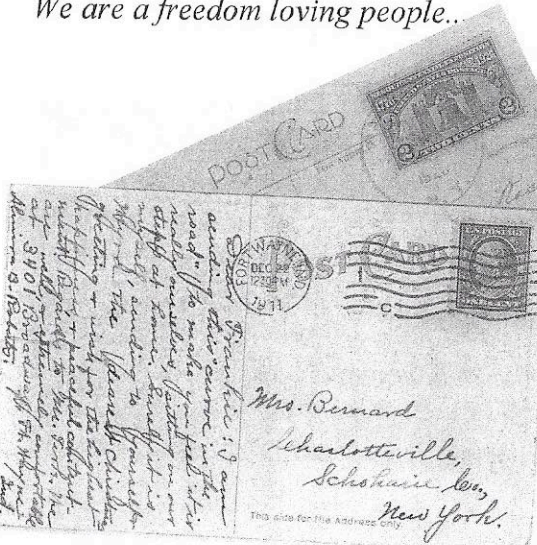
Alma Belfield
Candice Freeman
Pat Moran
Nancy Phillips
Lesley Proud
Susanna Roe
Sharon Spurlock
Dina Young

Jayne Christenson
Georgia Johnston
Sharon Opp
Kim Powlishta
Michelle Roberts
Sharon Smith
Nadine Varner
Salicia Black

CHARIS concerts are interpreted
for the Deaf/HH



Interpreted for the Deaf





JOAN M. BRACKMANN, M.A.
 LICENSED PROFESSIONAL COUNSELOR
 EMDR

INDIVIDUALS COUPLES **PSYCHOTHERAPY**
 NATIONALLY CERTIFIED PSYCHOLOGIST


314.664.9766
 36726 ARSENAL STREET, SAINT LOUIS, MISSOURI 63116

CHAMBER JAZZ

Patrick Welch
 314-961-0255

Stephen A. Brammeier, D.V.M.
Kim Lynch, D.V.M., C.V.A.

- Internal Medicine
- Acupuncture
- Dermatology
- Dentistry
- Grooming
- Behavior Consultation



Web Site: www.kah.com



CW
CENTRAL WEST END BANK
 A Federal Savings Bank

Celebrating 25 Years
1979-2004

WWW.CWE-BANK.COM

10 Maryland Plaza
 (314) 367-8333

415 DeBaliviere
 (314) 367-8800

FDIC
 Insured

Office 314-454-1900
Fax 314-454-1925

Serving the community with courtesy, compassion and confidentiality.



CentralWest

HEALTH CARE

David A. Parks, M.D.

Internal Medicine

Tori Renee McGrath, PA-C
Internal Medicine

Lots'n lots of good wishes to President Jane,

Artistic Director Ann,

and all of Charis.

Ken Curtis



FRIENDS OF CHARIS

We would like to thank the following people for gifts
(Including in-kind donations) and general support made
during the past twelve months

Garage Sale

Karen Cook & Terry Heady

Barbara Shirley

Jane Levdansky and Joan Lafferty

Odie Kirchmeyer

Edith Fram

StellarRAD Systems

Lisa Miller

Sherrie Absher

Sally Nelson

Joan Powlishta

Darlene Dougherty

Sharman Burke

Mildred Mueller

Edith McDonald

S. Paige Canfield

Beth Dockery

Monica Buehrle

Pasta Extravaganza

Kris'ten Wozniak, Chair

Corporate Seasonings

Creative Catering - Chef David Hieter

Wired Women

St. Louis Repertory Theatre

Colleen Moore

Sharon Opp

Kim Castro

Mary Engelbreit

General Contributors

Jane Clark

Linda Clark, Concert Venue

Martha Ficklen and Nanora Sweet,

- In honor of Marta Nichols, poet

Set Building for concert:

Lloyd Humphrey

Sharon Smith

Kim Powlishta

Georgia Johnston

Kendra Henry

Michelle Roberts

Pat Henry

Nancy Phillips

Alma Belfield

Since 1910

FRD
FOX RIVER DAIRY

DANIEL R. PROBST

1754 Chase Drive
Fenton, MO 63026

Direct Line 314/346-3976

Office 636/343-5110

Fax 636/343-4253

The FINEST Cheeses & Specialty Foods

KaBloom
The power of fresh flowers.

3101 South Grand Boulevard
St. Louis, MO 63118

Gary Lee
Designer

Tel: 314.664.4800

Fax: 314.664.4807

StLouisMO@KaBloom.com

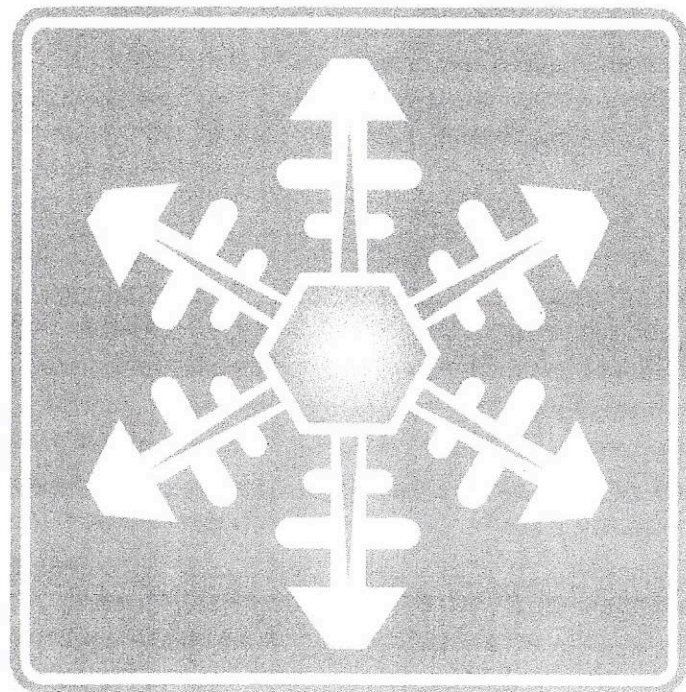
MADOSKY
CHIROPRACTIC

& Acupuncture Center

2175 Big Bend • Richmond Heights, Missouri 63117

Dr. William F. Madosky

(314) 645-8805



Band Together Holiday Concert

Saturday, December 18, 2004 · 8 p.m.

E. Desmond Lee Concert Hall at Community Music School of Webster University
560 Trinity Avenue at the western end of the University City Loop

ADMISSION ALWAYS FREE

www.bandtogetherstl.com

The Leslie Maclean Trio

Announces the Release of Their New CD

That's Time Enough



If you missed their recent CD release concert at the Bistro, attended by more than 100 guests, you can still hear the great jazz music included in this new album. This CD includes the full Wizard of Oz Medley, **TO OZ? TO OZ!**

"The Leslie Maclean Trio is a wonderful band of talented musicians..." James Oerding, West End Word, Oct. 20-26, 2004

"Maclean is truly talented. I highly recommend this CD to anyone who enjoys jazz piano. -Kathy Feist Vescovi, October/November 2004 Issue, JAM Magazine, Kansas City

The CD is now available at Webster Records. For more information visit www.lesliemacleantrio.com, or call 636-405-3064.

© 2004 LMT Enterprises, LLC

Psychotherapy ▼ Supervision ▼ Workshops

**Maxine Birdsong, LCSW
Gary L. Hirshberg, LCSW
Valorie M. Adrio, LMFT, ATR**

(314) 367-2010

*Serving lesbians, gay men, bisexuals
and people affected by HIV*

ACKNOWLEDGMENTS

CHARIS gratefully acknowledges the help of the following persons in the preparation of this concert, as well as the generosity of the Regional Arts Council.

Concert Coordinator: Candice Freeman

Publicity: Jane Clark, Georgia Johnston

Program Book: Linda Clark & Katrina Pfeiffer

Production:

Stage Manager: Mike Eppenberger

Costumes: Pat Henry

Lighting: Dustin Lilly

Set Design: Renee Dix

Choreography: Sonja Sanae Furiya

Volunteers: Julianne Smutz

Katrina Pfeiffer, Bill Byrd, Chad Johnson

Kendra Henry, Mia Ulmer, Marilyn Stavenger,

Chay Rawles, Nancy Folk, Joy Ovington

Monologue Writers:

Linda Clark

Kim Powlishta

Candice Freeman

Sharon Smith

Monologue Readers

Linda Clark

Sharon Smith

Felicia Scott

Pat Moran

Lesley Pride

Georgia Johnston

Sonja Sanae Furiya

"Postal Carriers"

Jim Lott

Franklin McCallie

Merry Keller

Joan Lipkin

Steve Schneider

Ken Curtis

Dancers For "Li'l Liza Jane"

L. Pry

M. Kveton



PERSONAL AND BUSINESS LEGAL COUNSEL

Arlene Zarembka

Attorney at Law

Since 1974

Wills • Trusts • Powers of Attorney • Estate Planning
Medicaid-Planning • Probate • Real Estate
Accidents • Personal Injury • Workers' Compensation
Disability Claims • Security Clearances • Small Business

Wheelchair Accessible

225 So. MERAMEC #210, CLAYTON, MO 63105 PHONE: (314) 726-6355



...Join the Fun

We are a fast growing group of lesbians from the St. Louis Metro Area that enjoy a variety of social activities such as movies, potlucks, camping, meeting for coffee, online chats, bike rides, book club, picnics, hikes & more. All ages welcome.

We keep in touch & organize events through our Yahoo Group.

For more information, email:
KellySTLouis2004@yahoo.com

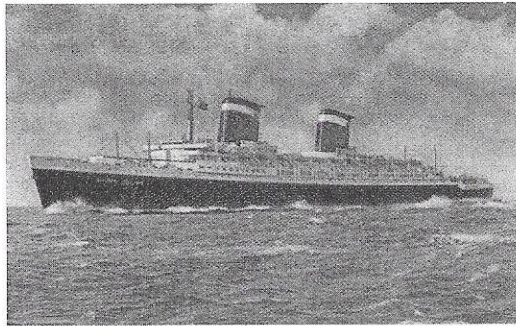
Thank you
for helping
us open
doors for
people
living with
HIV/AIDS.



Doorways

an interfaith AIDS residence program

4385 Maryland Avenue Saint Louis, MO 63108
(314) 535-1919 www.doorwayshousing.org



bon voyage



UPCOMING EVENTS

- Nov. 30 Dining Out For Life - Community Event
- Dec. 1 World AIDS Program: "Women and AIDS." 7pm - Millennium Student Center, UMSL. CHARIS to sing.
- Dec. 17-18 Gateway Men's winter concert.
- Dec. 21 CHARIS Christmas Party - Eden Seminary. 6pm.

* * * * *

BE LOOKING...

CHARIS SPRING CONCERT

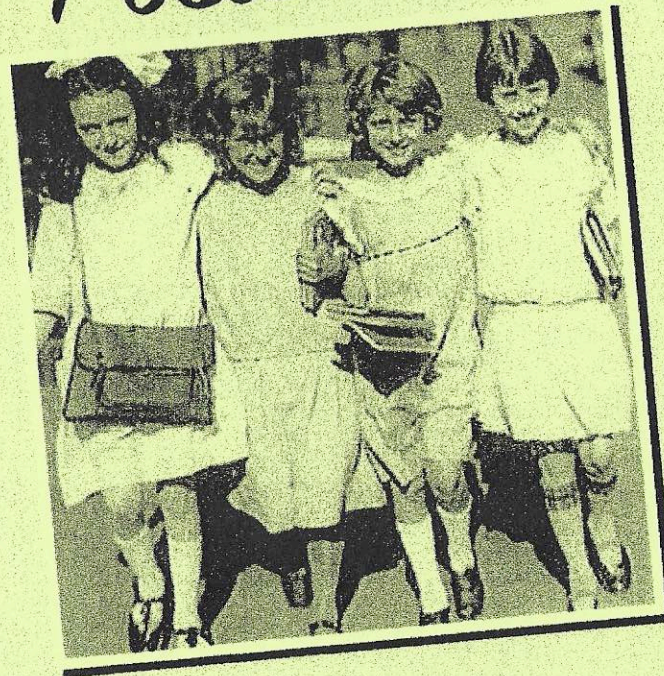
April, 2005

* * * * *

NOTES



Postcards



Informing, Educating and Entertaining the Gay, Lesbian, Bisexual and Transgendered Community throughout St. Louis and Southern Illinois.

PROVIDING A VOICE FOR YOU
Vital VOICE
NEWSPAPER

WWW.THEVITALVOICE.COM • 314-865-3787

Proud to Support CHARIS